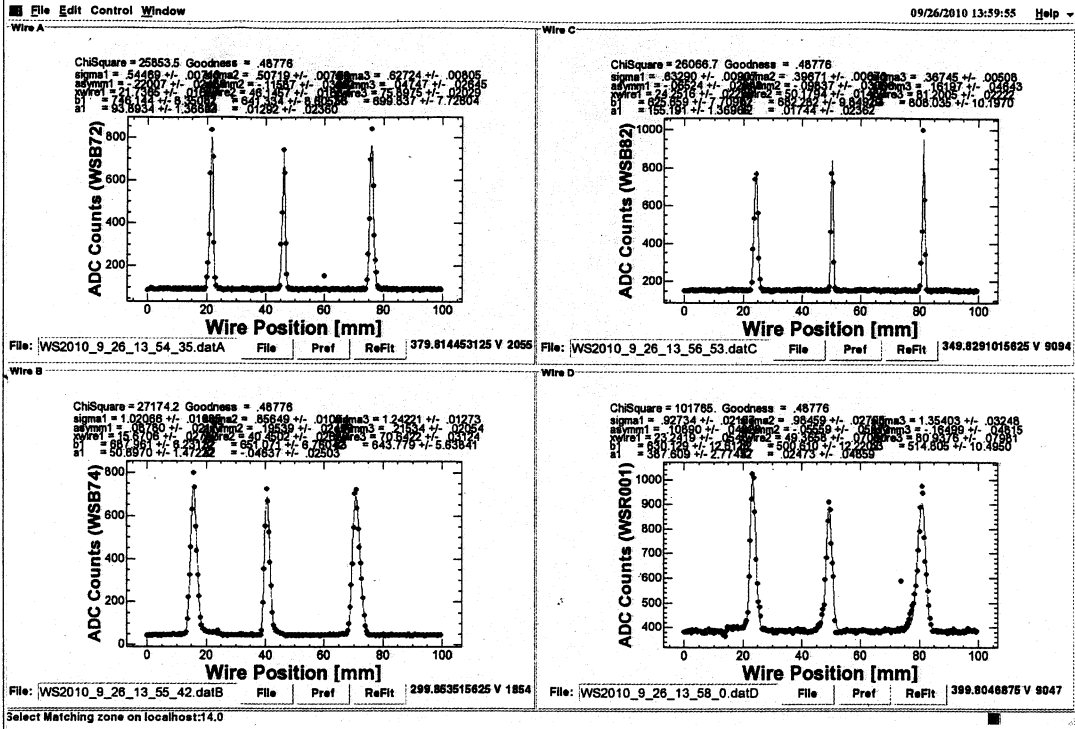
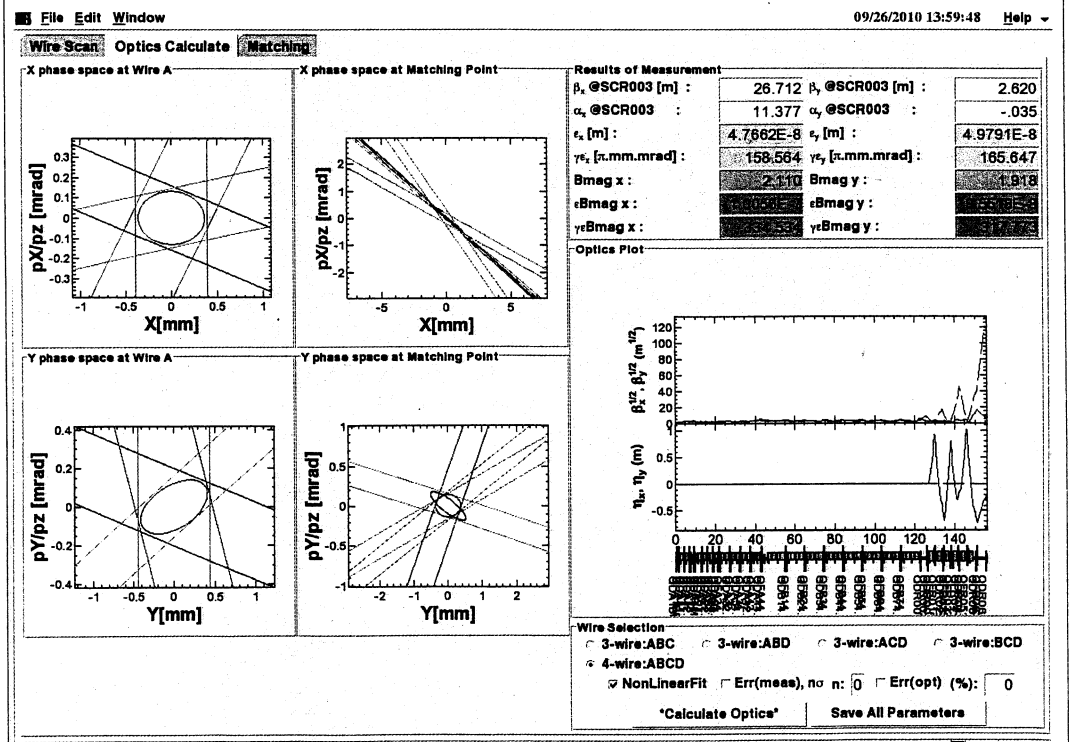


Wire
Scanner
BE79-
5Hz

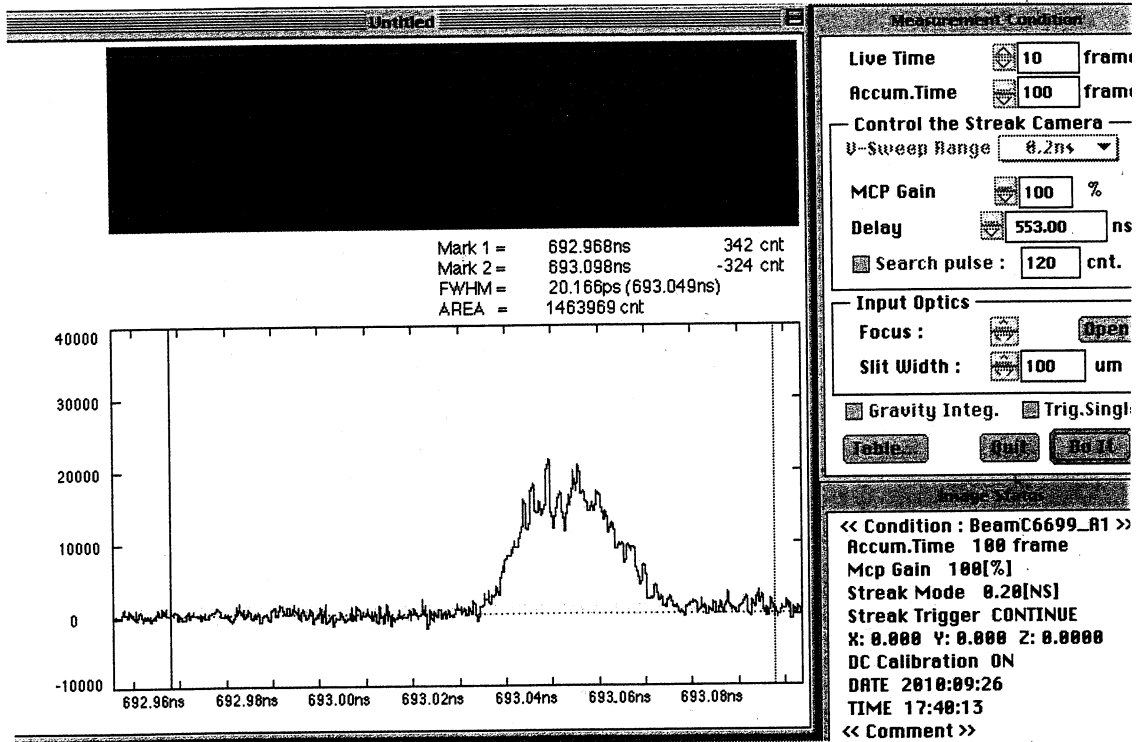
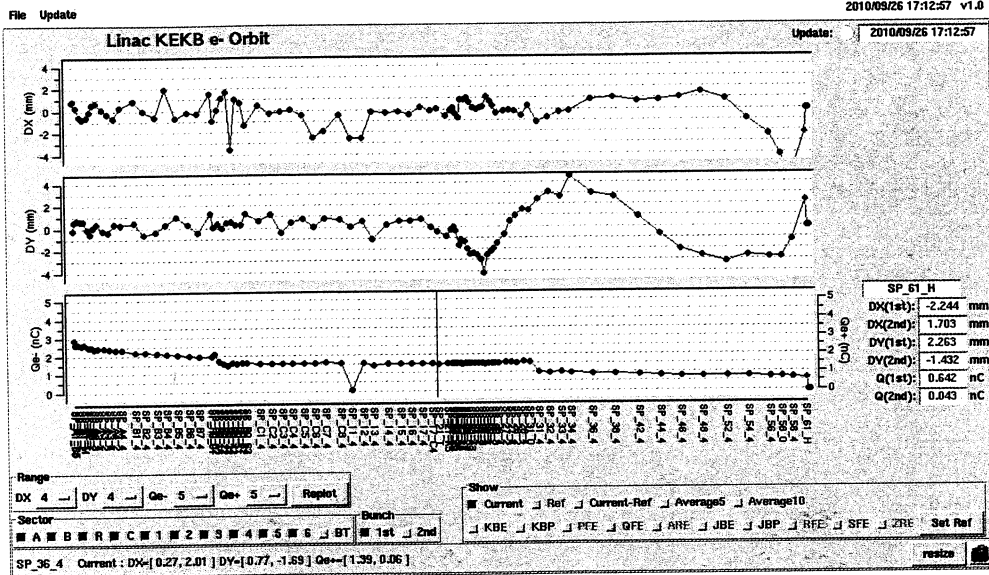


Select Matching zone on localhost:14.0

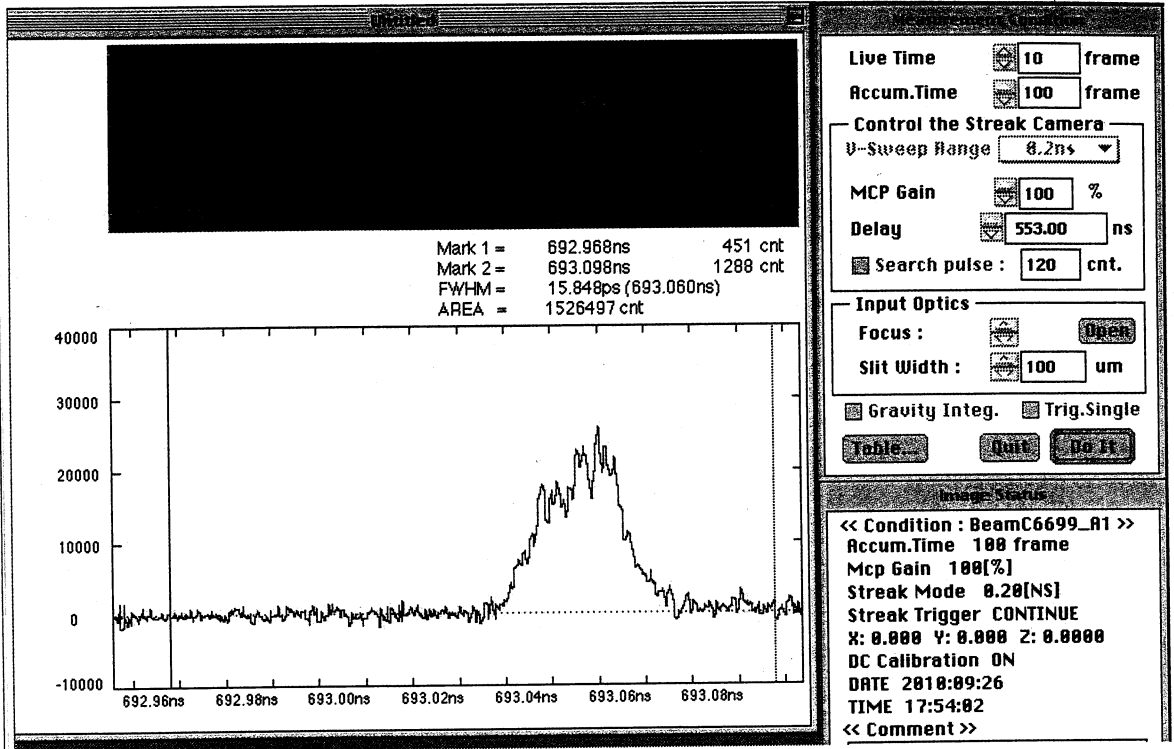


2010.9.26
17:00

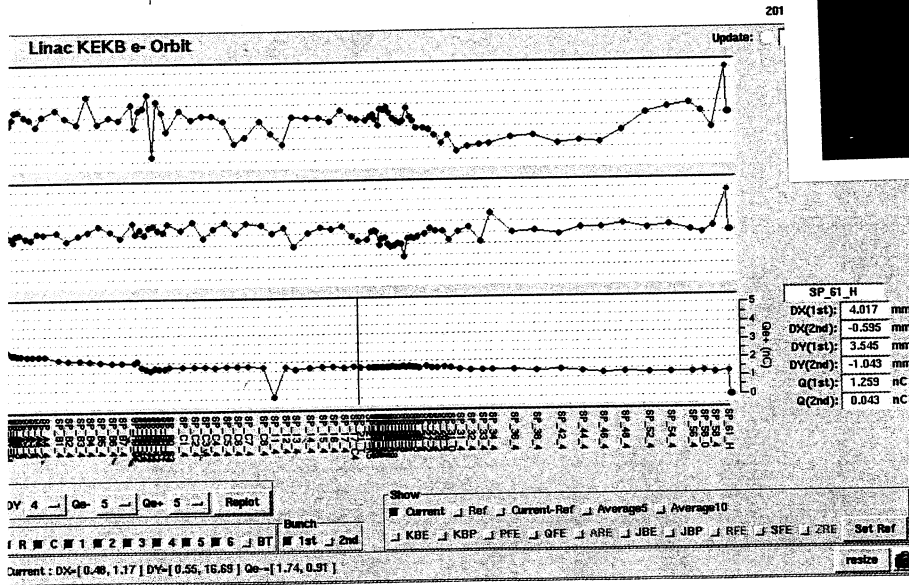
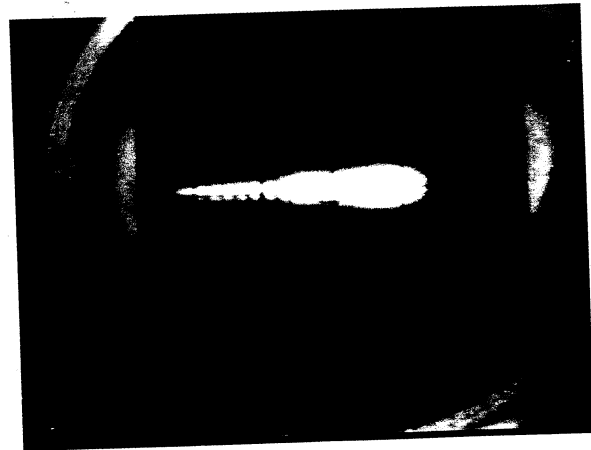
PF-RING 入射後, BT= data4982.all quickload,
状態再現セリ。(バ=4長 16PS → 20PS)



SH-A1-S/ Amplitude 30.0% → 32.0%
 (power: 5.17 → 5.72)
 バンク 20 pps → 16 pps (14:00 ~ 17:00)

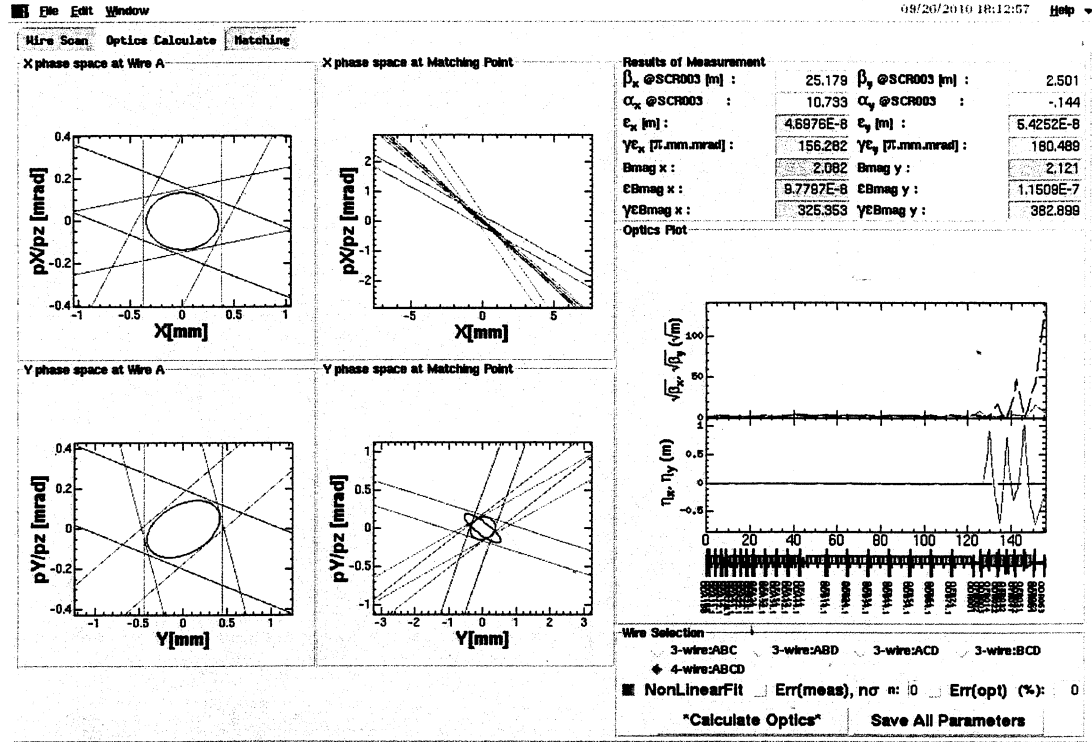
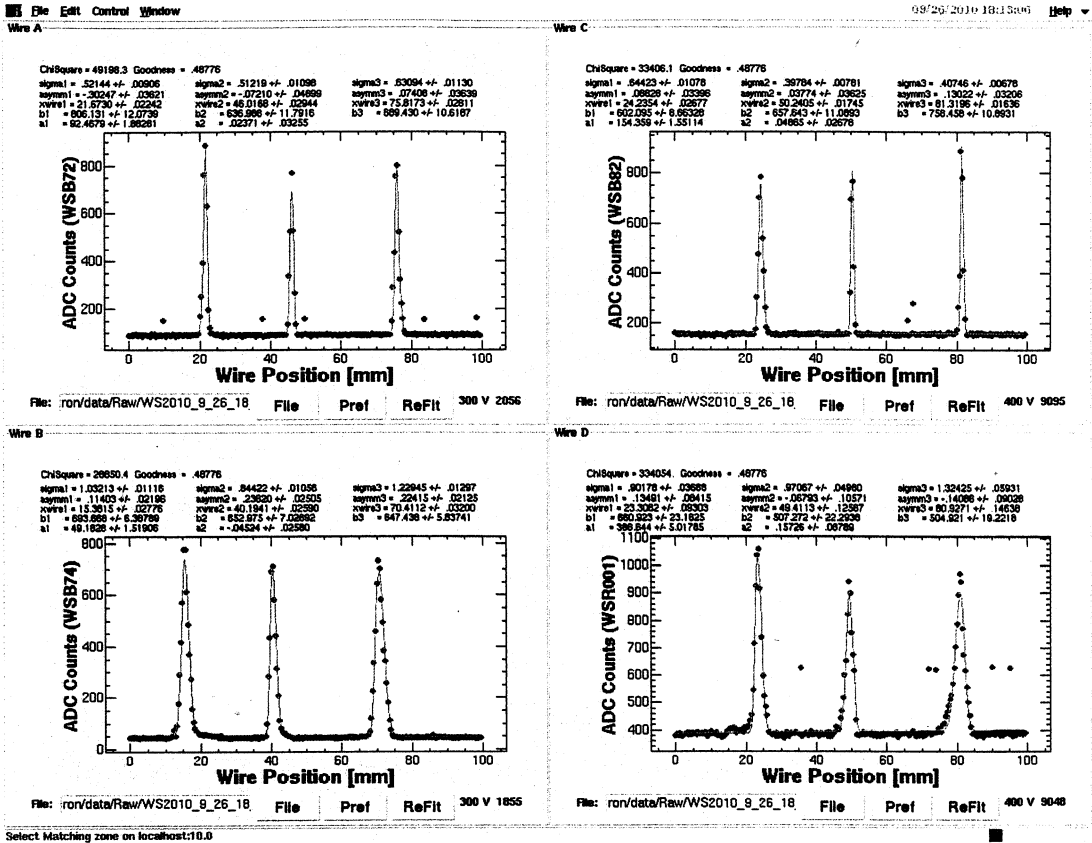


BY-17-C5 -0.630 A → -0.600 A



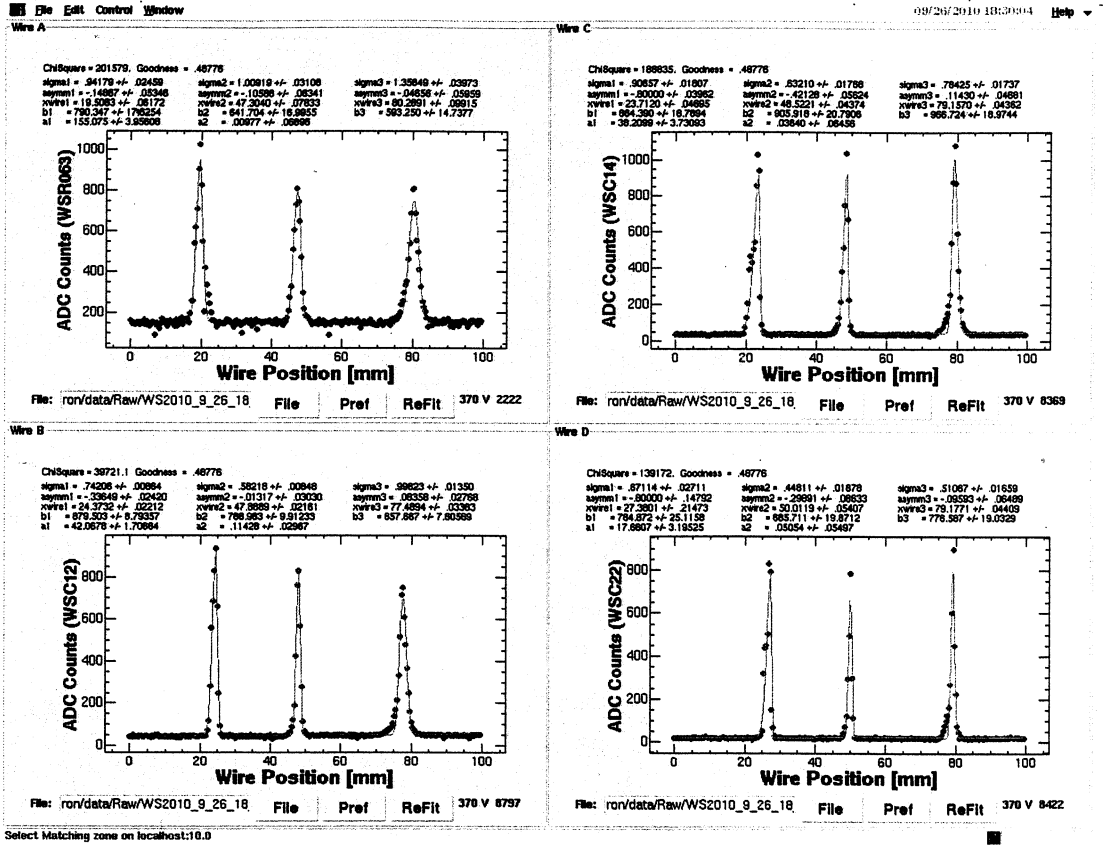
S.C-P0-31

Wire
Scanner
B079 -
54Z

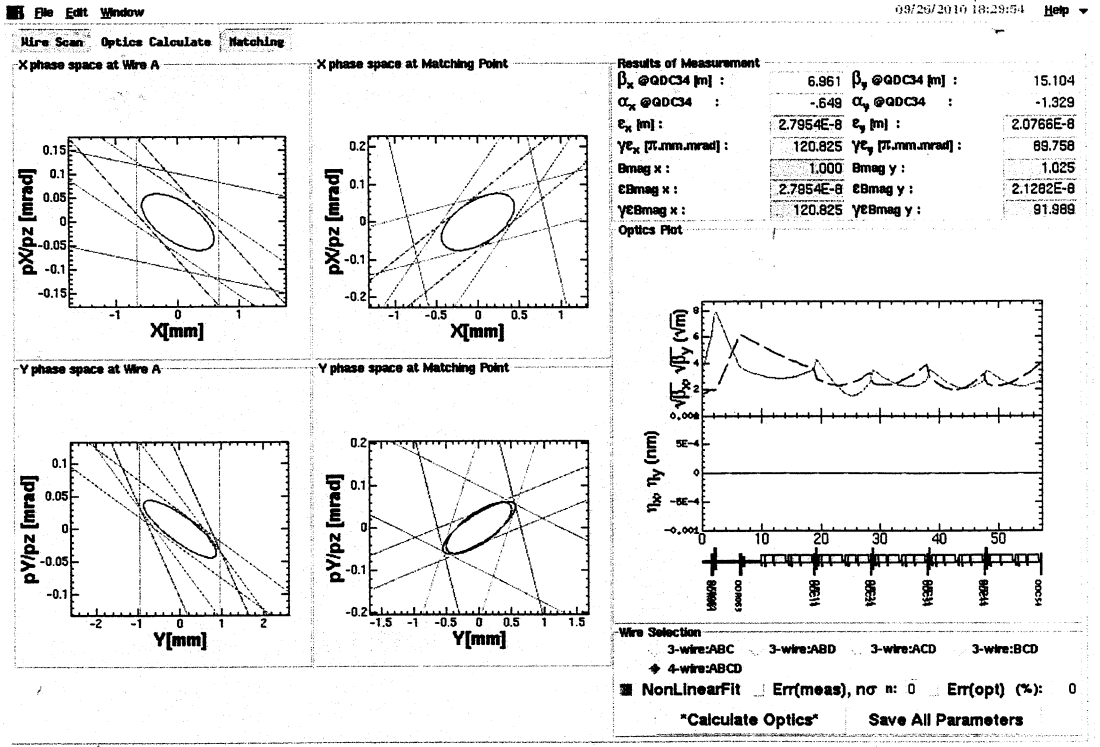


Omeg values were SAVED to /data1/KEKB/Wire/LINAC/sectorB/electron/data/Gvalue/prime_2010_9_26_18_11_54.dat0

Wire
Scanner
CE 74-
5 Hz

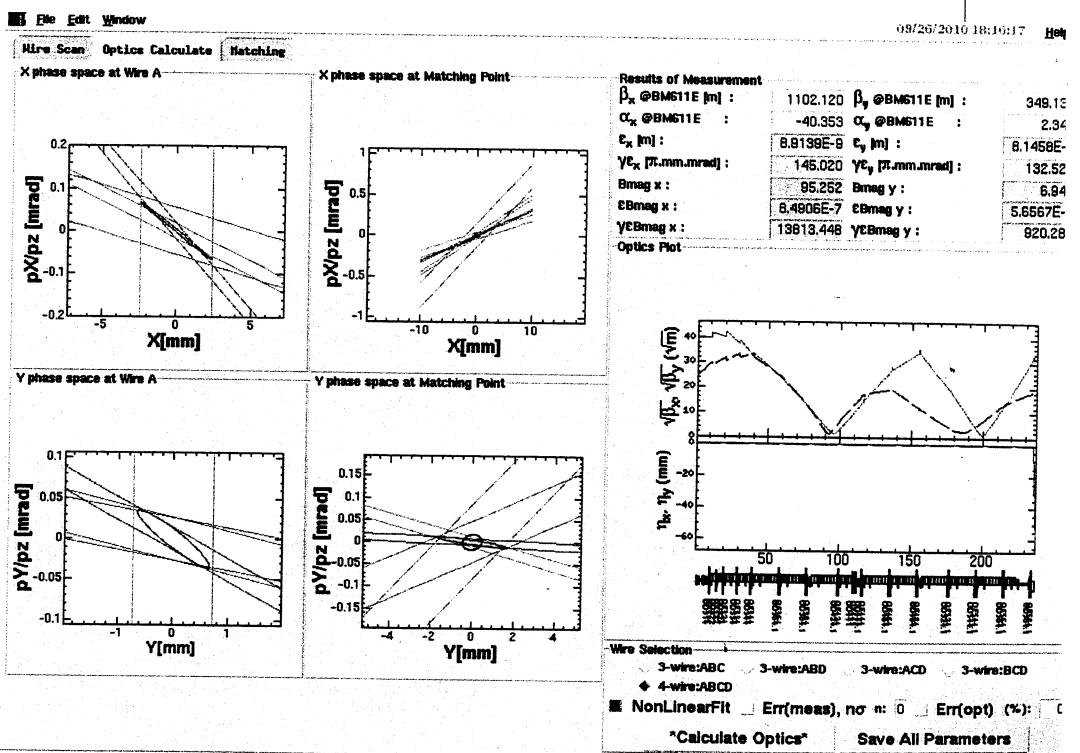
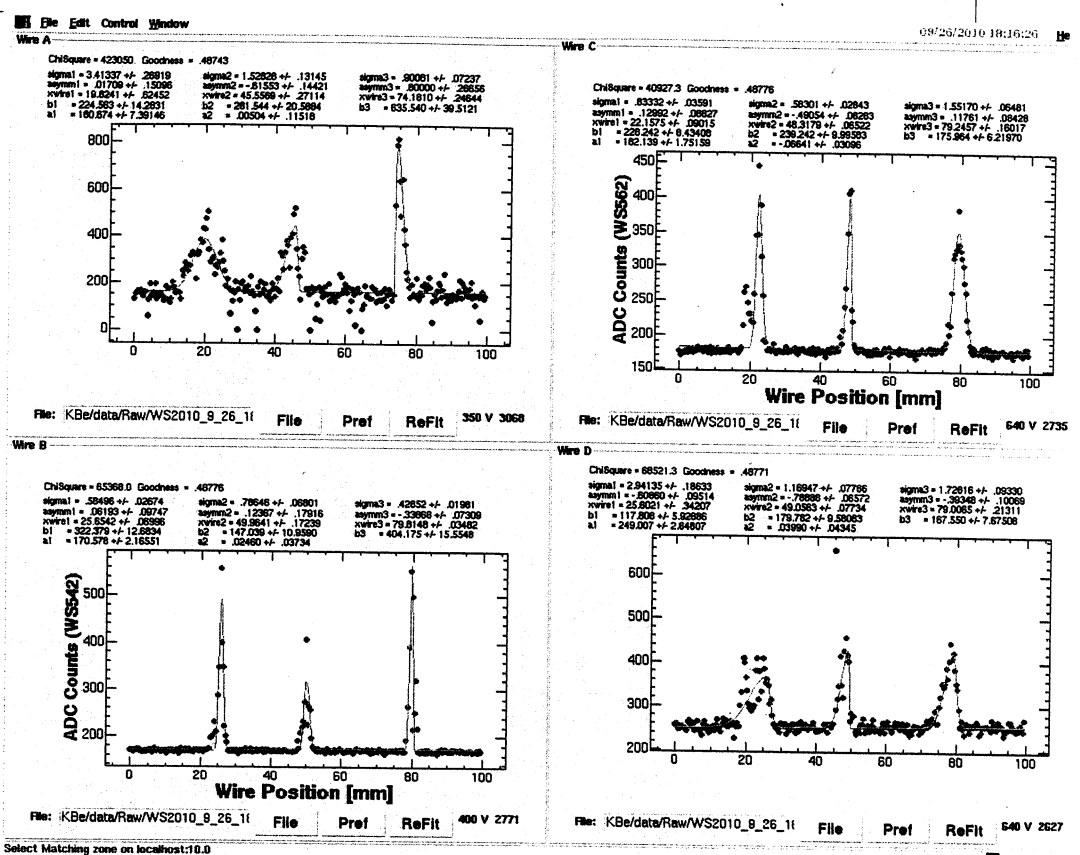


Select Matching zone on localhost:10.0



Qmag values were SAVED to /data1/KEKB/Wire/LINAC/sector/CElectron/data/Qvalue/qname_2010_9_26_10_26_56.dat

Wire Scanner
5e77-
5HZ



Omega values were SAVED to Adata1/KEKB/Wire/LINACsectors/KEKBe/data/Gvalue/qname_2010_9_26_18_13_56.dat

18-34

现在在IP77-7E
 BT= data4983.all, Event = 20100926-Bshift-Bunchlength15ps-dat 12-E-7

57

2010.9.26
18:51

パ>4長変更前に戻す.

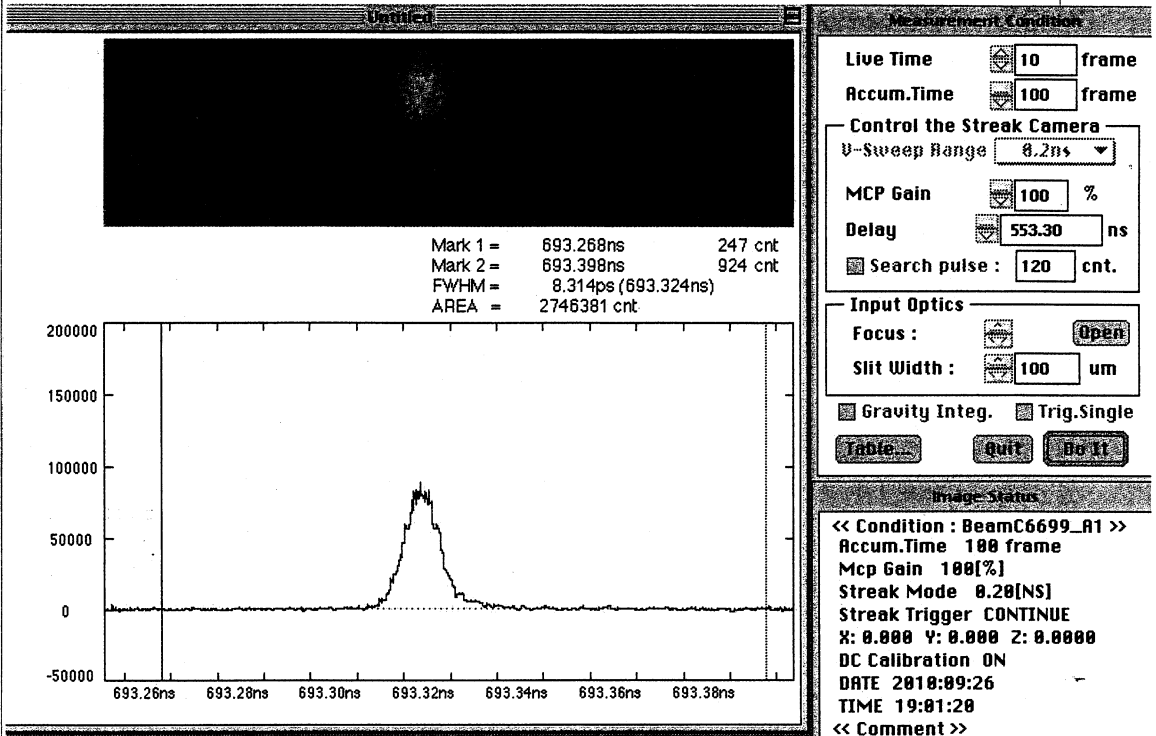
SHALSI Amplitude 32.0% → 93.75%

SHALSI Power Feedback gain 0 → -0.8(元)、START.

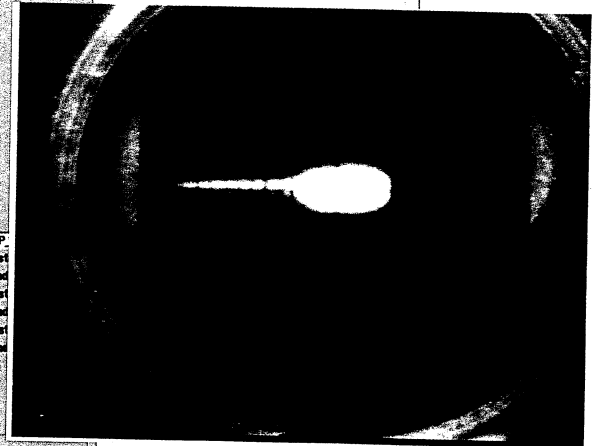
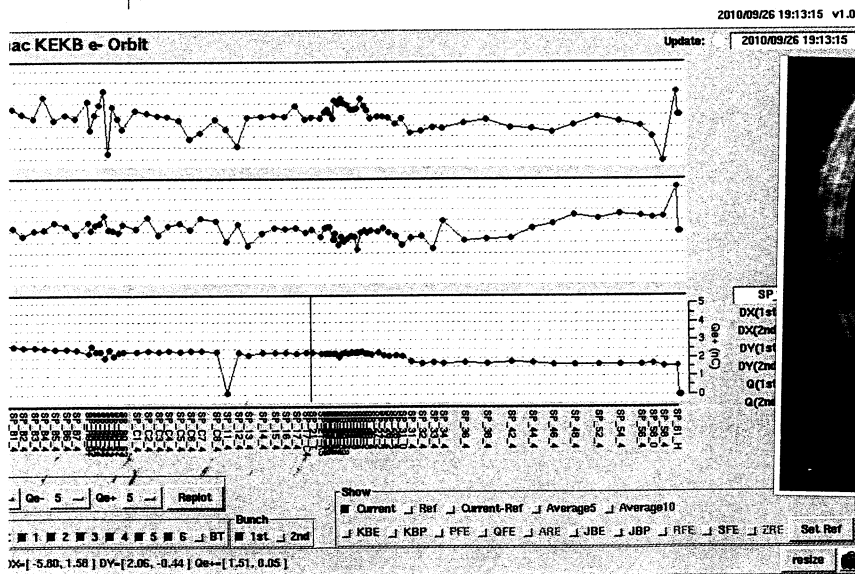
Event = 0926-1000.dat & load

BT = data4981.all & quickload.

パ>4長 8ps (10=00 & 同心程度)



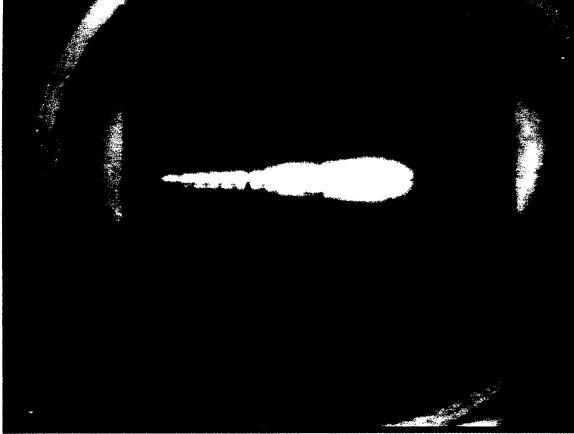
BX-17.42 0.0 → -0.5 A
SB-A, B φ 90° → 92°



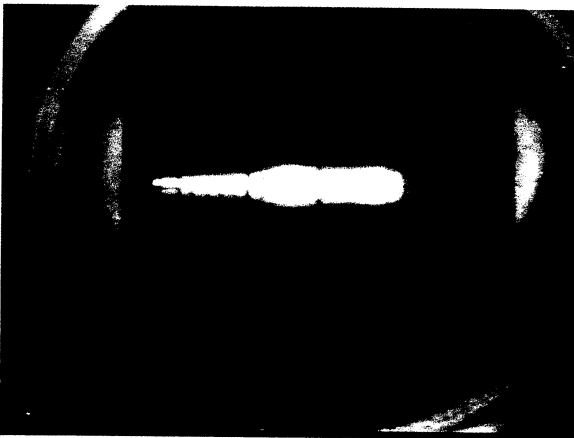
SC-R0-31

2010.9.26
19:26

SC-P031の形がバ>4長 16PSと同じになるように
SB-2φを調整の時

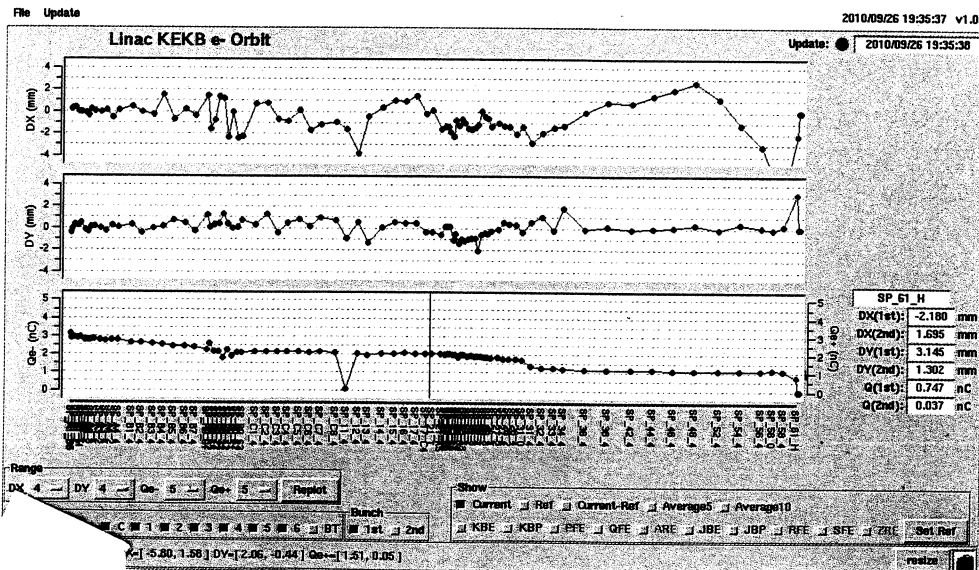


バ>4長 16PS
(18=02)



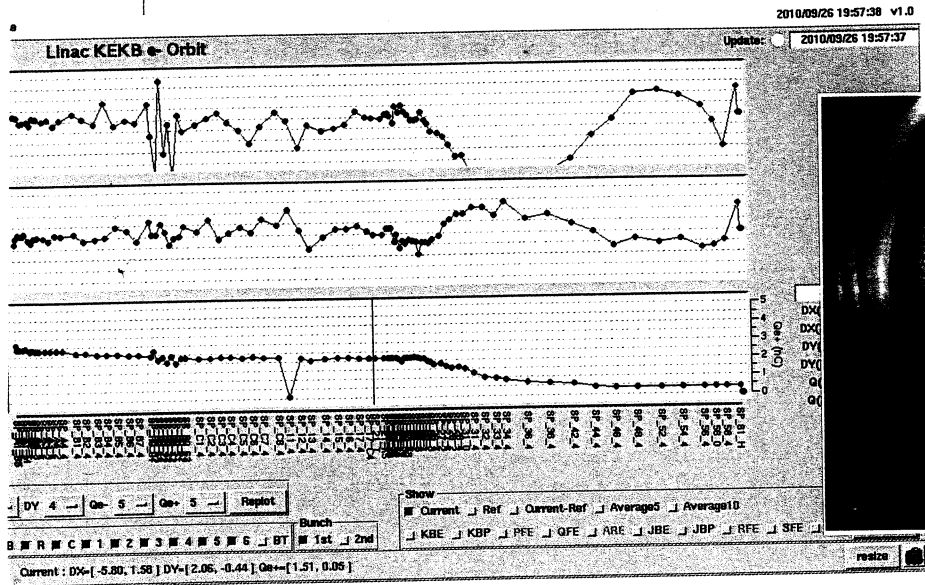
バ>4長 8PS
SB-B φ 92° → 83°
~~Energy knob (P0 knob) 1.6072 → 1.6198~~

- SB-B φ, Energy knob (P0 knob) 調整後



20:02

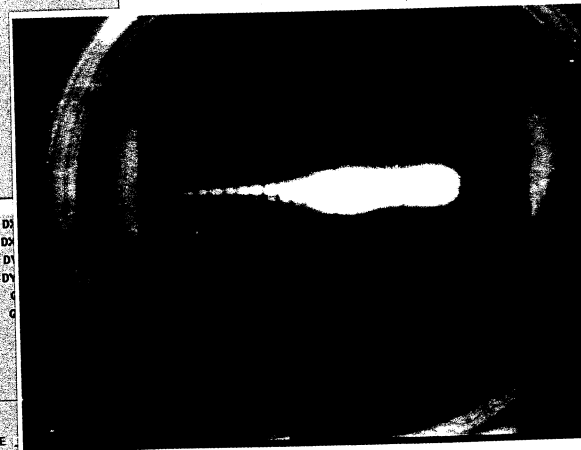
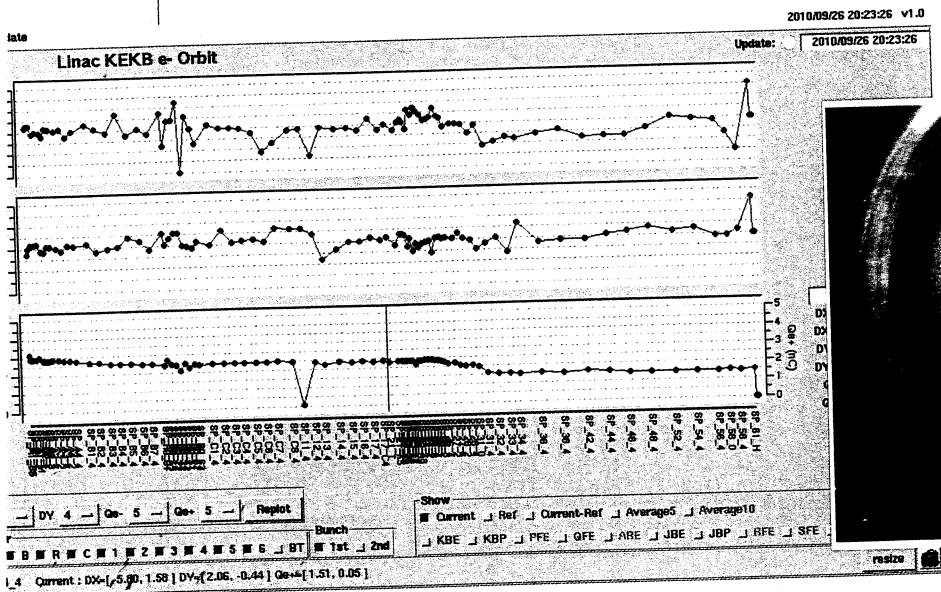
ビームの状態が変化.



SC-P0-31

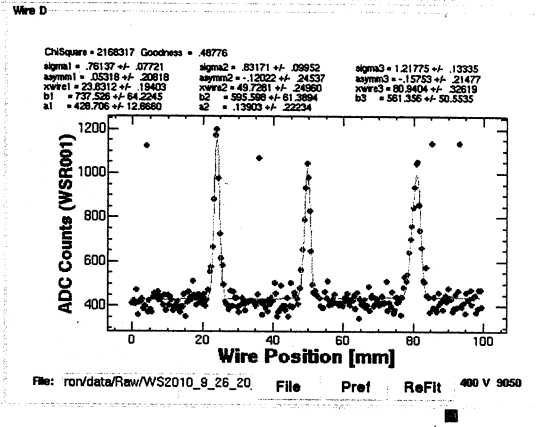
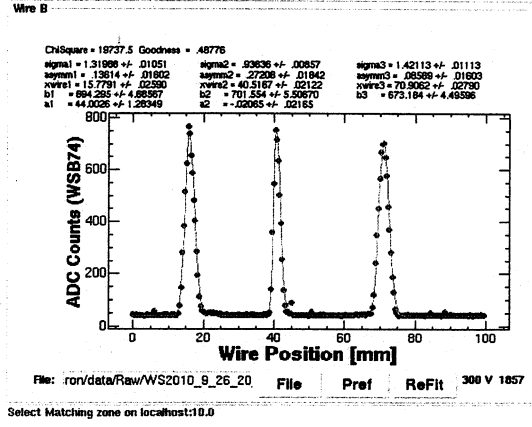
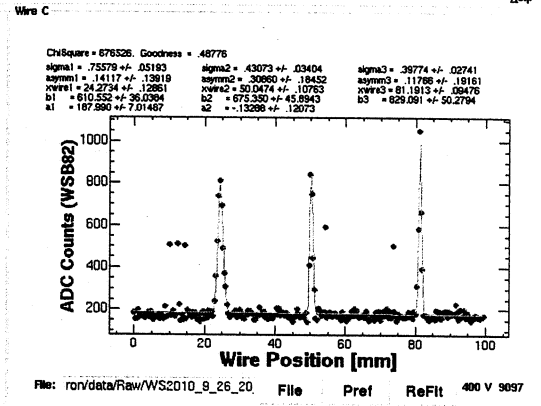
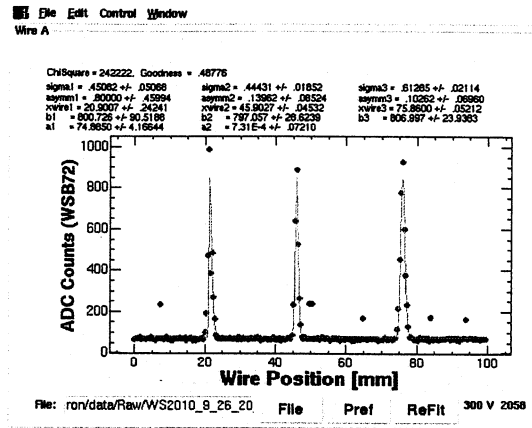
元の状態になるように調整

- SB-B ϕ $83^\circ \rightarrow 86^\circ$
- Energy Knob (ro-kbe) 1.6092 \rightarrow 1.6198
- BX-17-C1 0.302A \rightarrow 0.101A
- BX-17-C5 -0.630A \rightarrow -0.680A
- BX-23-31 -0.9A \rightarrow -0.6A
- BY-23-31 0A \rightarrow 0.3A



SC-P0-31

Wire Scanner
B e r t -
5 Hz



Select Matching zone on localhost:10.0

File Edit Window

08/20/2016 20:57:00 Help

Wire Scan Optics Calculate Matching

X phase space at Wire A

X phase space at Matching Point

Y phase space at Wire A

Y phase space at Matching Point

Results of Measurement

β_x @SCR003 [m] :	35.340	β_y @SCR003 [m] :	3.198
α_x @SCR003 :	13.416	α_y @SCR003 :	-1.185
ϵ_x [m] :	2.2070E-8	ϵ_y [m] :	5.8300E-8
γ_{rx} [radian.mrad] :	73.422	γ_{ry} [radian.mrad] :	193.854
Bmag x :	1.001	Bmag y :	2.201
EBmag x :	2.2091E-8	EBmag y :	1.2890E-7
γ_{CBmag} x :	73.492	γ_{CBmag} y :	-426.837

Optics Plot

Wire Selection

3-wire:ABC 3-wire:ABD 3-wire:ACD 3-wire:BCD

4-wire:ABCD

NonLinearFit Err(mess), no n: 0 Err(opt) (%): 0

Calculate Optics Save All Parameters

Omag values were SAVED to Adata1/KEKB/Wire/LINACsector/Belectron/data/Ovalue/qname_2010_9_26_20_36_10.dat0