

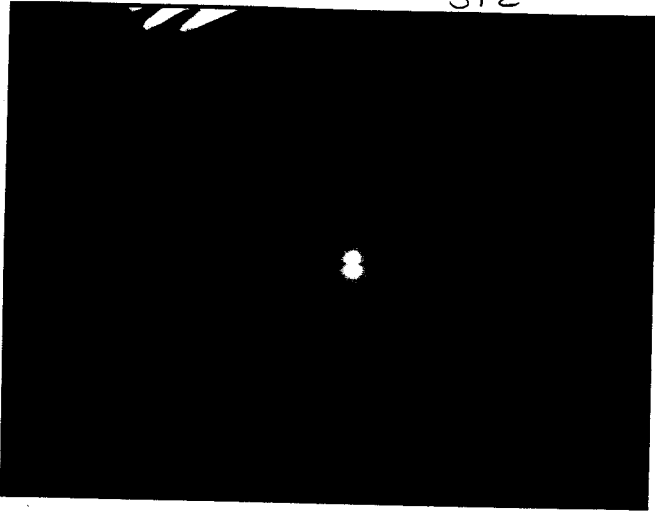
18:45

8 GeV $\tau^- e^-$ 通し

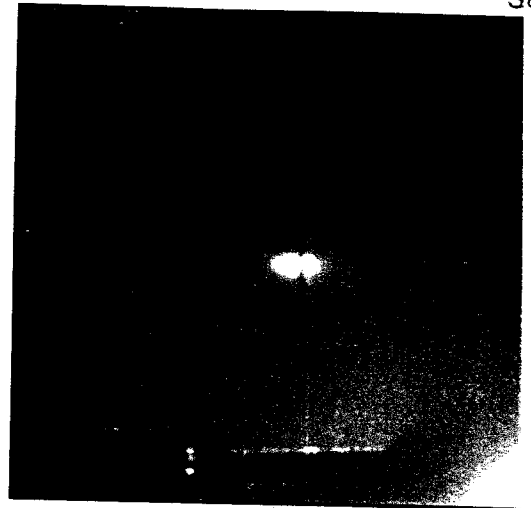
144

8 GeV τ^- 通し

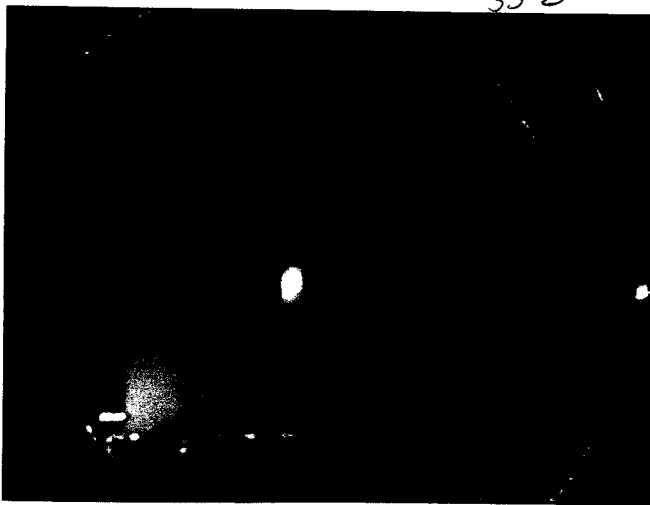
512



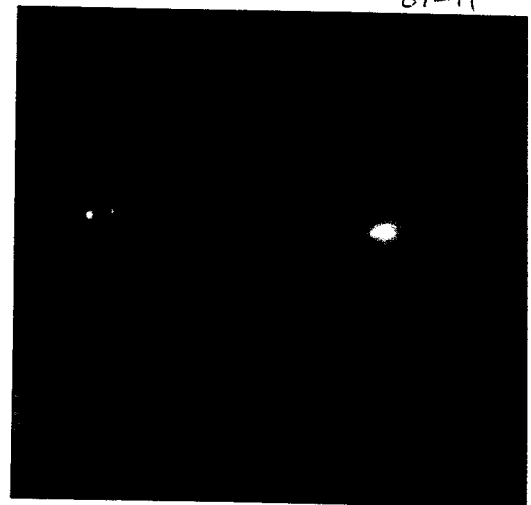
58-2



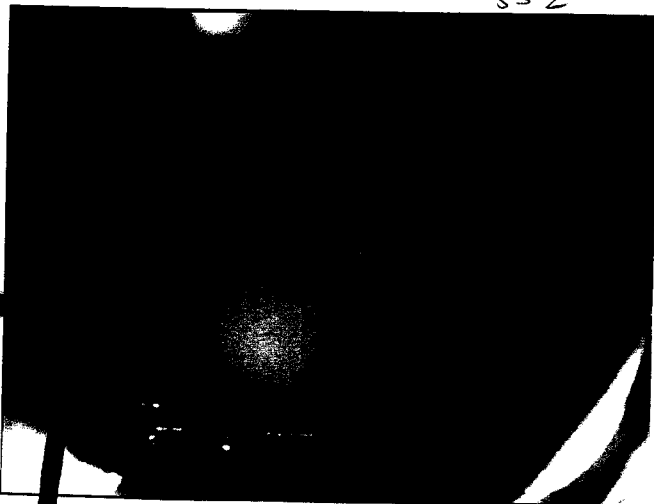
53-2

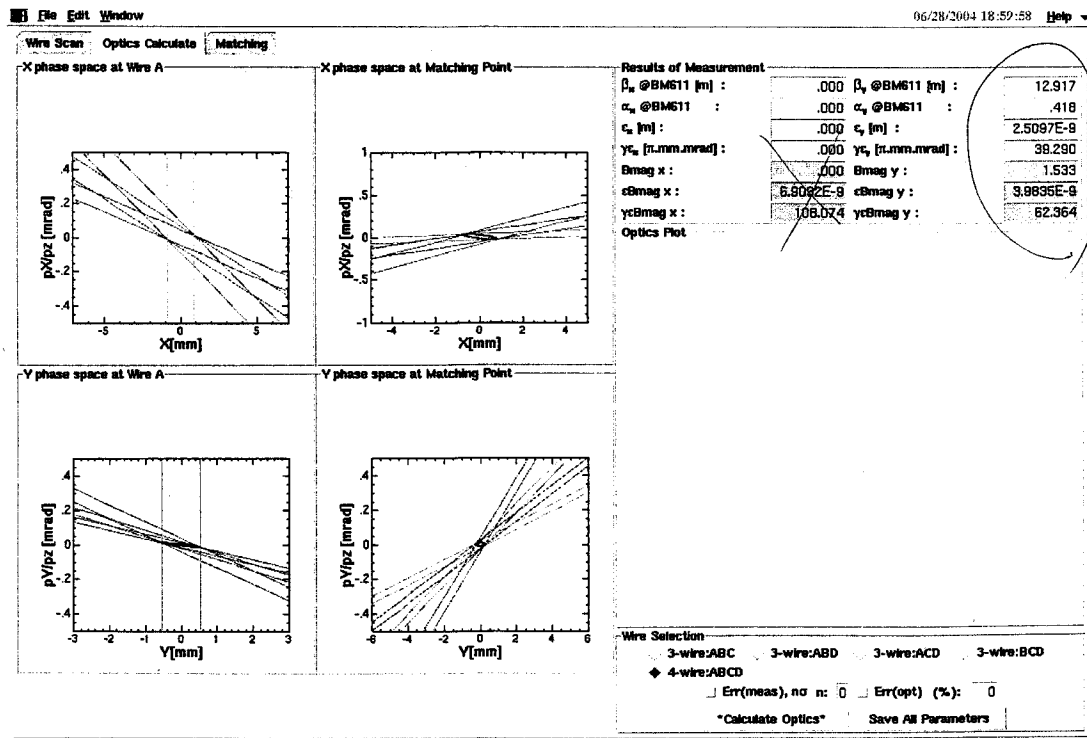
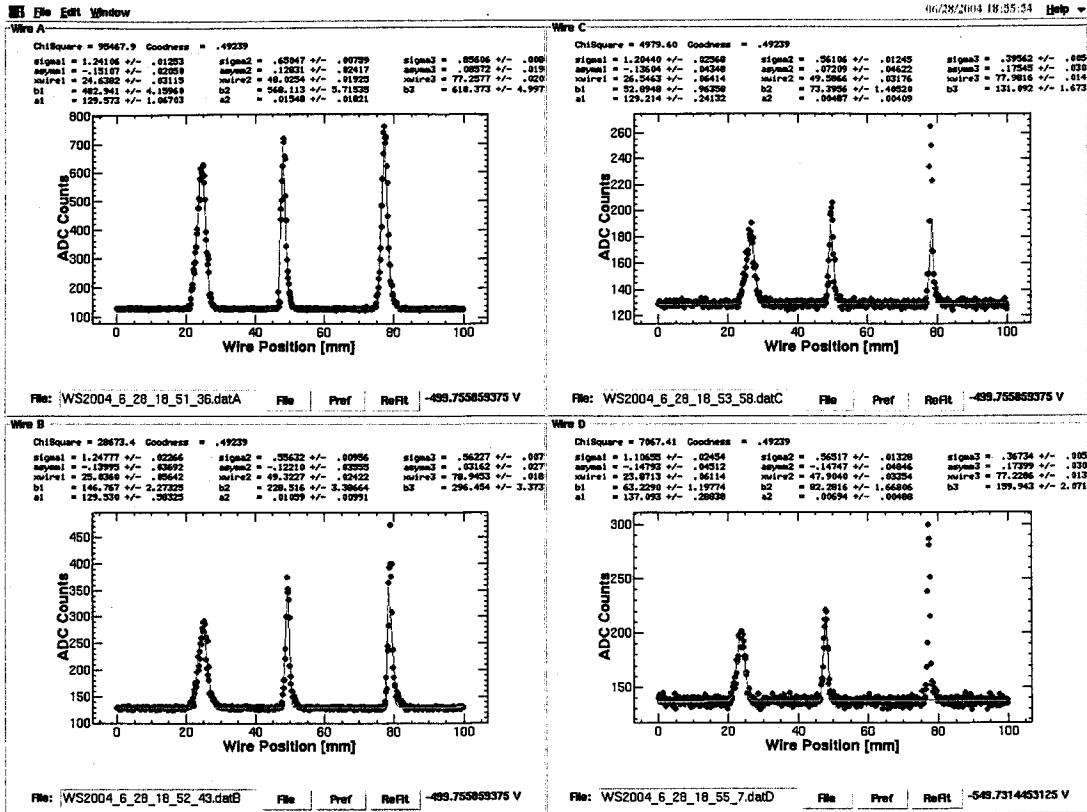


61-H



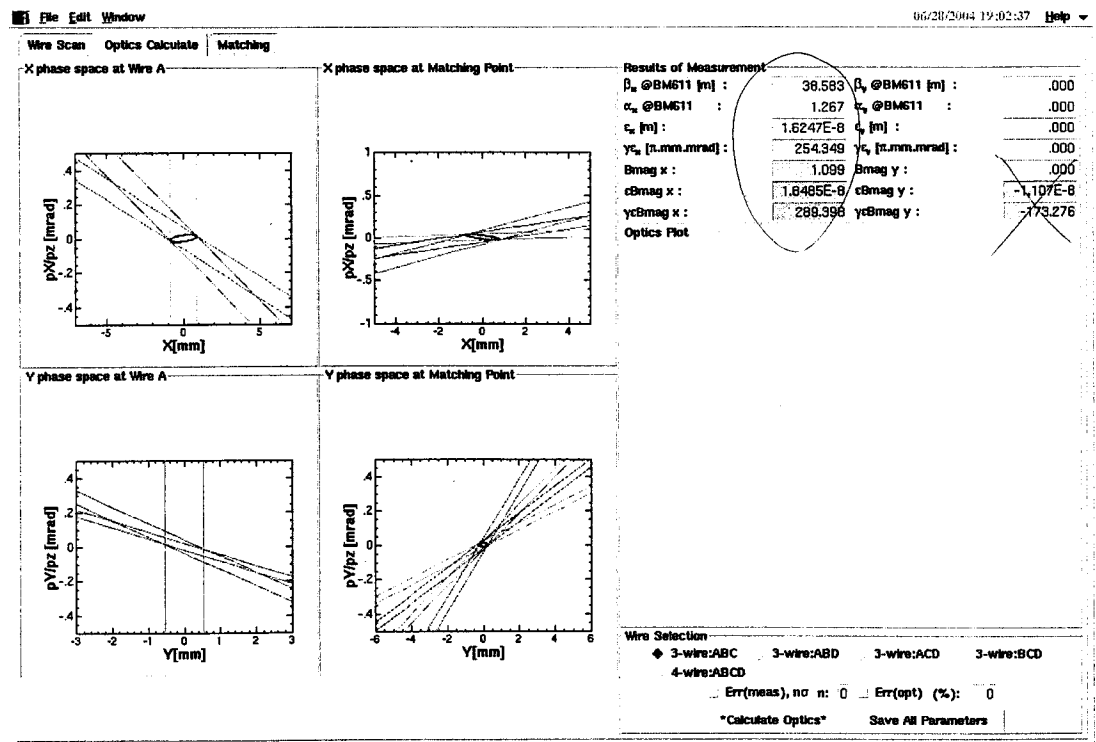
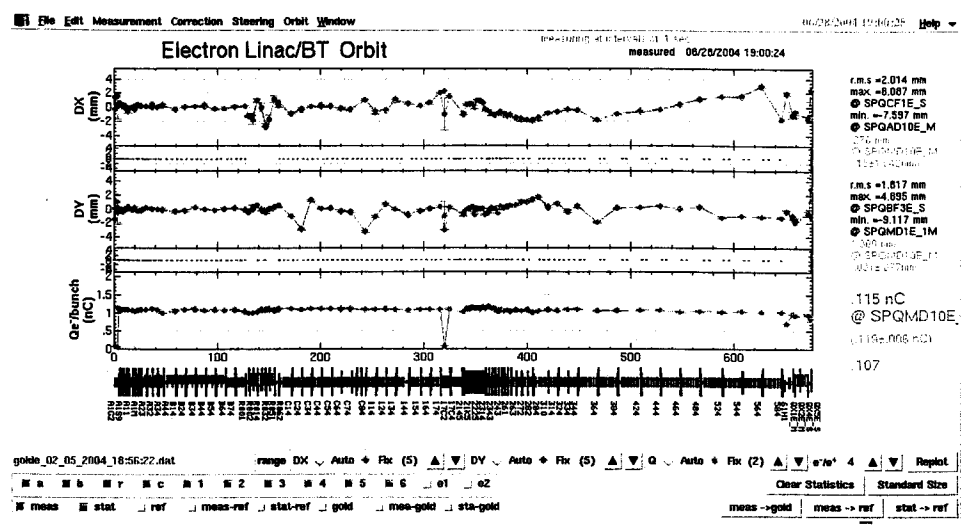
55-2





Optmag values were SAVED to /data1/KEKB/Wire/LINAC/sector5/KEKB/data/Gvalue/optmag_2004_6_28_18_48_57.dat0

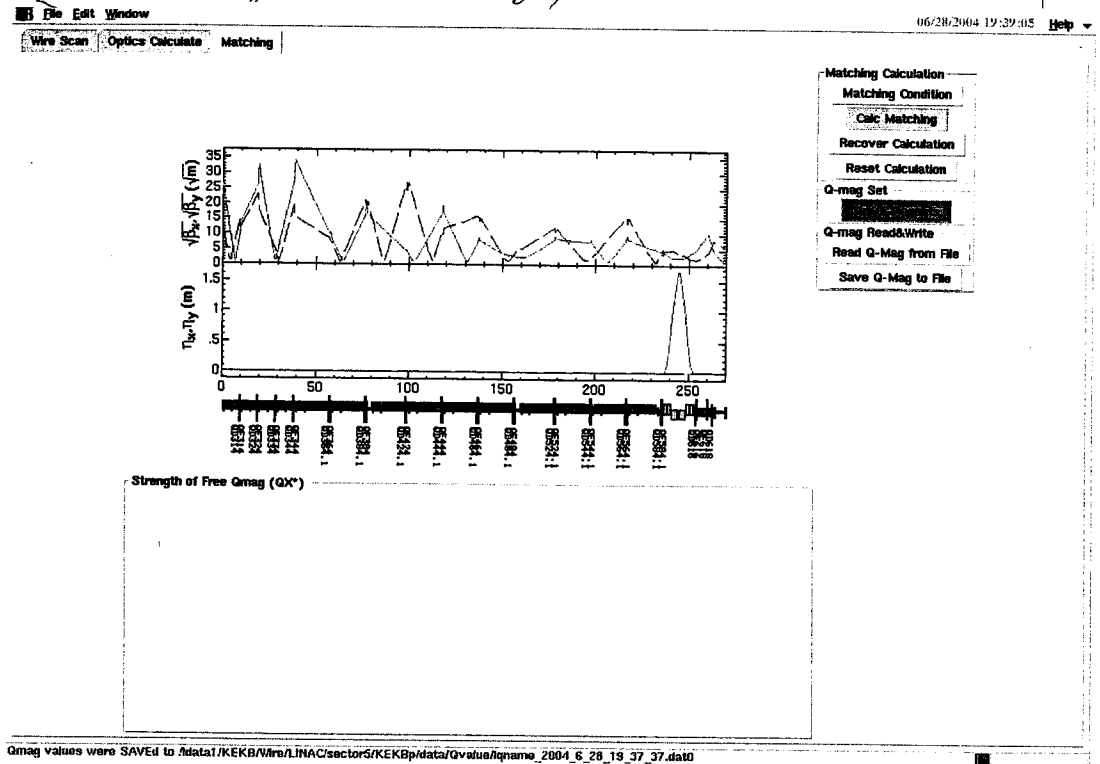
SGEV



Qmag values were SAVED to Adata1/KEKB/Wire/LINAC/sector5/KEKB\data/Qvalue/qname_2004_6_28_18_48_57.dat

二次電子速度変動 ~~測定~~ 不十分
 (Velocity Bunching)

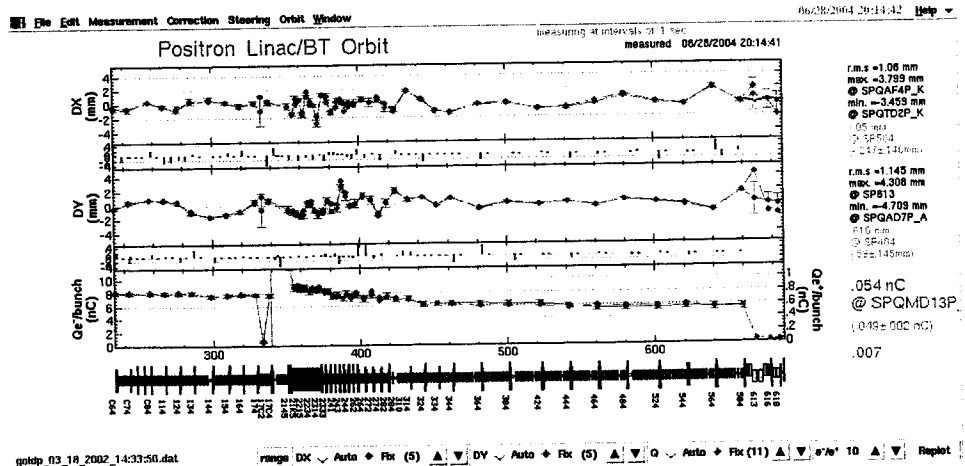
19:30



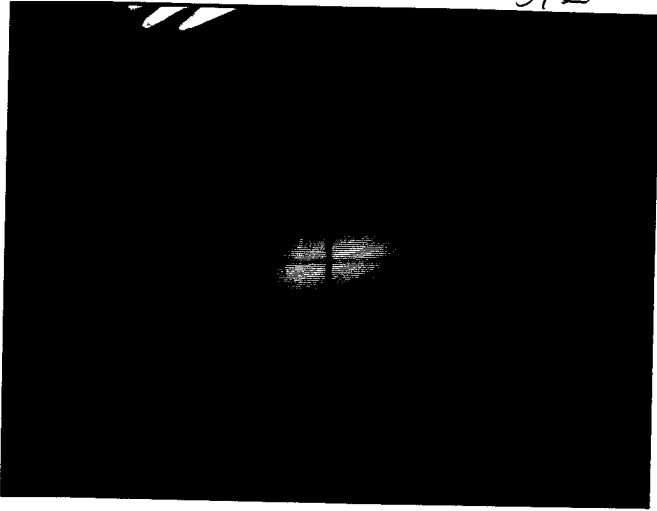
- 軌道補正 (Manual by 大西 さん)
- Energy 8.0 → 3.5 GeV へ (横山 さん)
- Energy Spread 調整 (")

~20:00

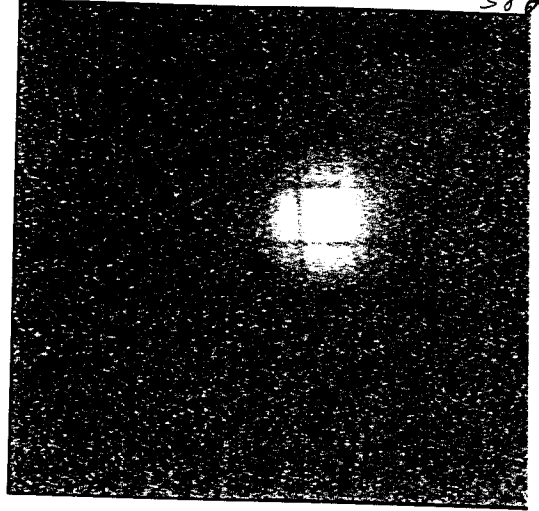
20:16 "2nd e-1" に 位相 と magnet を 保存。



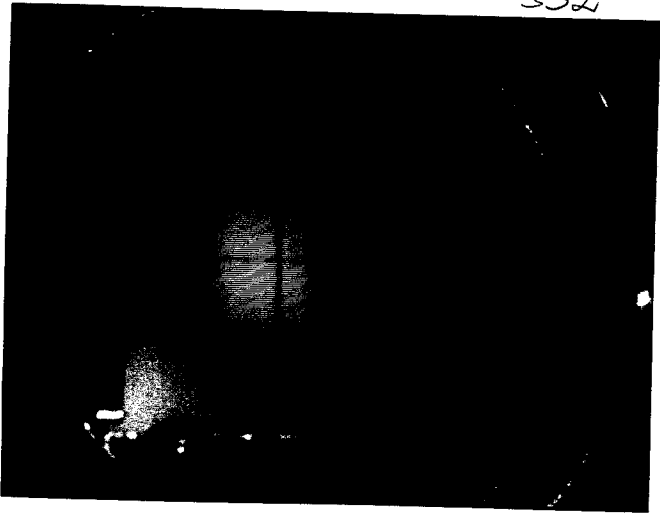
512



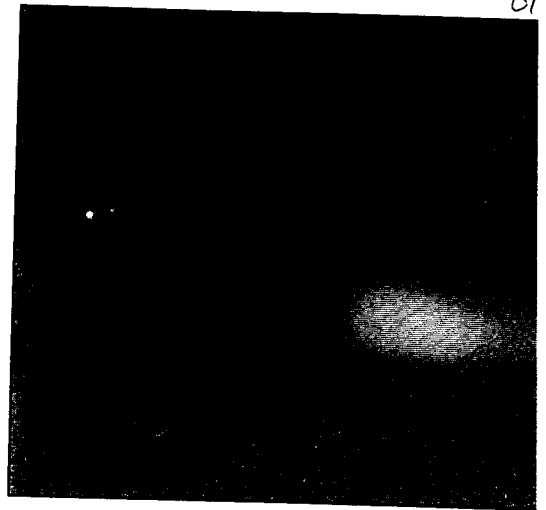
582



532

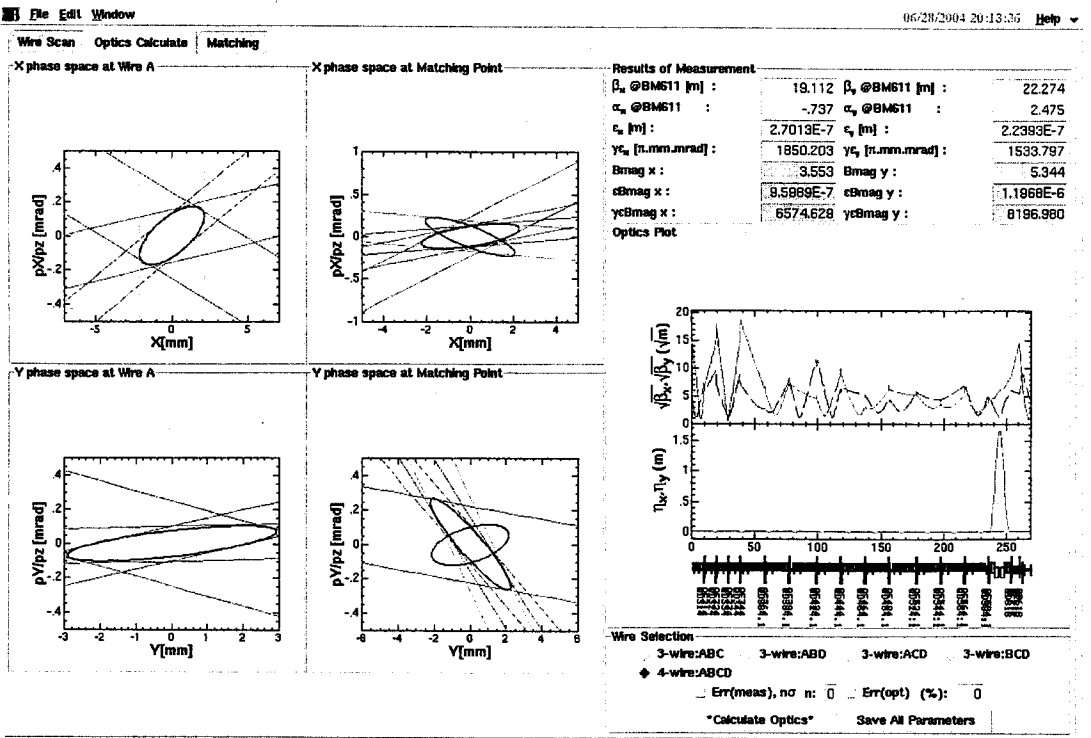
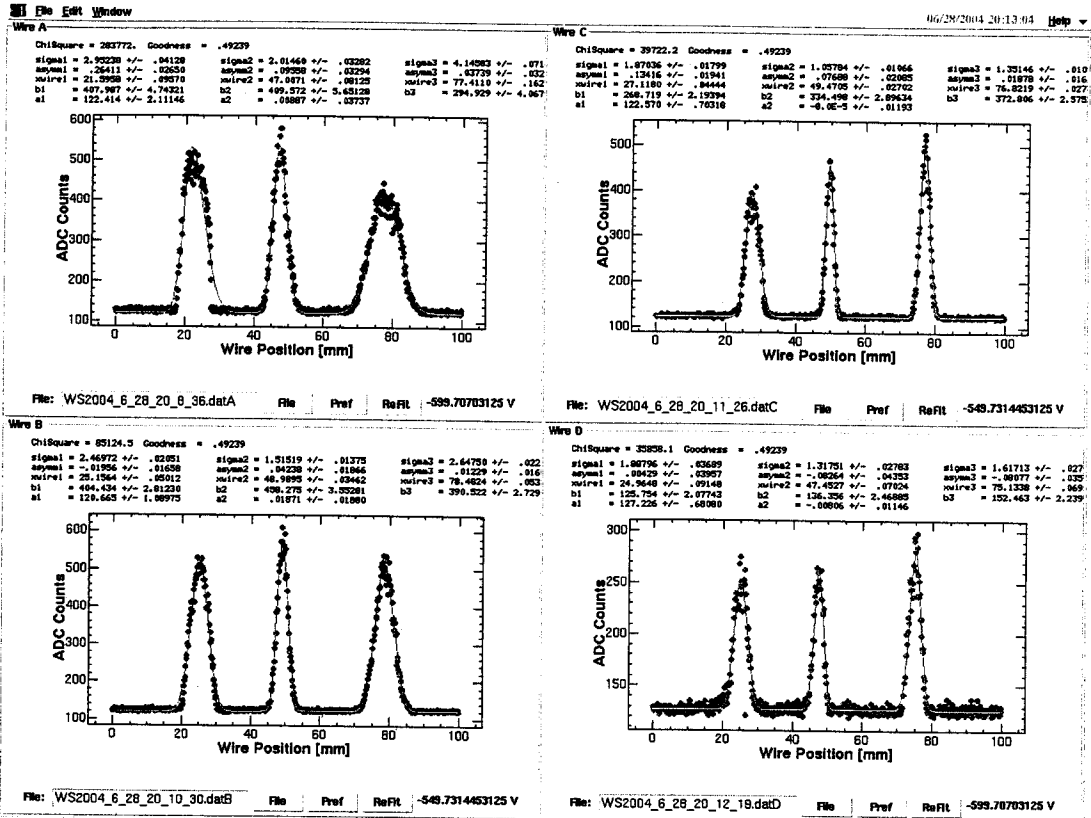


61H



552



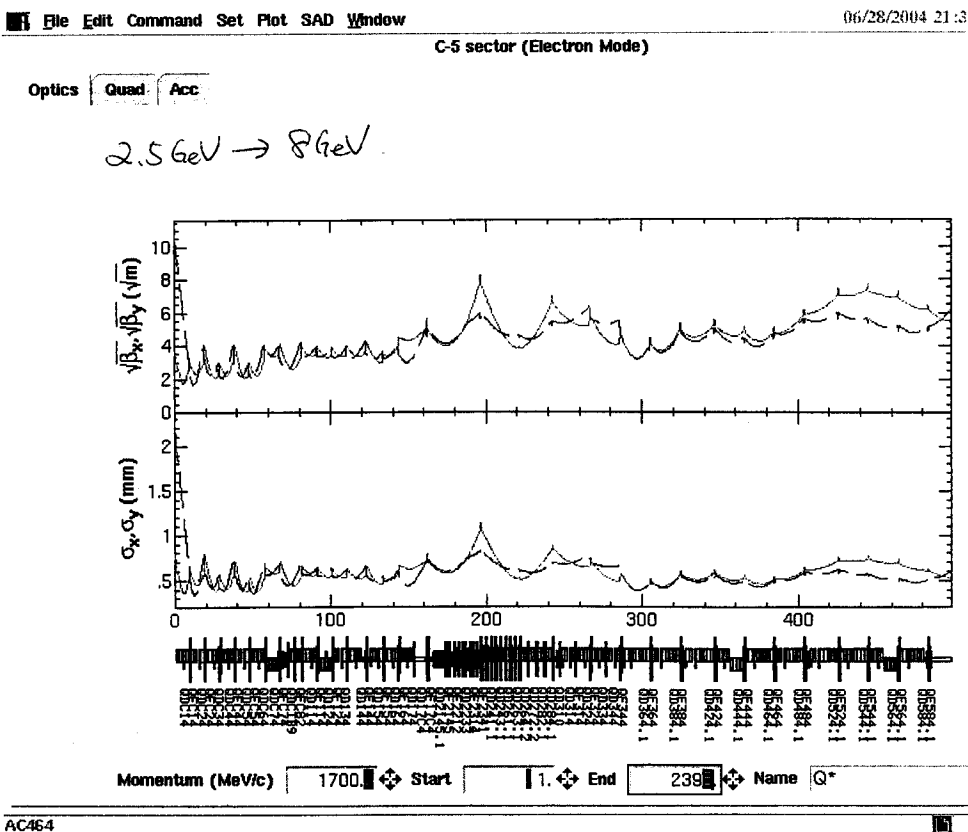
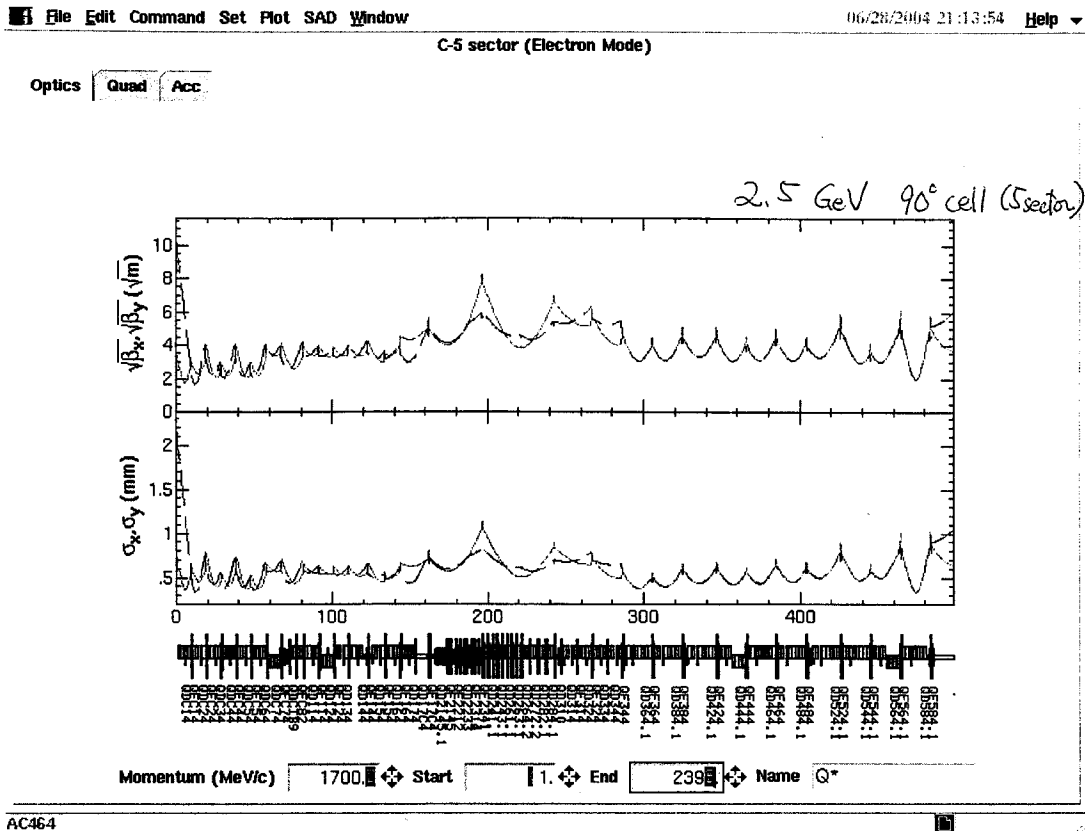


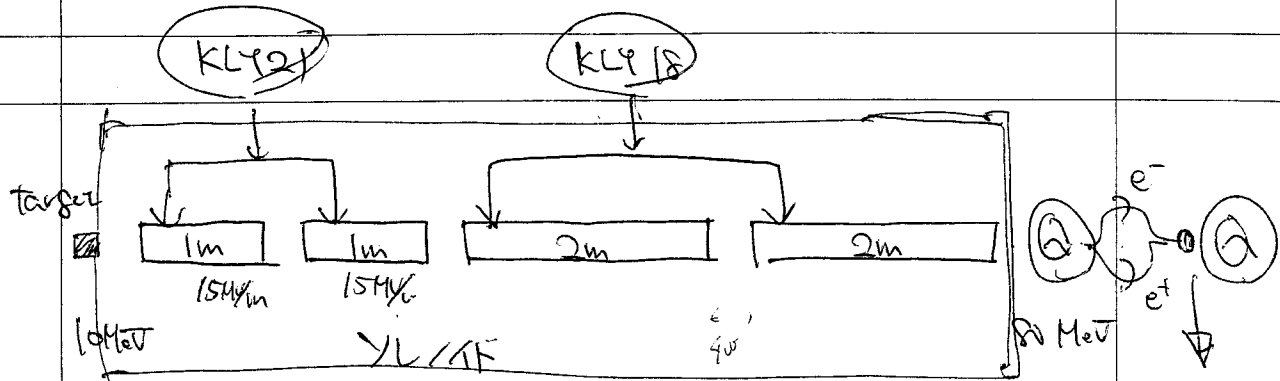
Omag values were SAVED to ddata1/KEKB/Wire/LINAC/sector5/KEKBpdata/Ovauia/qname_2004_6_28_20_5_38.dat0

1/users/ida/sad/wire/
"LINAC_BTmatch_2bunchTemp_test2.sad"

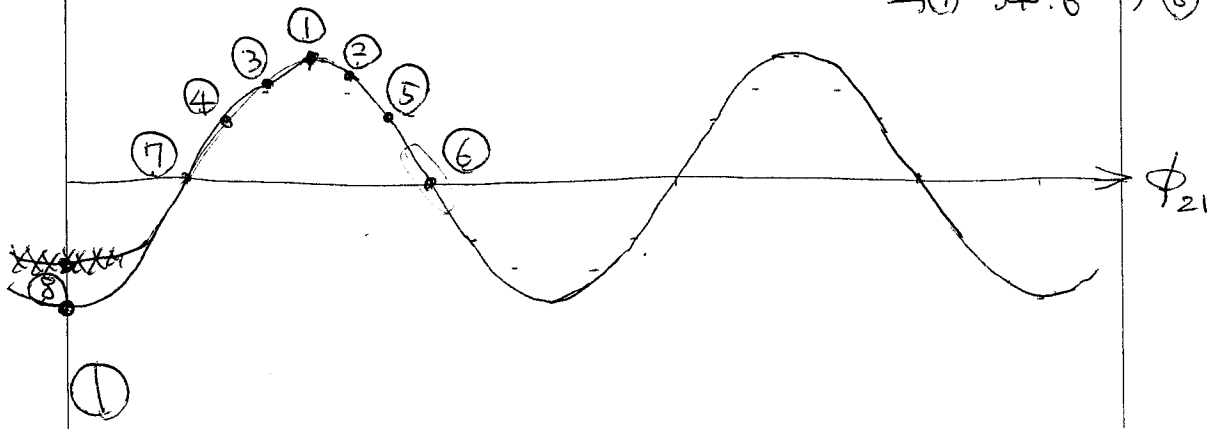
P146の通り. (multi-energy study) Optics

150

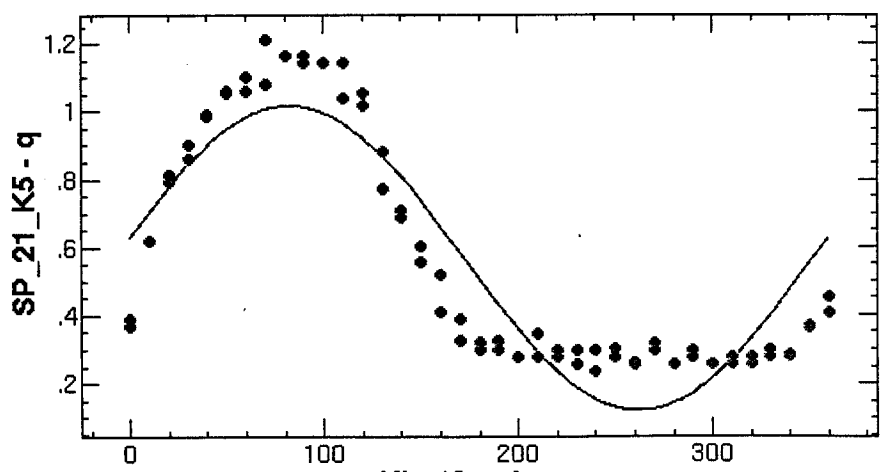




$\phi_{21} = 70.5^\circ \rightarrow 100.4^\circ \rightarrow 40.5^\circ \rightarrow 10.5^\circ \rightarrow 130.4^\circ$
 $\phi_{18} = 81.0^\circ \rightarrow \text{Scan} \rightarrow 160.5^\circ$
 $\rightarrow 340.6^\circ \rightarrow 250.5^\circ$



File Edit Window 06/28/2004 22:09:27 Help
 ChiSquare = 1.37028 Goodness = .47768
 a = .44874 +/- .02314 c = 622.038 +/- 2.88128 d = .56870 +/- .01616



Function = $d + (a \cos[.0174532925 (-180 + x + (-c))])$

2

File Edit Window

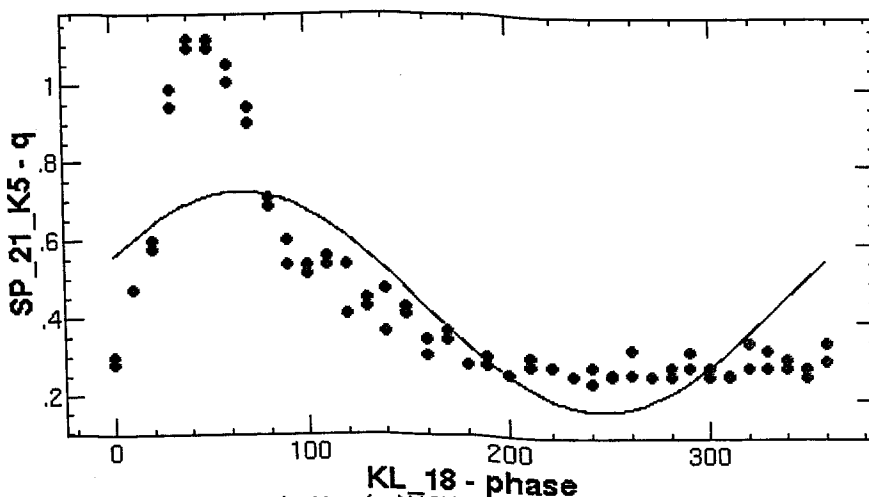
06/28/2004 22:19:34 Help

ChiSquare = 1.97750 Goodness = .47768

a = .28109 +/- .02770

c = 245.938 +/- 5.54833

d = .44509 +/- .01941



Function = (d+(a Cos[({.0174532925 (-180+x+(-c))}])))

Main Application Area

3

File Edit Window

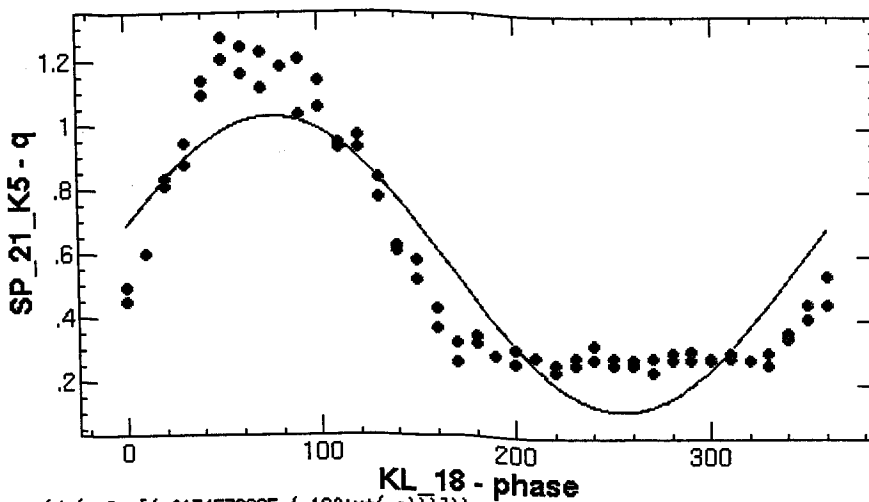
06/28/2004 22:30:06 Help

ChiSquare = 1.51882 Goodness = .47768

a = .45825 +/- .02434

c = 255.177 +/- 2.97393

d = .57212 +/- .01701



Function = (d+(a Cos[({.0174532925 (-180+x+(-c))}])))

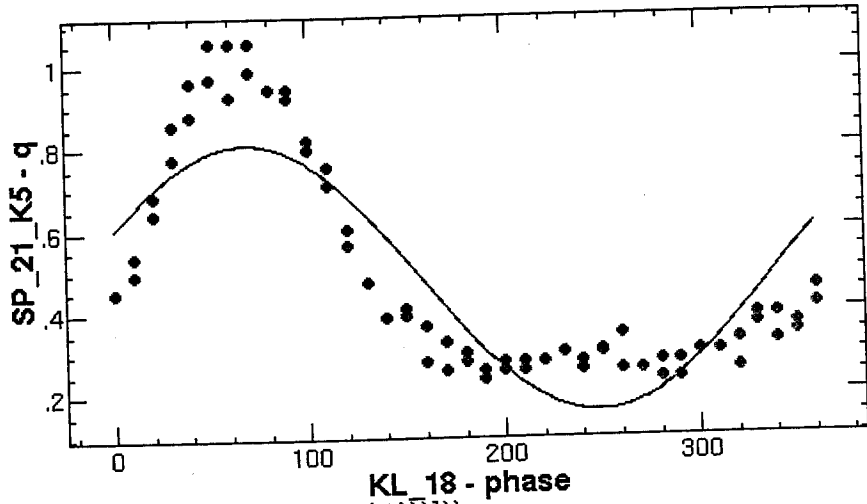
Main Application Area

4

File Edit Window

06/28/2004 22:38:20 Help

ChiSquare = 1.18602 Goodness = .47768
 a = .32636 +/- .02146 c = 247.560 +/- 3.69969 d = .48285 +/- .01504



Function = (d+(a Cos[({.0174532925 (-180+x+(-c))})])

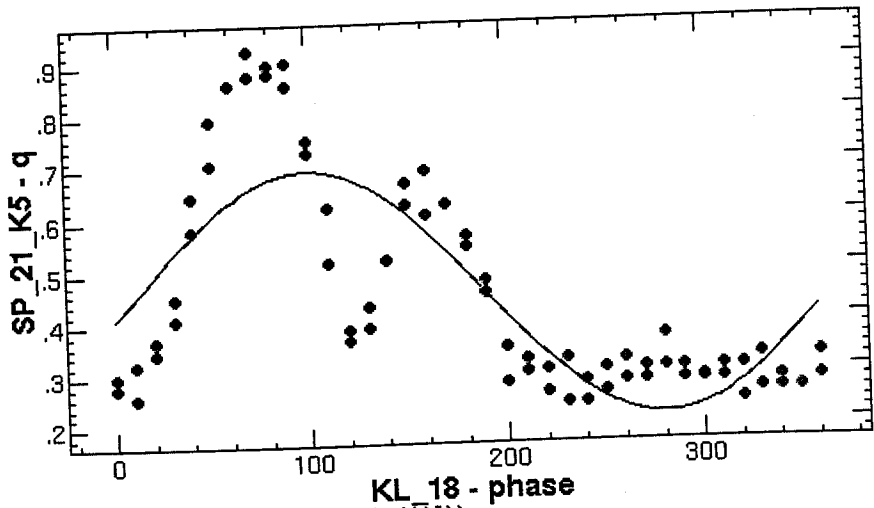
Main Application Area

5

File Edit Window

06/28/2004 22:45:44 Help

ChiSquare = 1.18306 Goodness = .47768
 a = -.24046 +/- .02150 c = 459.780 +/- 4.99782 d = .45347 +/- .01502



Function = (d+(a Cos[({.0174532925 (-180+x+(-c))})])

Main Application Area