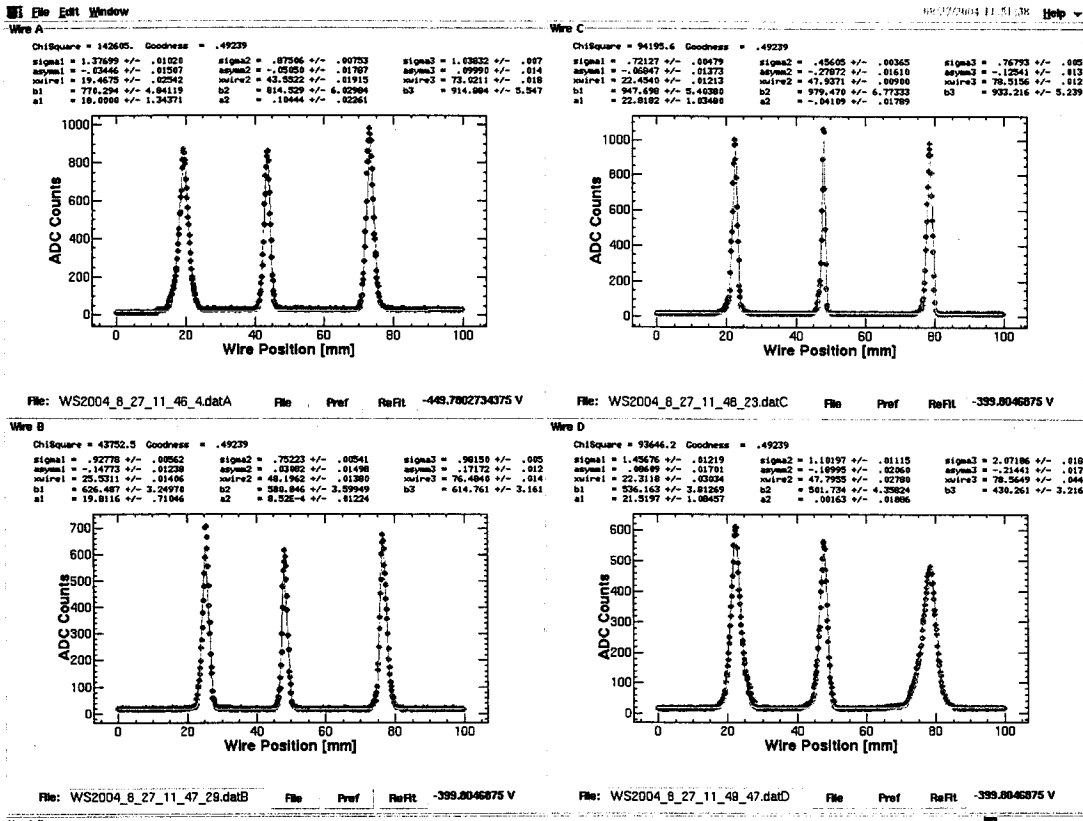
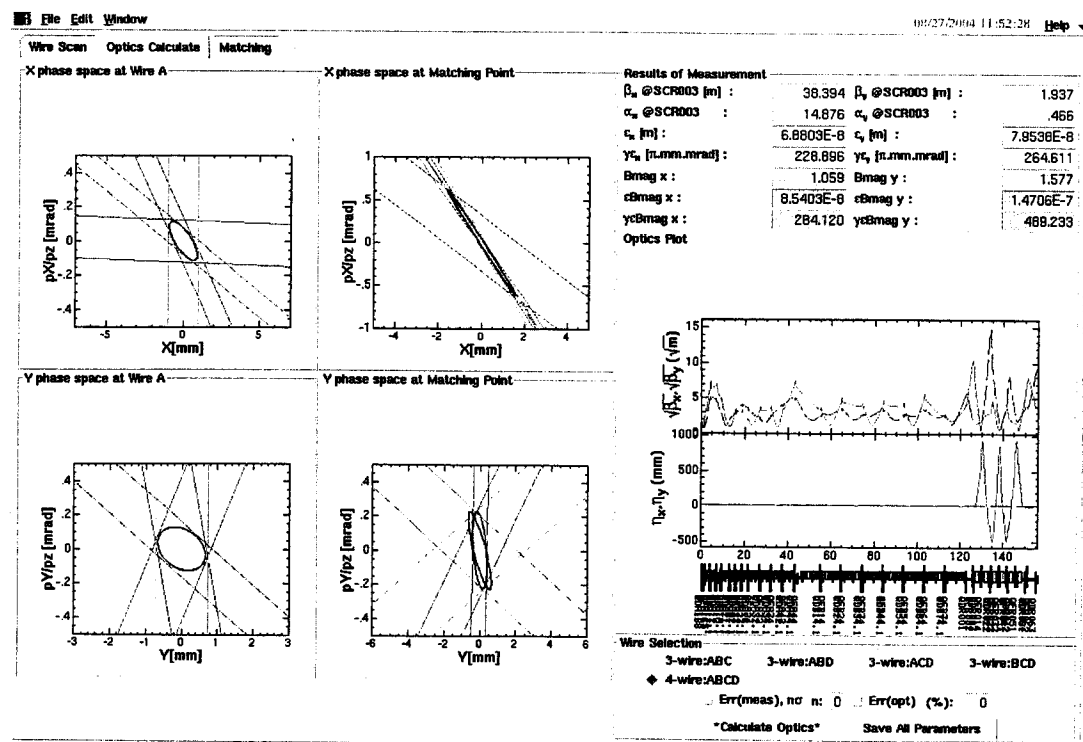


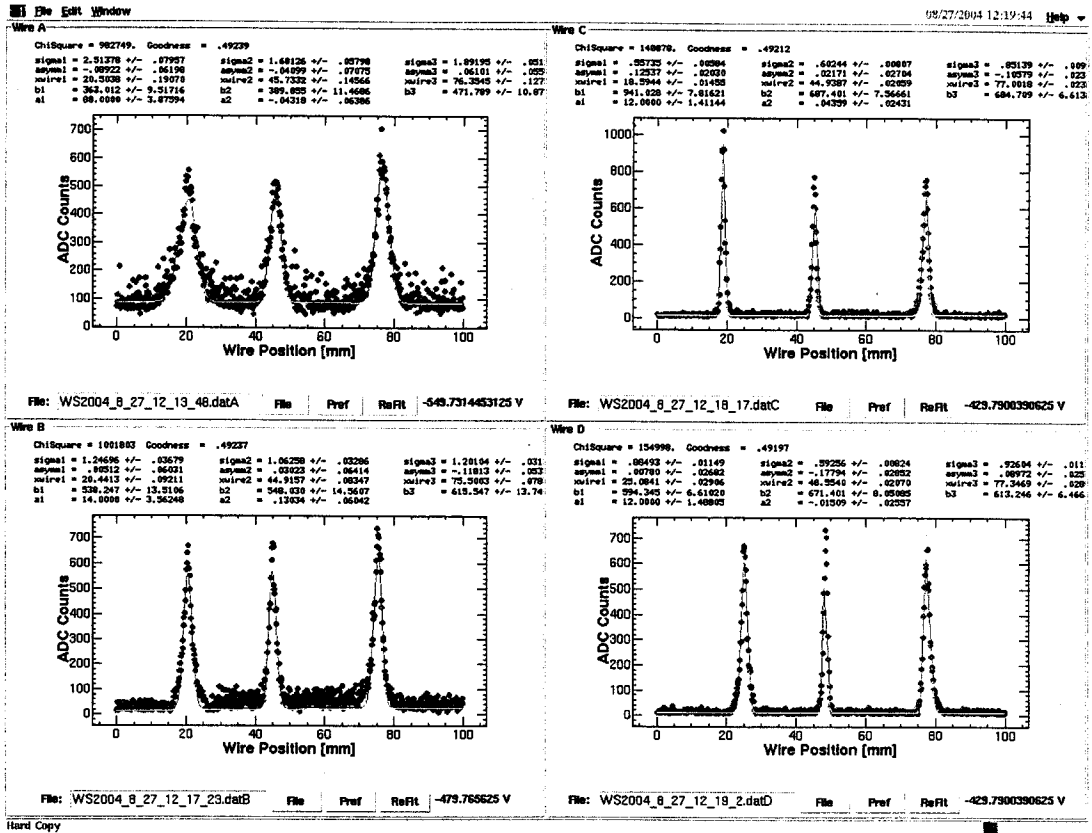
Beta-ワイヤスポット



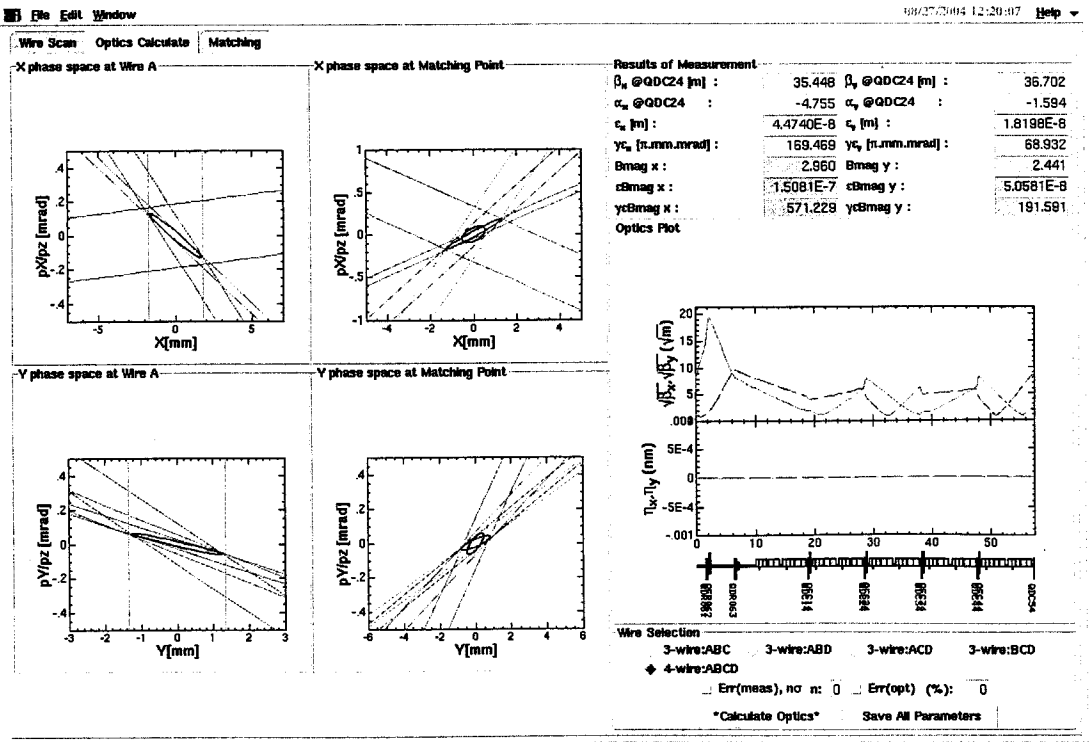
Hard Copy



セクタ-ワイヤ-スキャナ



Hard Copy



Qmag values were SAVED to Jdata1/KEKB/Wire/LINAC/sector/eletron/data/Qvalue/qname_2004_8_27_12_10_56.dat0

File Edit Window

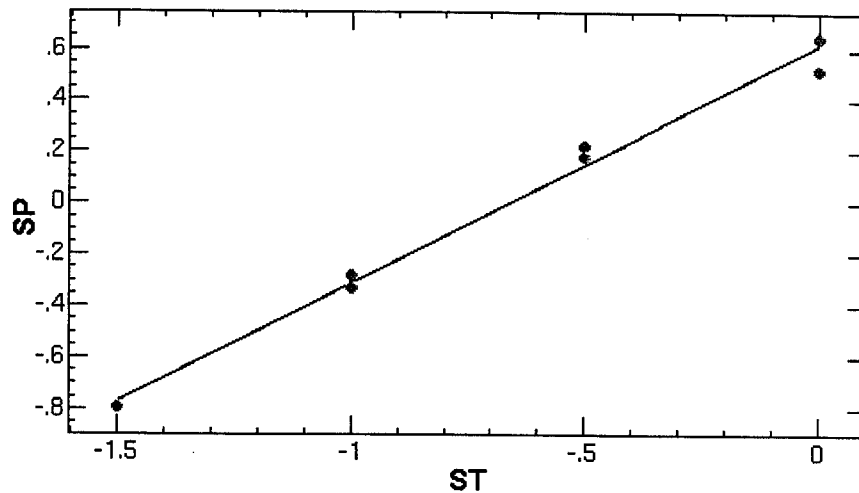
Al. 77314-

08/27/2004 15:20:36 Help

ChiSquare = .01766 Goodness = .42319

a = .92720 +/- .03431

b = .61615 +/- .03209



Function = (b+(a x))

Energy at A1_B8 : 16.231665228645378 MeV

Main Application Area

→ 途中で止まってる。 QFAI P.S / QFAI P.S の設定に失敗する

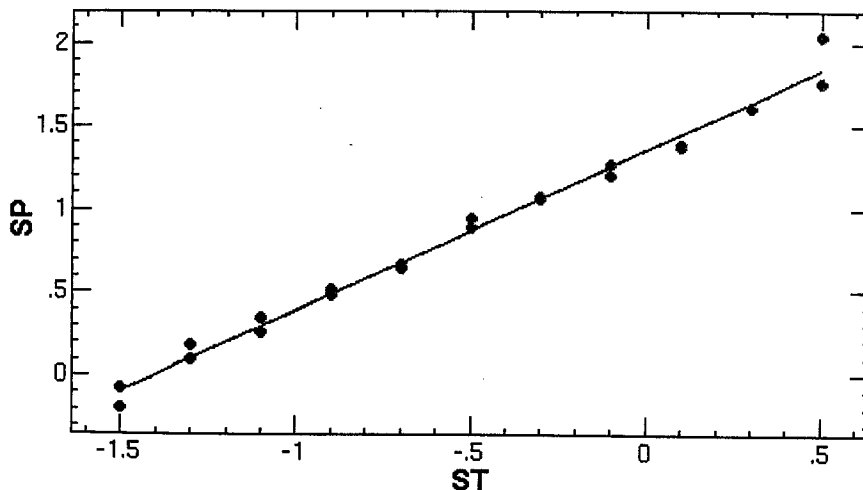
File Edit Window

08/27/2004 15:52:42 Help

ChiSquare = .08981 Goodness = .45793

a = .96380 +/- .02259

b = 1.35040 +/- .01821

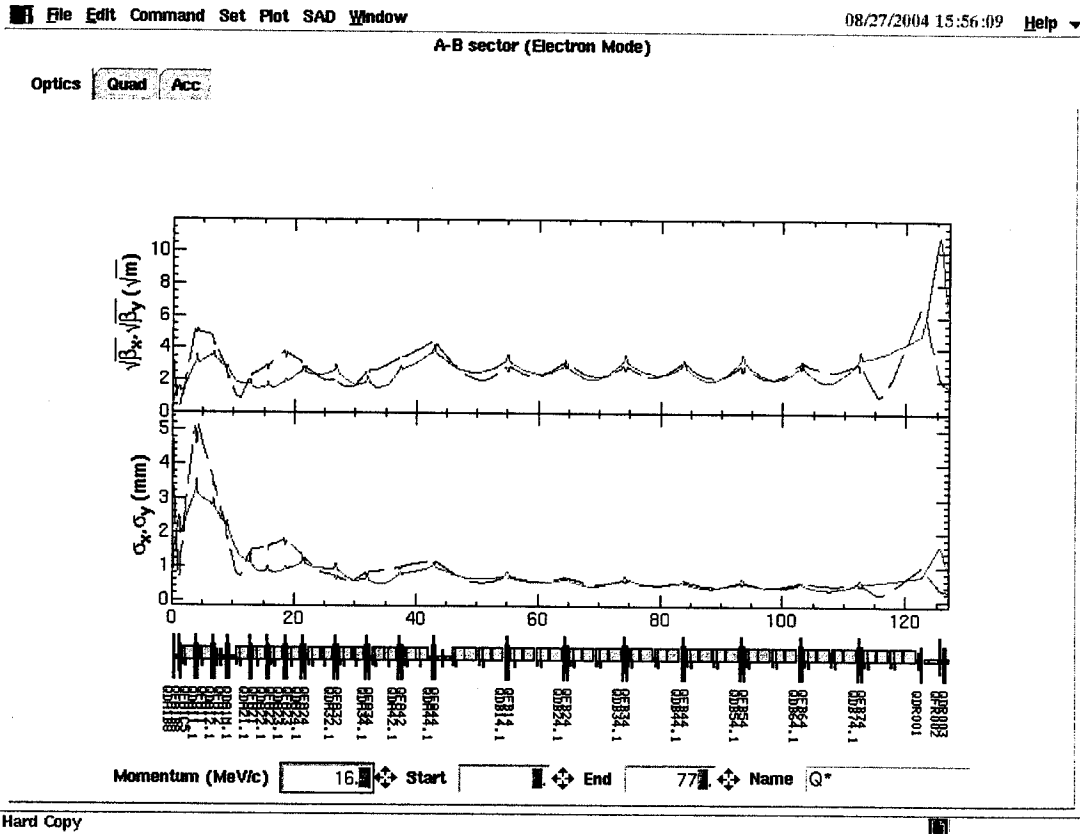


Function = (b+(a x))

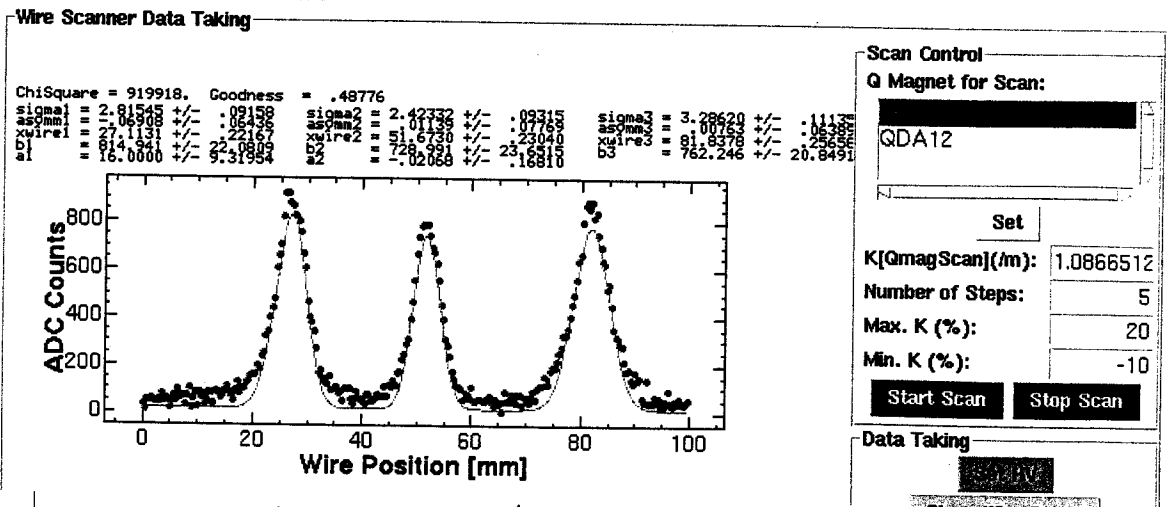
Energy at A1_B8 : 15.615346522979695 MeV

Hard Copy

ABセクタ - 打テマス



MreScan Matching Matching for Injection



QDA12.2 WSA1M QDA1M.1

1.6807 | 0.2993

P = 64 MeV

16:09

ECS Bend 8/25 14:00頃. 電源ONと同時模様.
モード切替時にONと同時可能様大.

16:23

ECS

BH GI 1/6 ϵ 3.52. (-366A \rightarrow -224.8A.)

SC GI H 2nd E-G 2ポット発見。 \rightarrow 吉田. パート7.7.
5 GeV.

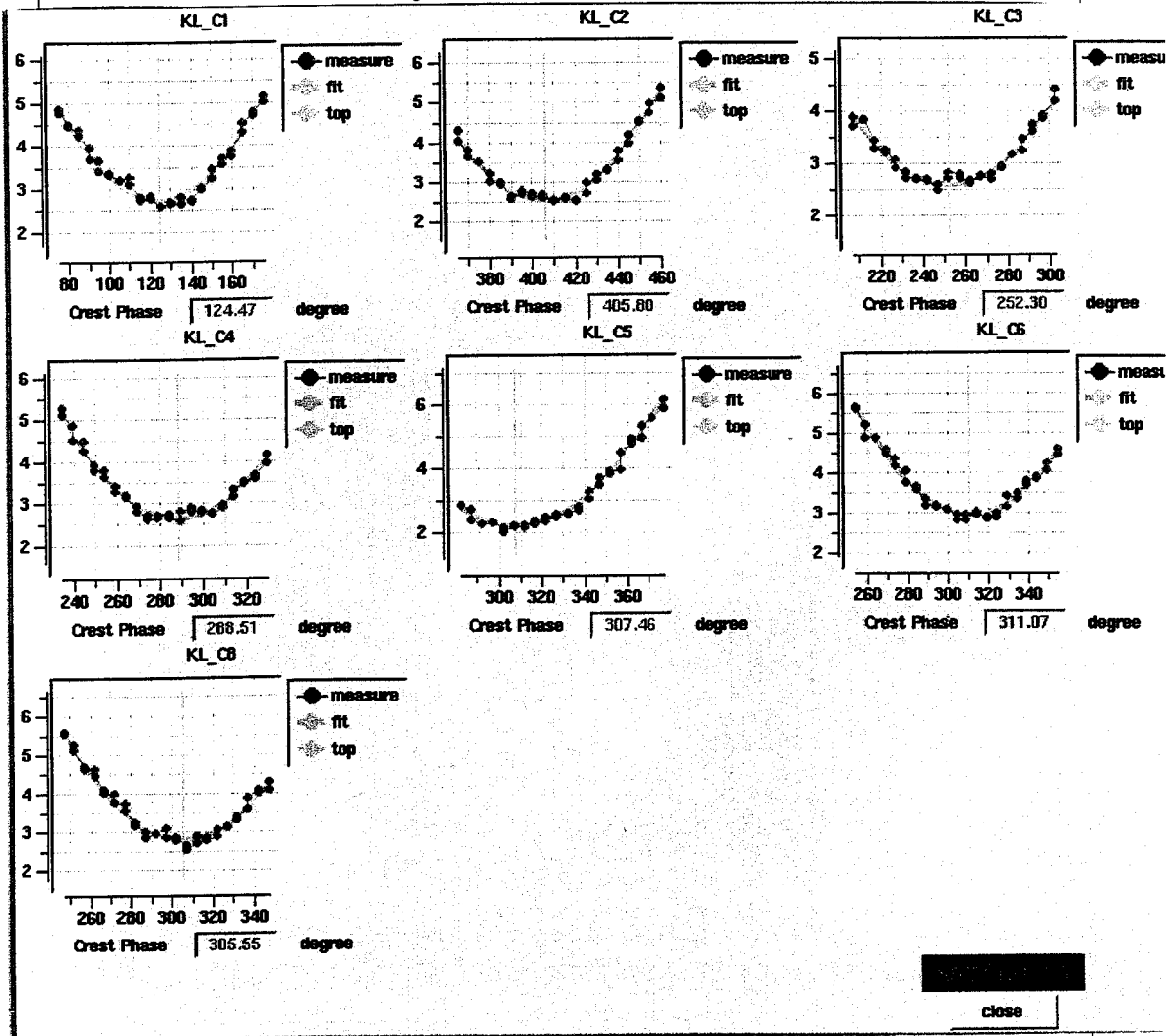
16:30

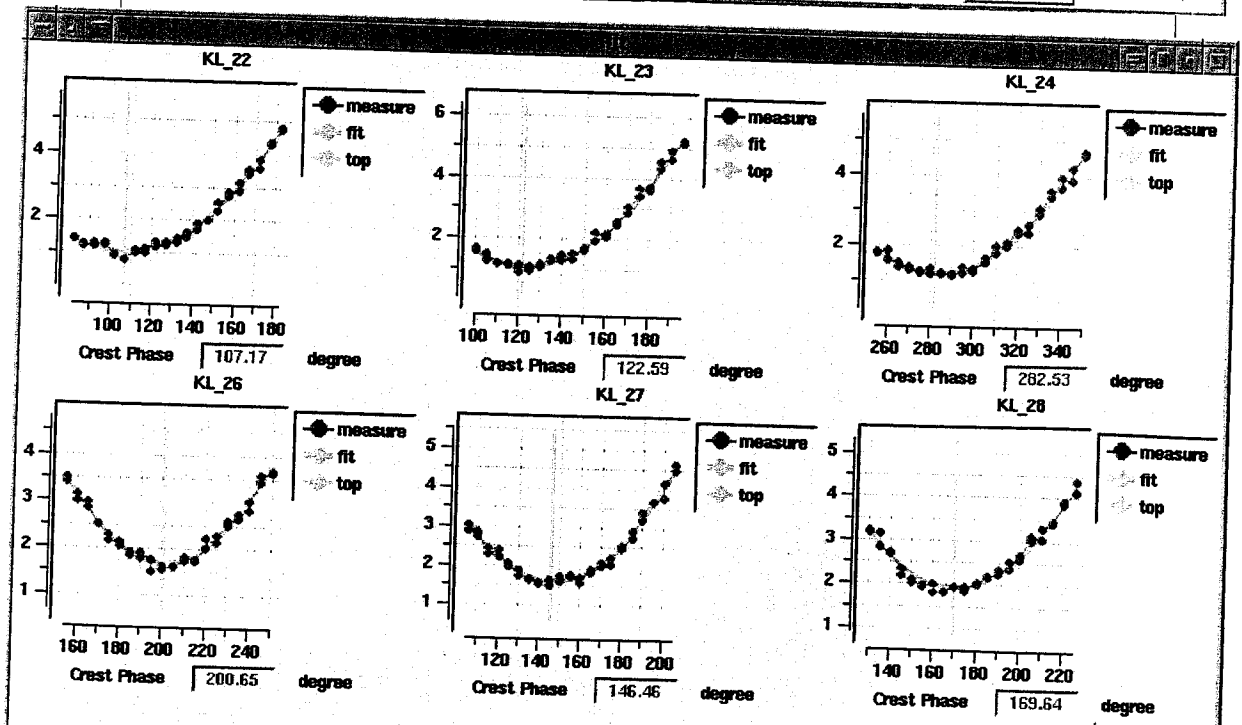
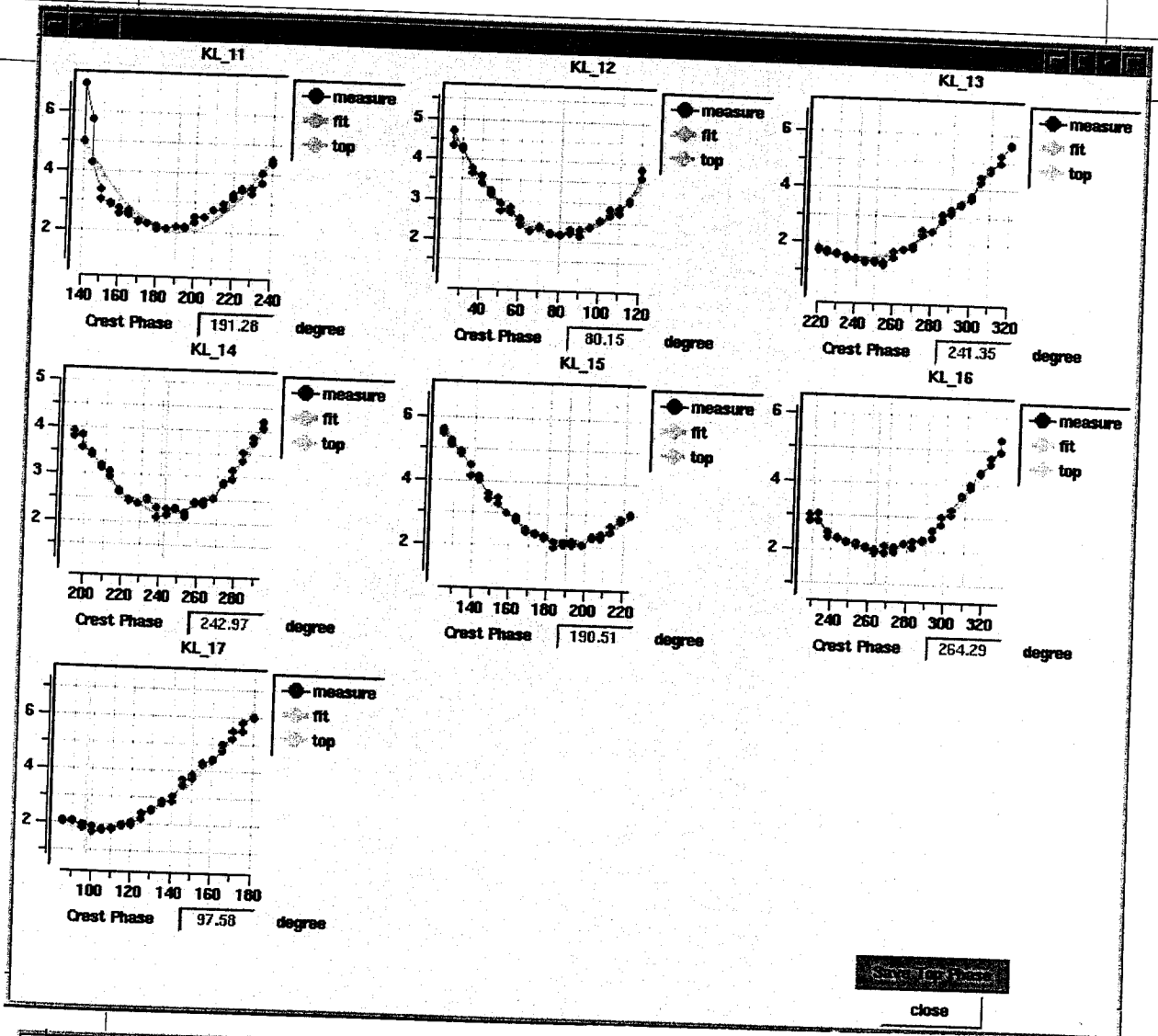
~~17:30~~

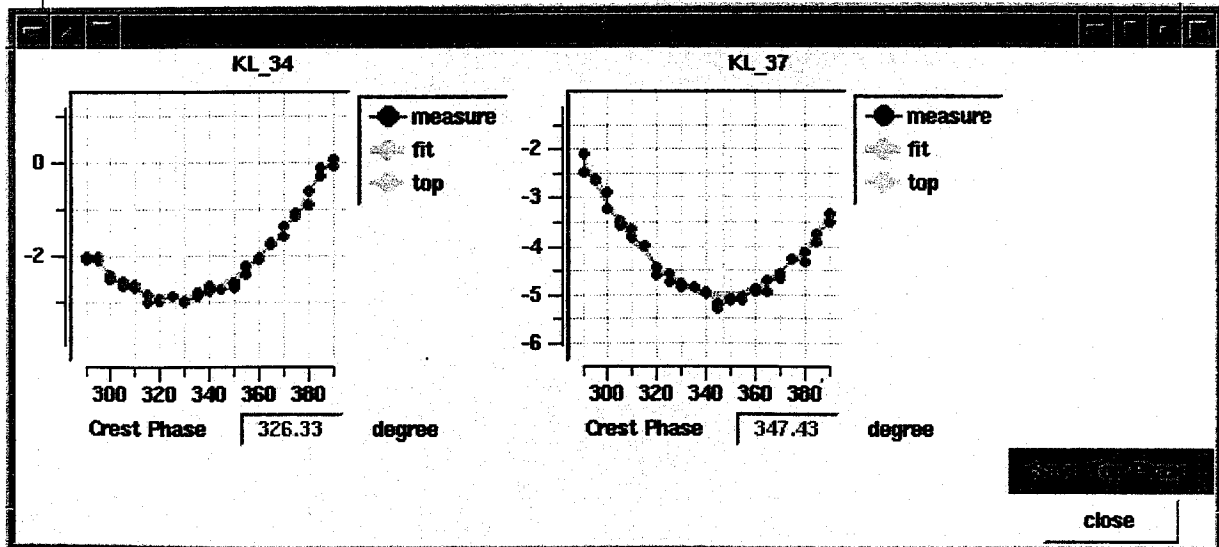
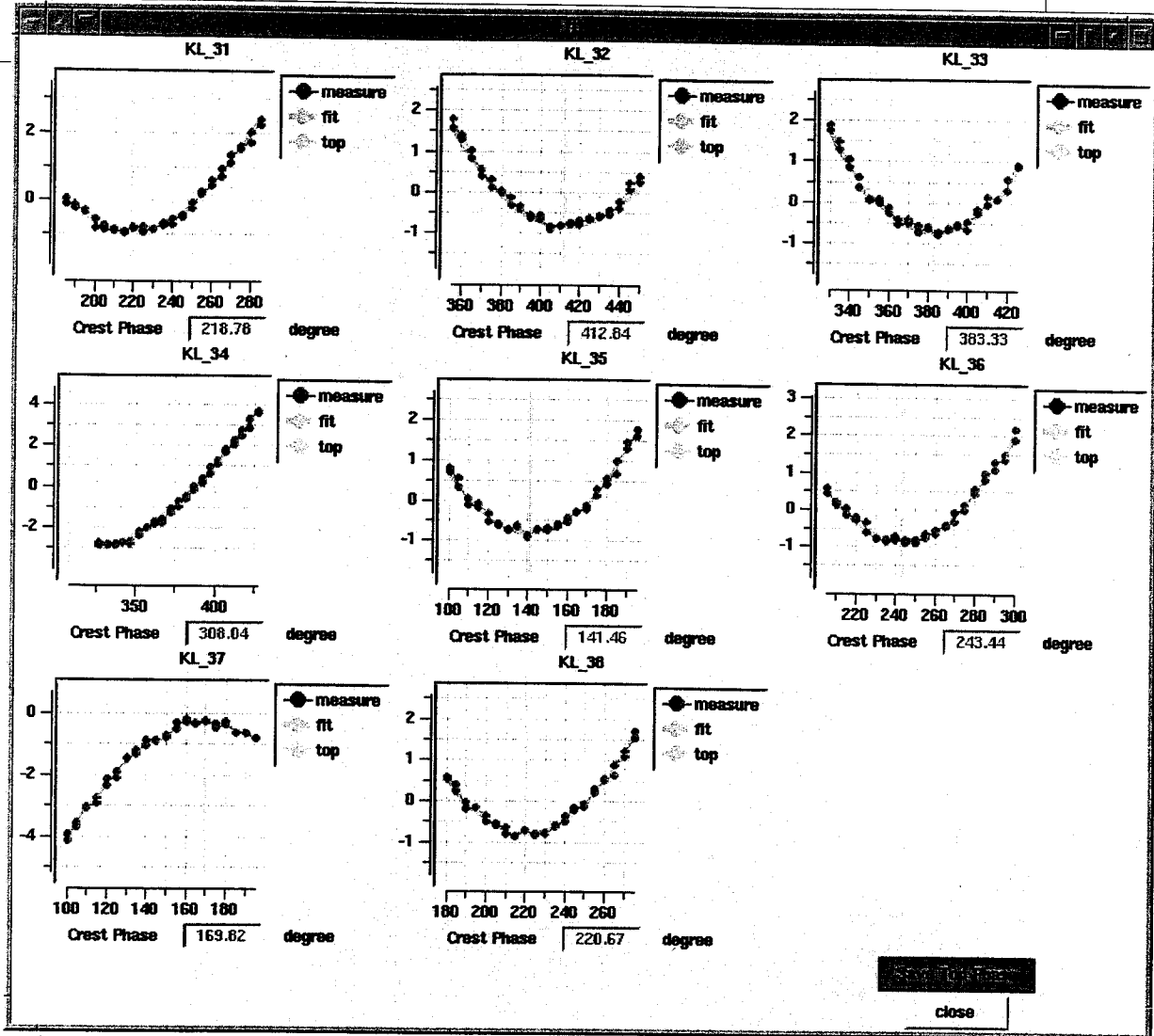
SC-GI-H and E-G 2ポット 位置合わせ 各1/2nd E-GのPhase 合わせ
 \rightarrow Beam Energy = 7.58 GeV (7.5 GeV)

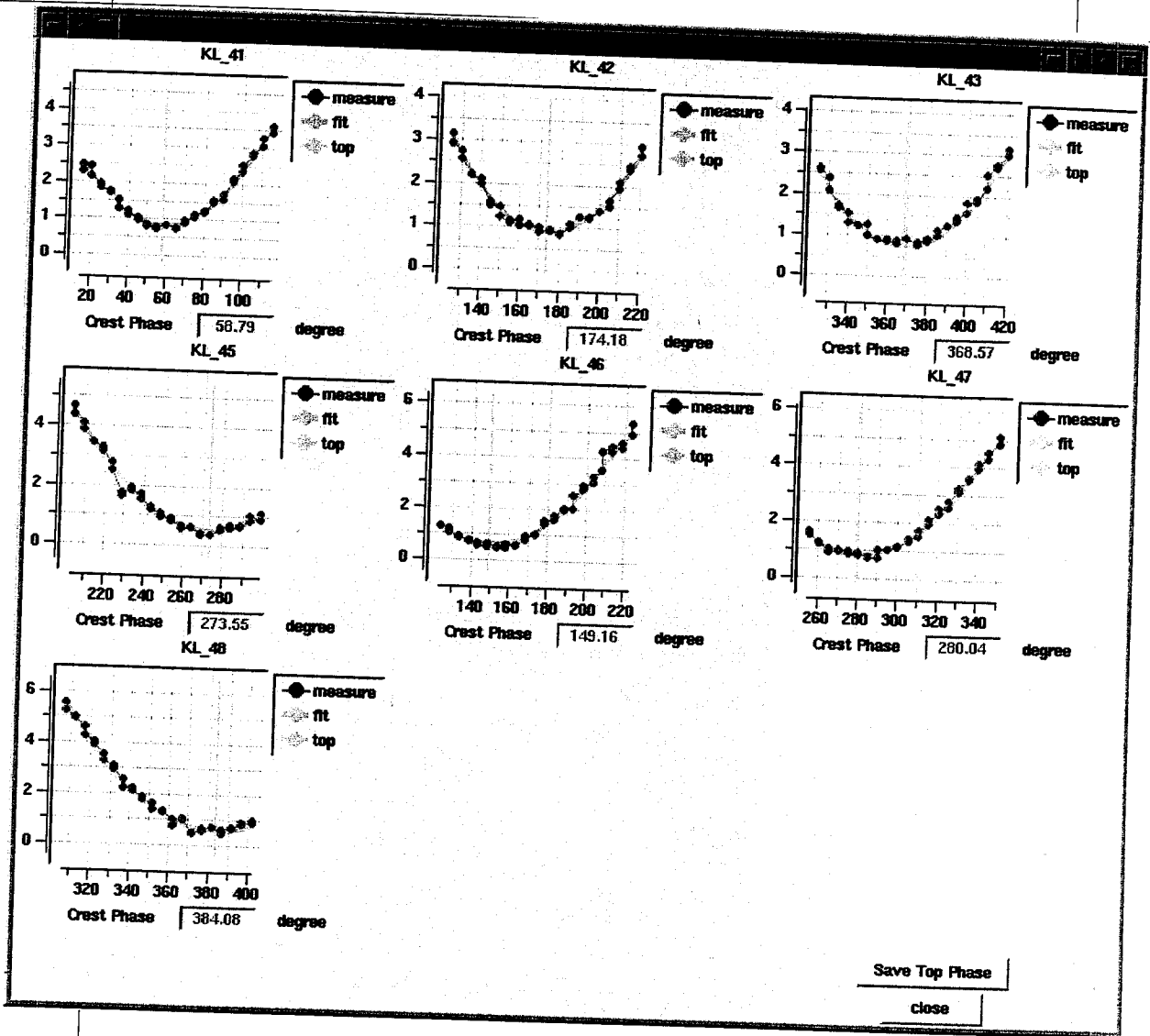
17:30

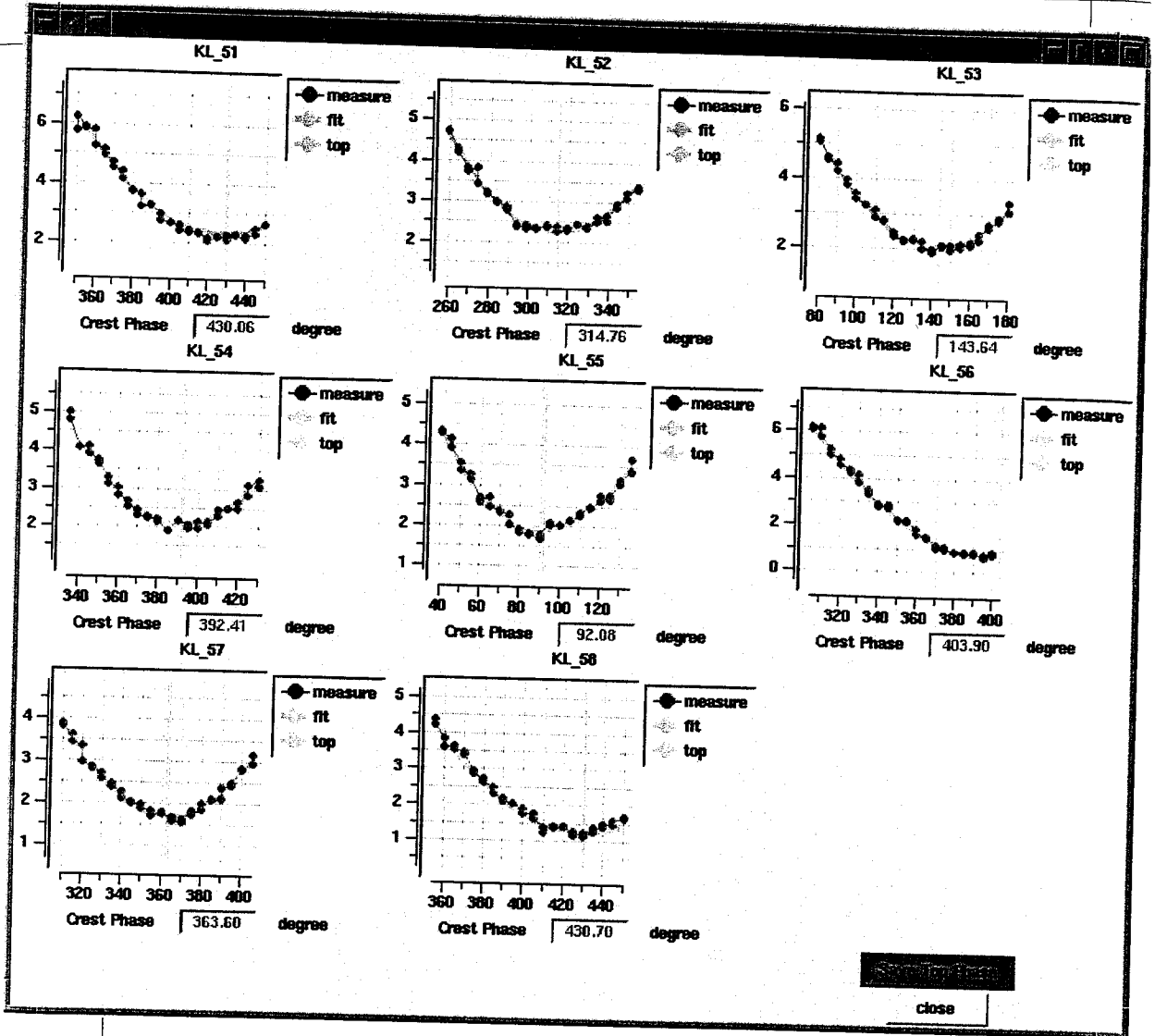
C-sector Phasing





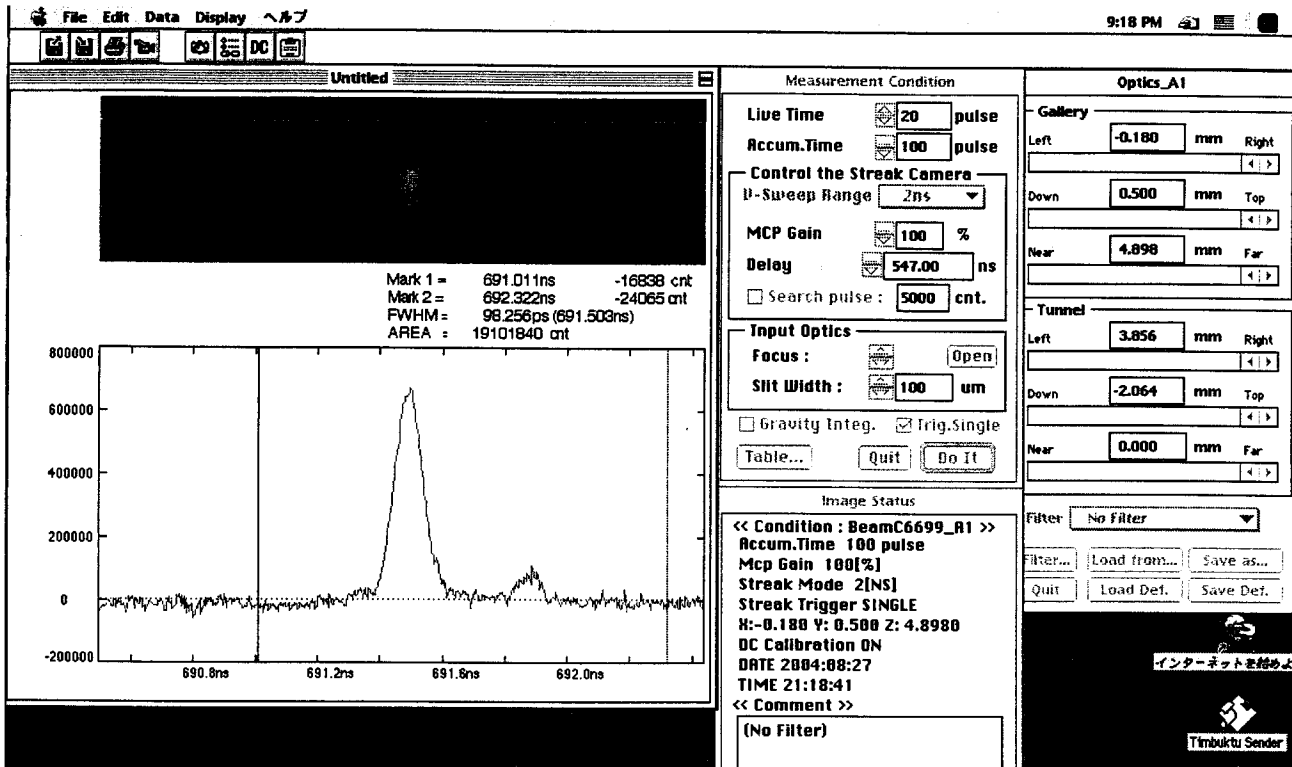




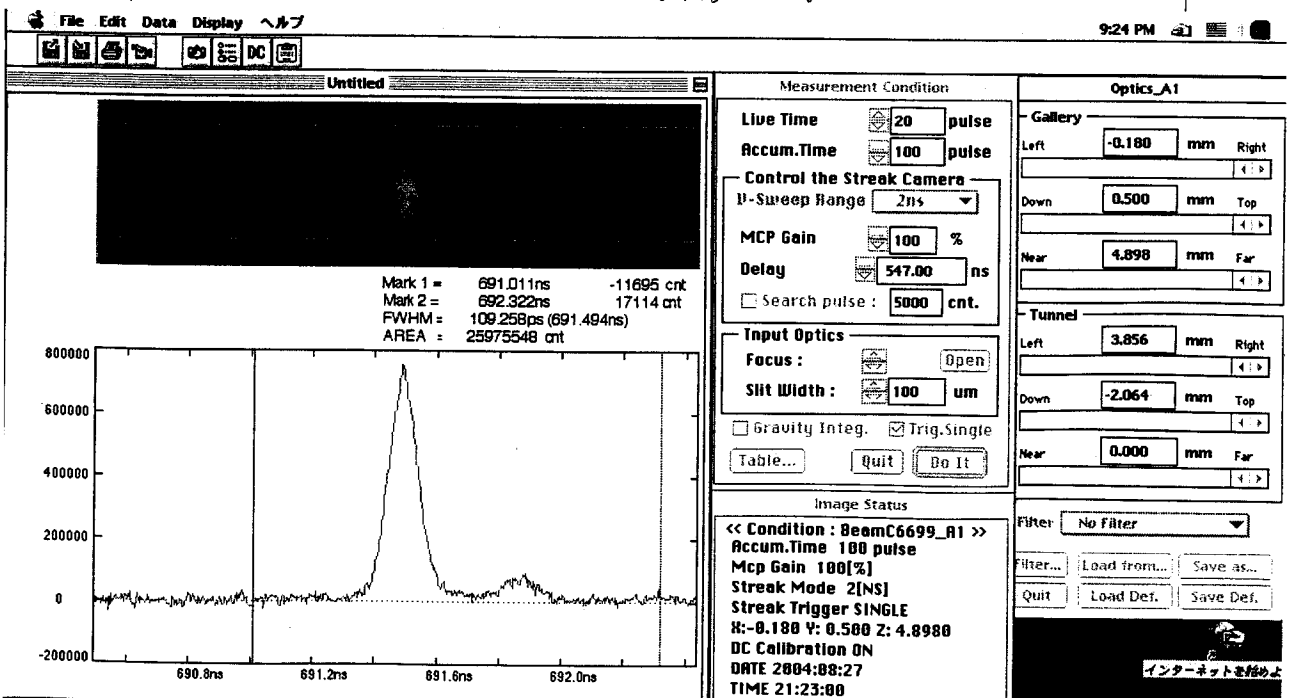


203

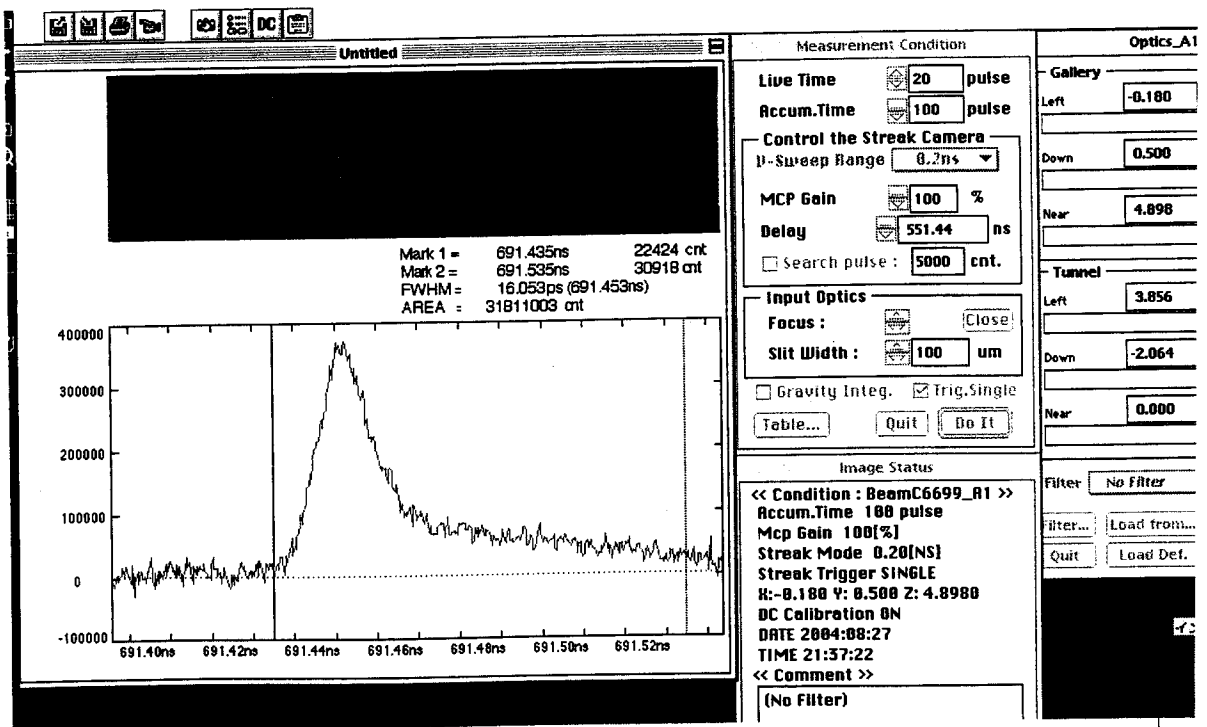
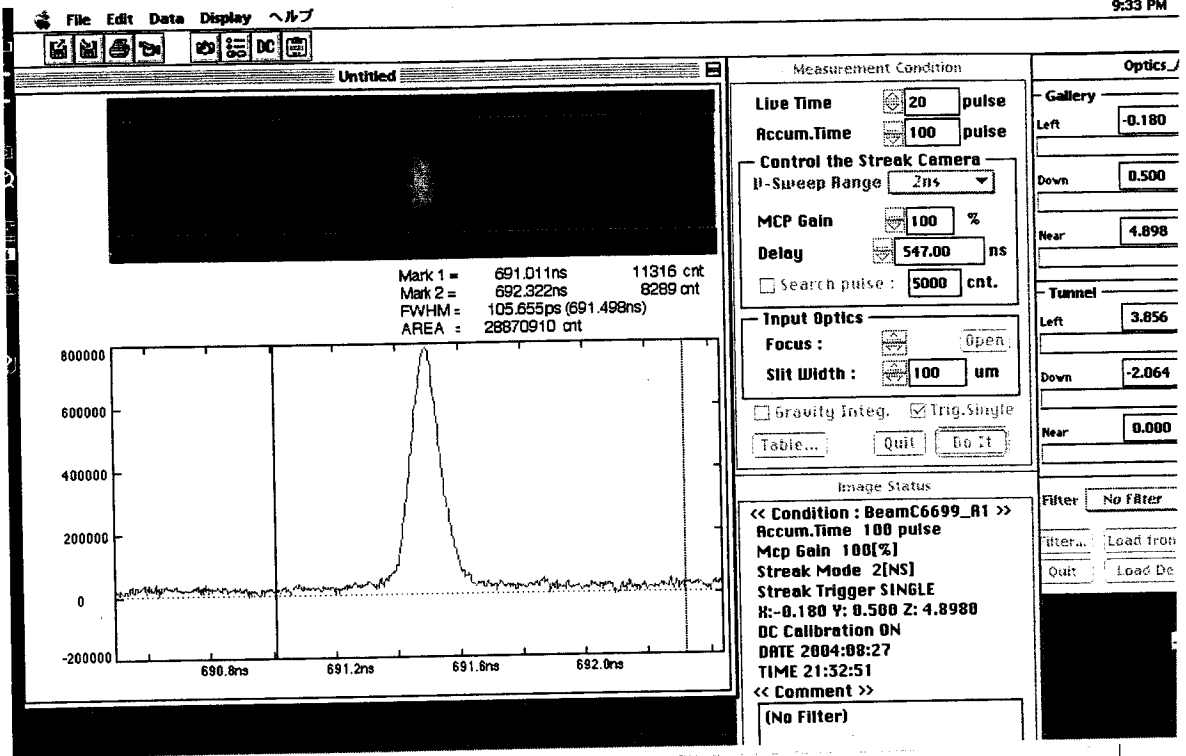
エネルギー幅をせまくする方に調整したとき。
 SHB1 16.2 SHB2 167.5



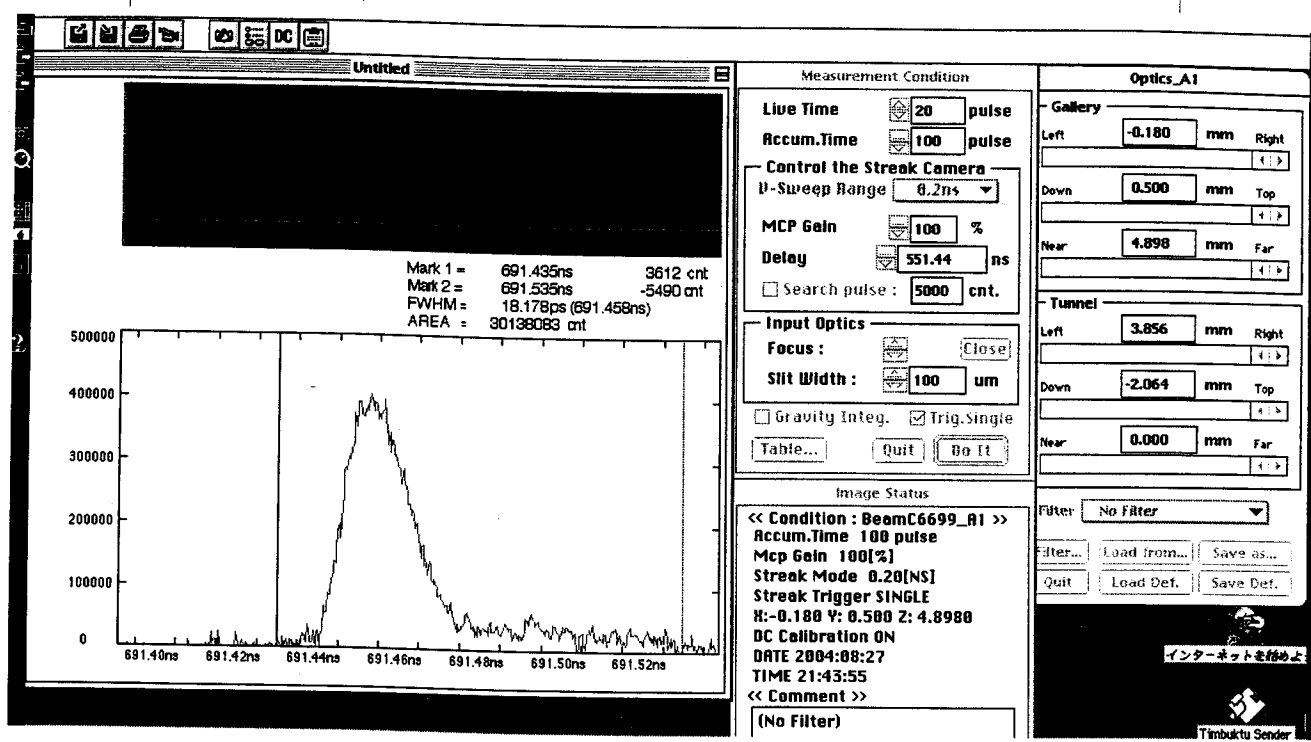
SHB1 17.3 SHB2 168.1



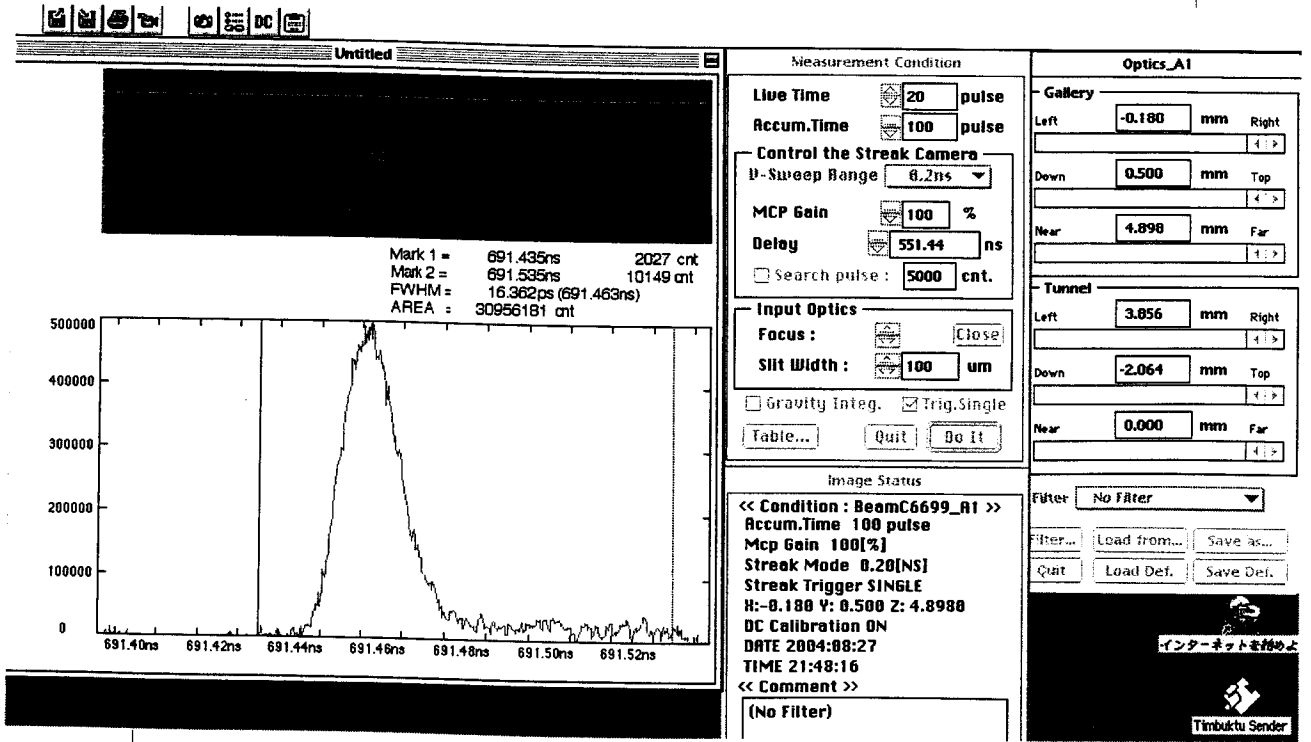
SMB1 18.3
19.5



SHB2. 168.1 → 169.0

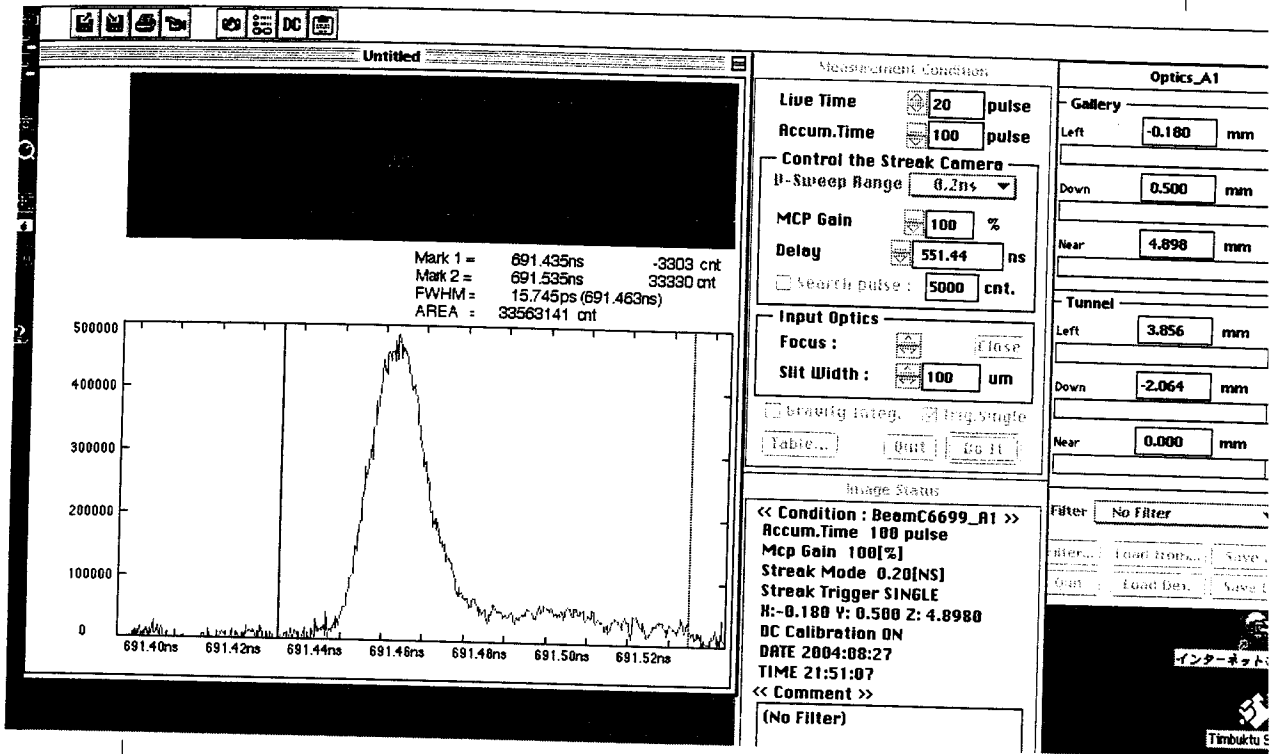


SHB2. 158°

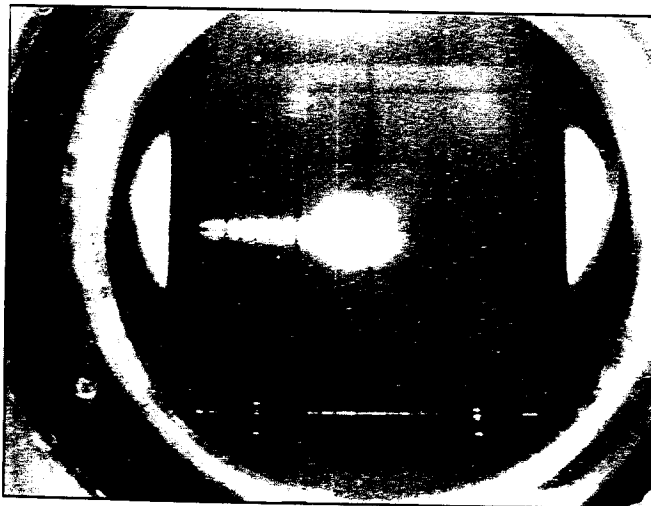


③% 1Hzでも5Hzでもデータtakingの時間がほとんどかわらないのはなぜ?

SHB 2 153°



SHB 2.



エネルフがぶらついている

- ① 700" 8 GeV (たばたま) (5-6 Me Acc)
- ② 昨日の ~~シングル~~ バンチ状態が何か変わったのか? 元値にして ストリックデータが再現したいのか?

207

