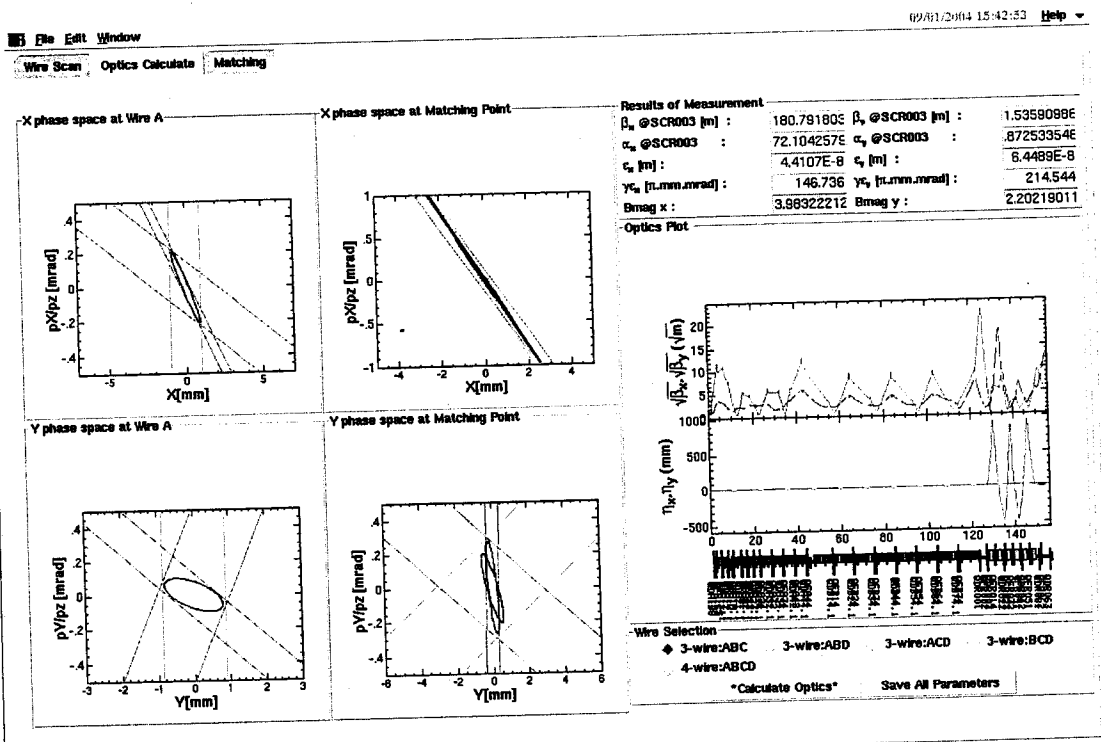
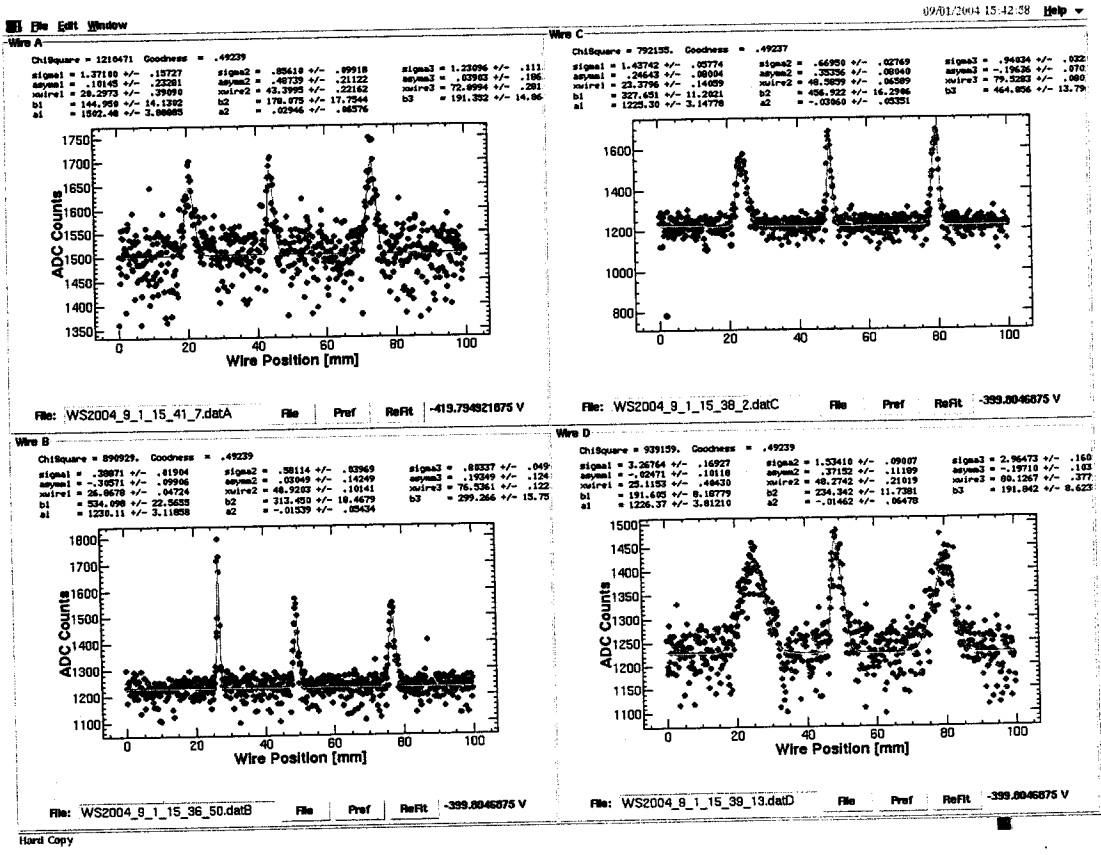
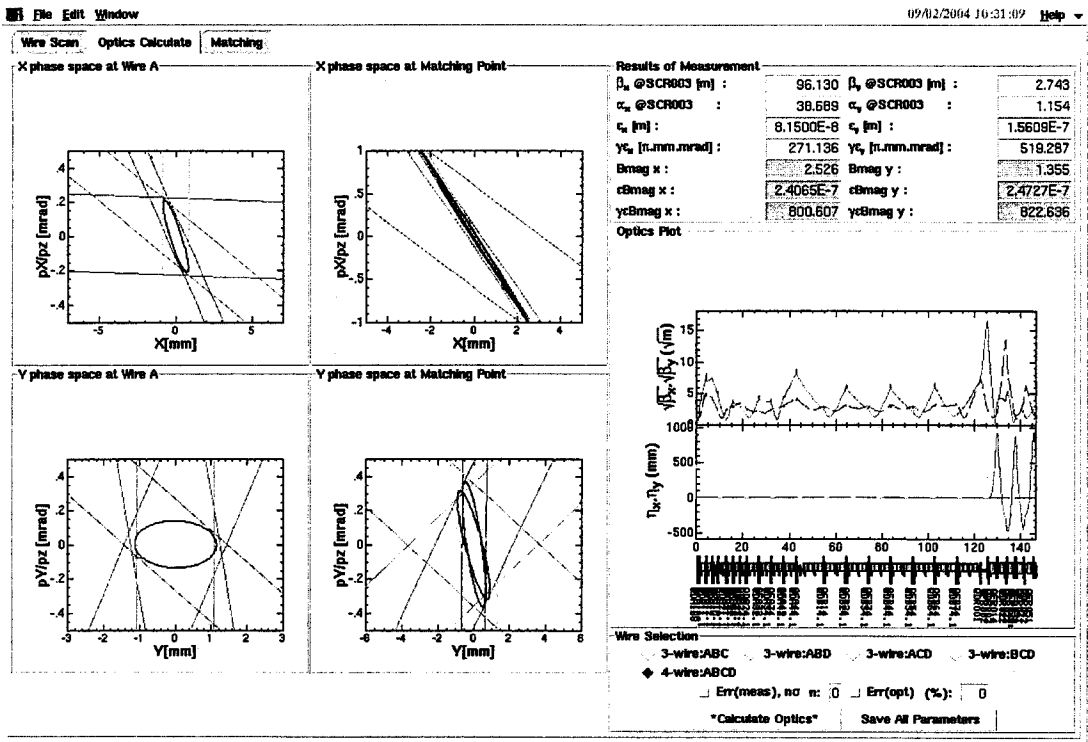
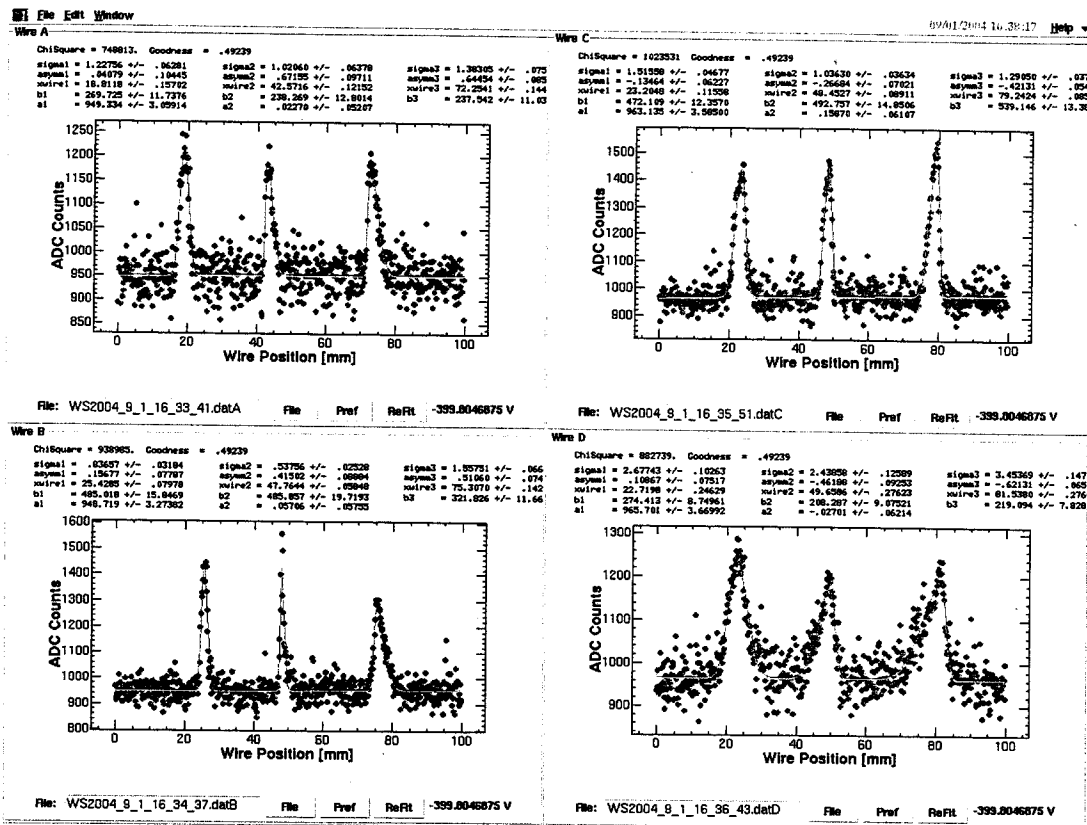


2 bunches a lot only matching 7-12m



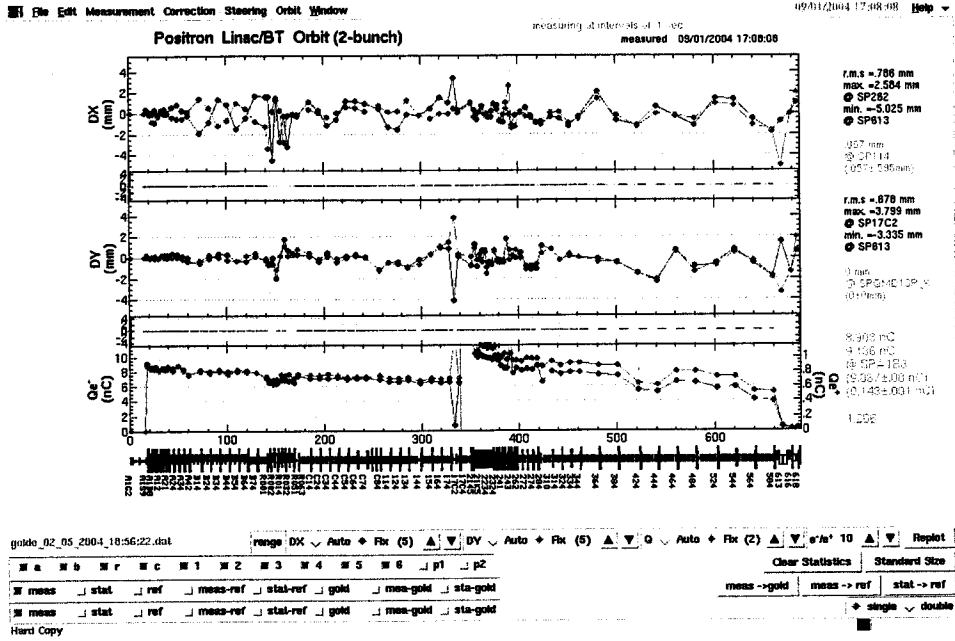
Qmag values were SAVED to /data1/KEKB/Wire/LINAC/sector/B/position/data/Qvalue/qname_2004_9_1_14_14_1.dat0

1st only 亦通調整後. Matching 2 wires



Qmag values were SAVED to /data1/KEKB/Wire/LINAC/sectorB/position/data/Qvalue/qname_2004_9_2_10_30_39.dat0

手動調整 (マフングでのデータは使わないことにした。7+3=10)



BPM 調整

17:20

ステアリング手動で再調整

18:15

A1の出口でのエネルギー測定

BX-A1-22

SP-A1-M

Two Bunch Mode

~~9339~~ Trigger Delays KL - A1 - RF

93431 ns

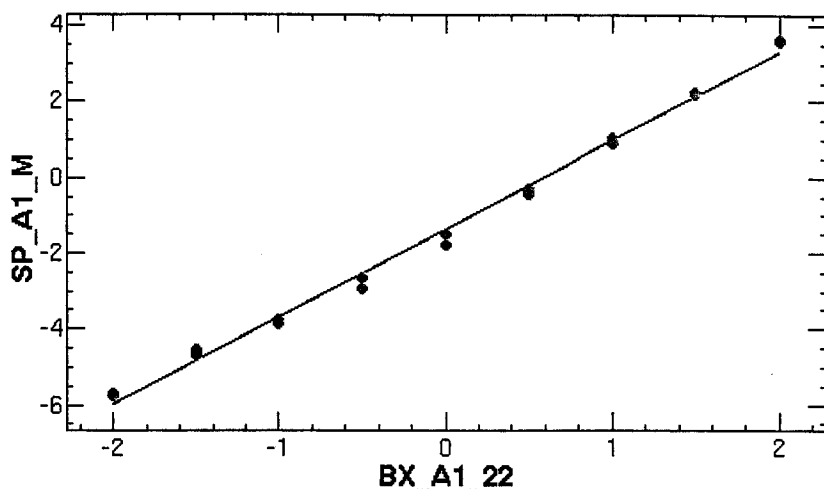
File Edit Window

09/01/2004 18:08:22 Help

ChiSquare = .99014 Goodness = .45296

a = 2.32610 +/- .04542

b = -1.3422 +/- .05863



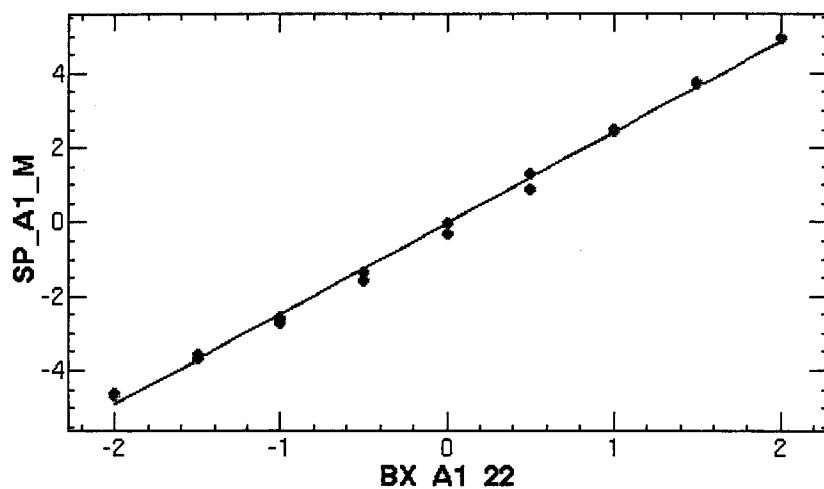
Function = (b+(a x))

Energy at A1_B8 : 6.470057177249475 MeV

ChiSquare = .58828 Goodness = .45296

a = 2.43998 +/- .03501

b = -.03956 +/- .04520



Function = (b+(a x))

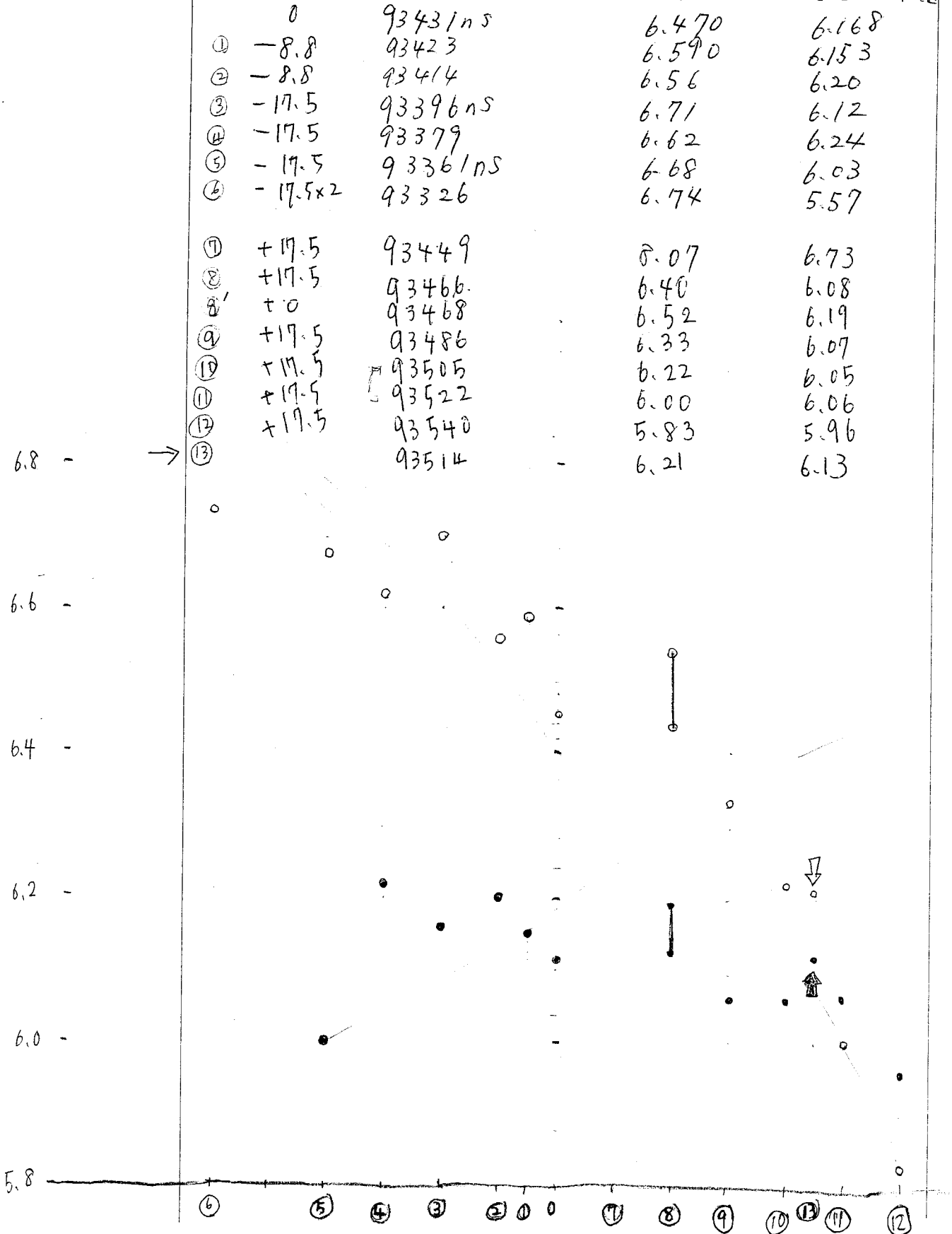
Energy at A1_B8 : 6.168074918544526 MeV



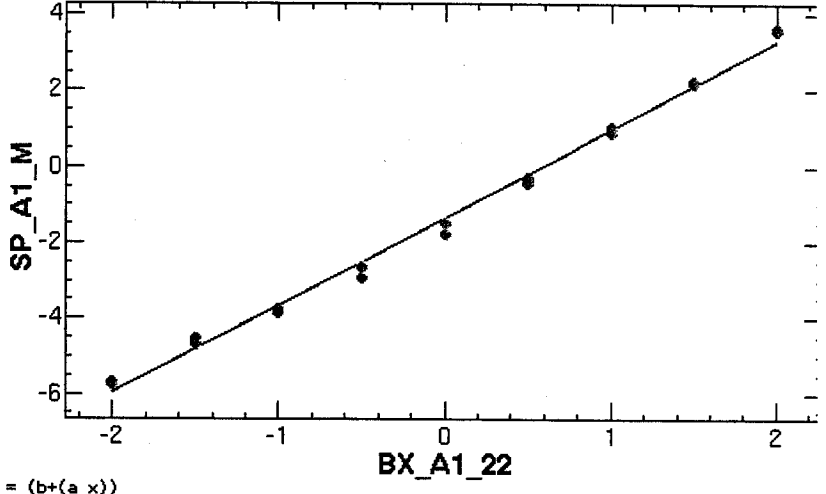
KLAIRI

○ 1 bunch

● 2 bunch



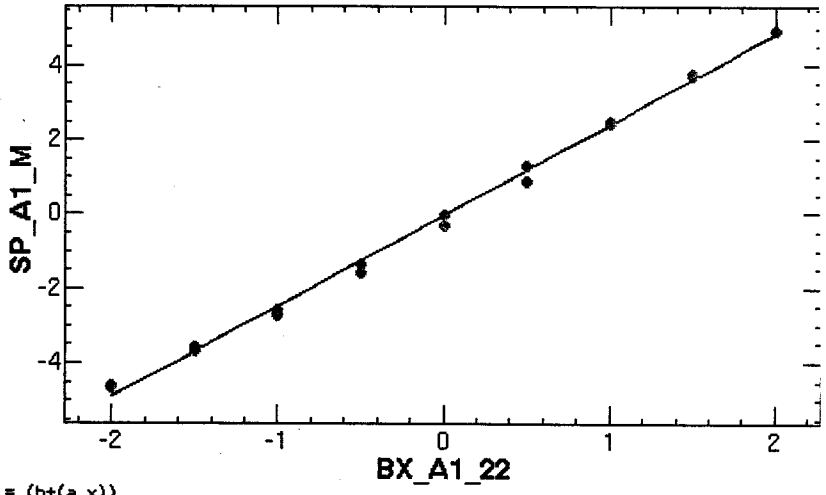
ChiS	ChiS	ChiSqua	ChiSq	ChiS	ChiSquare = .99014	Goodness = .45296	
=	a = :	a = :	a = 2.2	a = 2	a = :	a = 2.32610 +/- .04542	b = -1.3422 +/- .05863
(6)	(5) (4)	(3)	(2)	(1)	(0)		



Func Func Functi Functi Functi Function = (b+(a x))

Energy at A1_B8 : 6.470057177249475 MeV

ChiS	ChiS	ChiSq	ChiSq	ChiSq	ChiSquare = .58828	Goodness = .45296	
a =	a =	a = 2.	a = 2.	a = 2.	a = 2.43998 +/- .03501	b = -.03956 +/- .04520	



Func Fun Functi Functi Functi Function = (b+(a x))

Energy at A1_B8 : 6.168074918544526 MeV

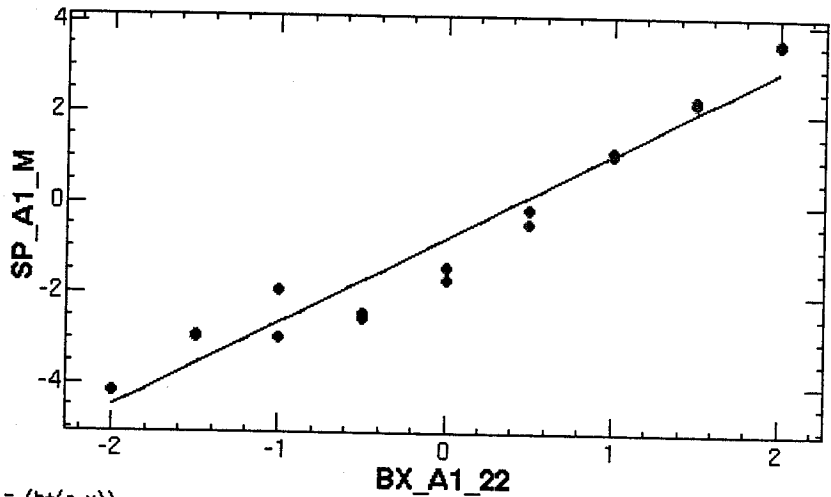
Hard Copy

~~43514~~ 6.21 6.13 ↓ 5%
 无值から 83ns RF 遅らせ。 正確に 1.2% 差

ChiSqua ChiSqua ChiSqua ChiSq ChiSquare = 5.38243 Goodness = .45296
 a = 2.5 a = 2. a = 2.3 a = 2 a = 1.86378 +/- .10589

b = -.77194 +/- .13671

- 12
- 11
- 10
- 9
- 8
- 7

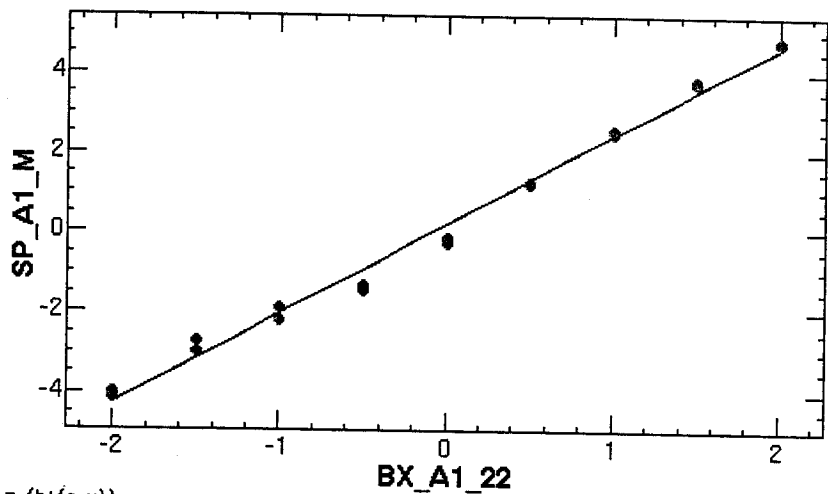


Function = (b+(a x))

Energy at A1_B8 : 6.074972949287739 MeV

ChiSqua ChiSqua ChiSqua ChiSq ChiSquare = 1.32226 Goodness = .45296
 a = 2.4 a = 2. a = 2.4 a = a = 2.23552 +/- .05249

b = .18294 +/- .06776



Function = (b+(a x))

Energy at A1_B8 : 6.732224467125424 MeV

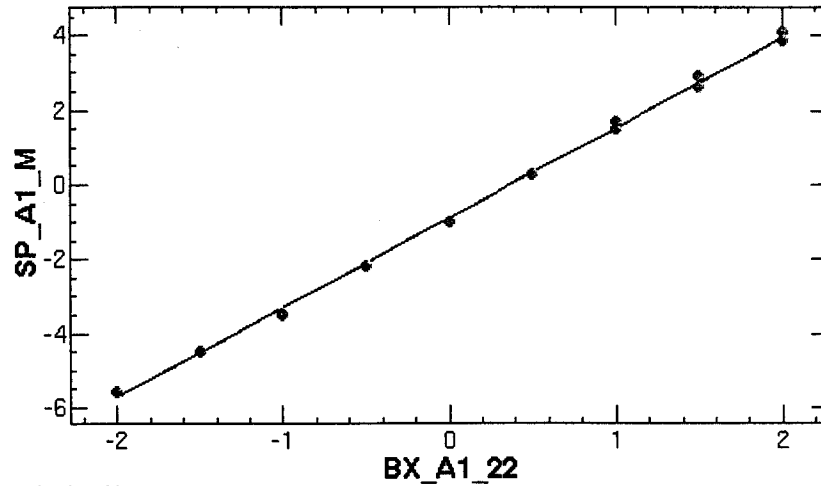
File Edit Window

09/01/2004 19:23:45 Help ▾

ChiSquare = .24912 Goodness = .45296

a = 2.42320 +/- .02278

b = -.89494 +/- .02941



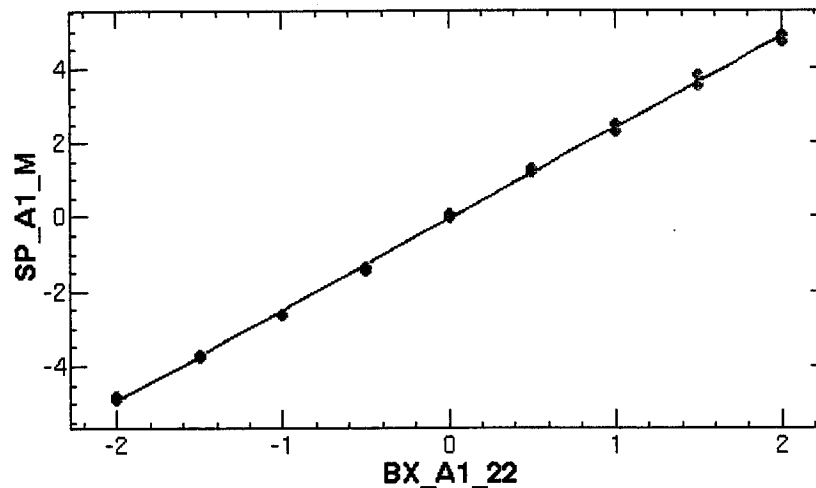
Function = (b+(a x))

Energy at A1_B6 : 6.210795642126116 MeV

ChiSquare = .19504 Goodness = .45296

a = 2.45418 +/- .02016

b = -.06089 +/- .02602



Function = (b+(a x))

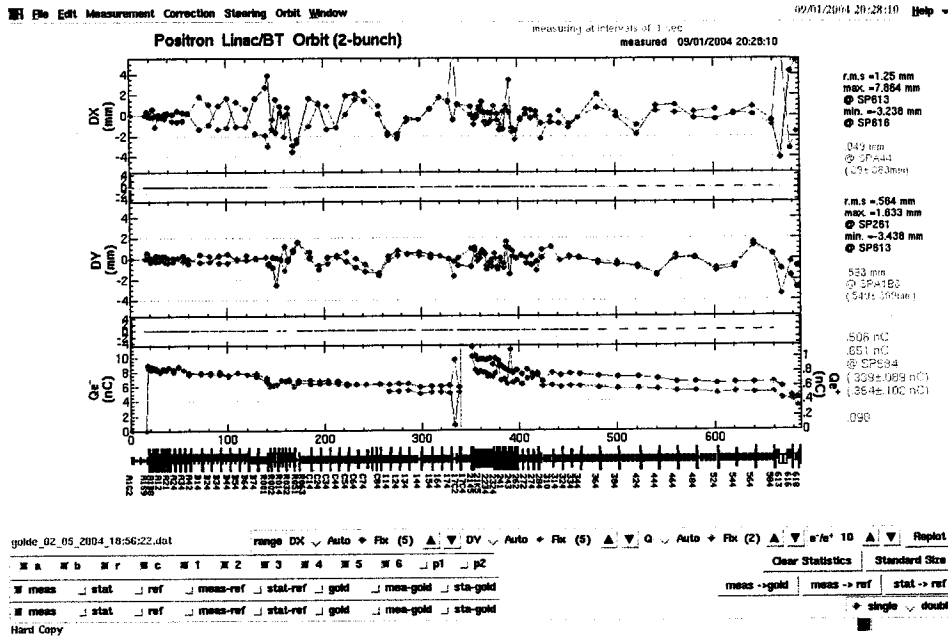
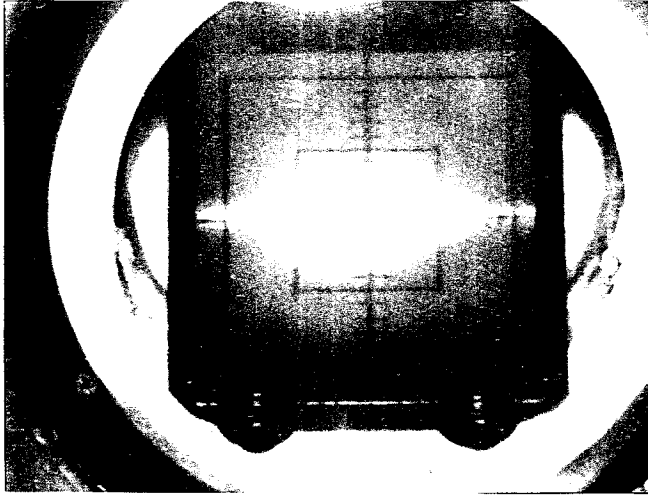
Energy at A1_B6 : 6.132386197716825 MeV

Hard Copy

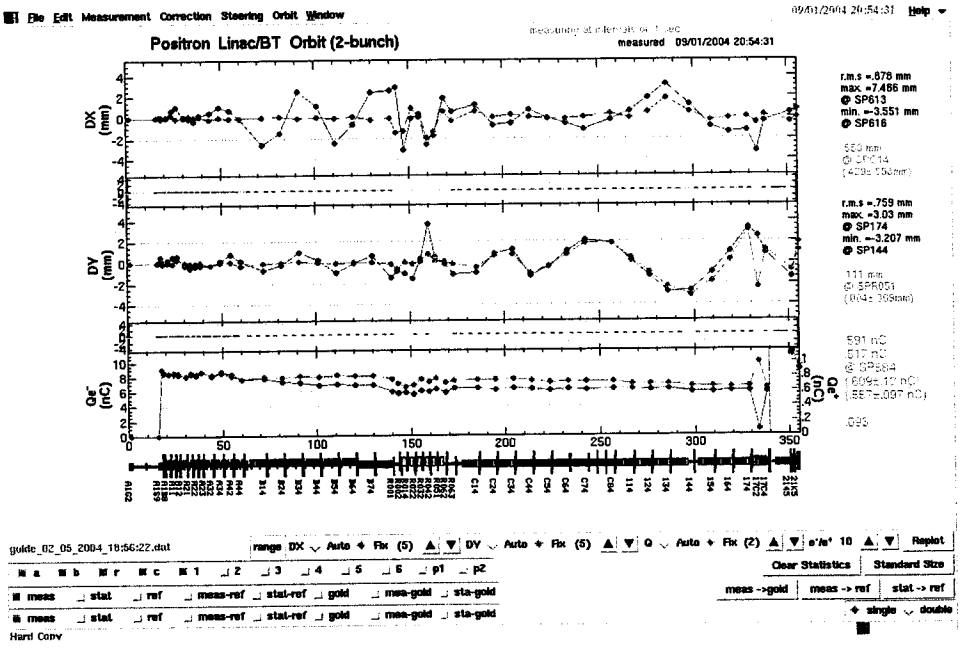


19:45 OVERALL-A 49074ns $\rightarrow \pi \rightarrow 490 \mu s$
 " -B 49105ns $\rightarrow \pi$

SC-R0-31



1st bunch
9.27



C-1
軌道修正
average

