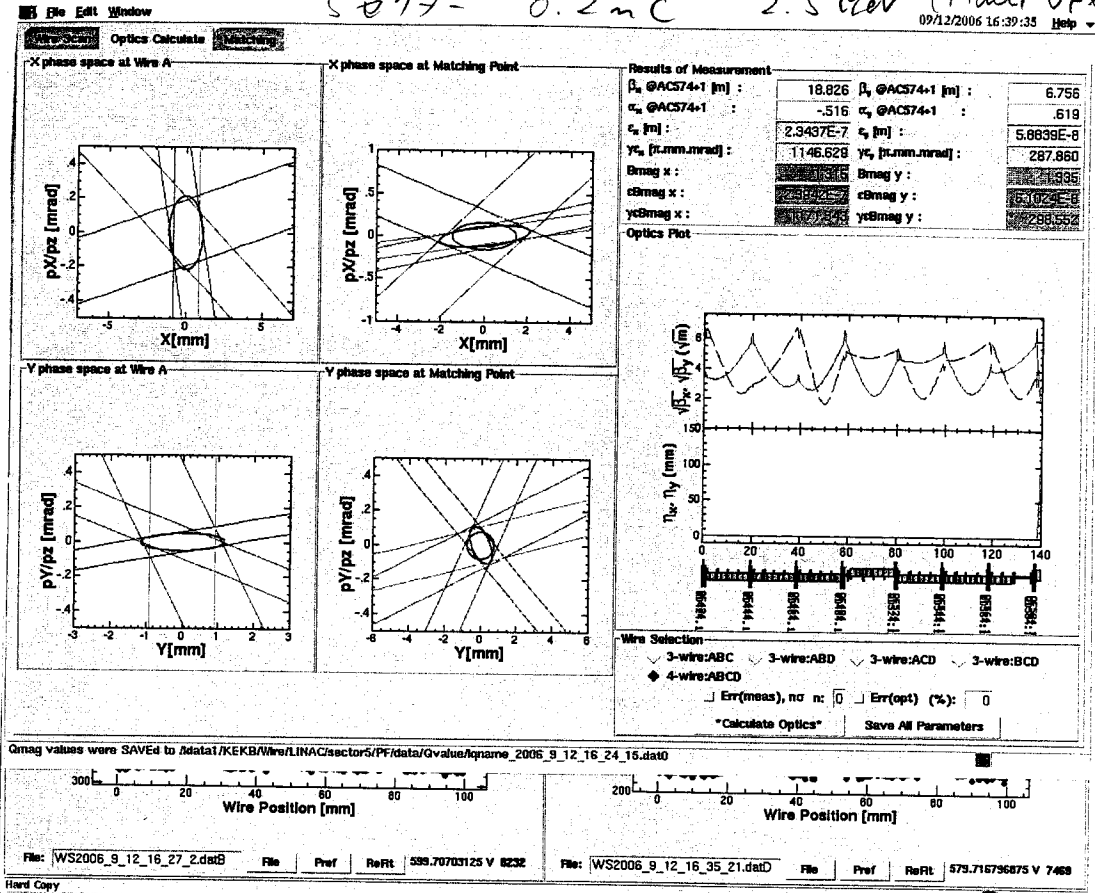
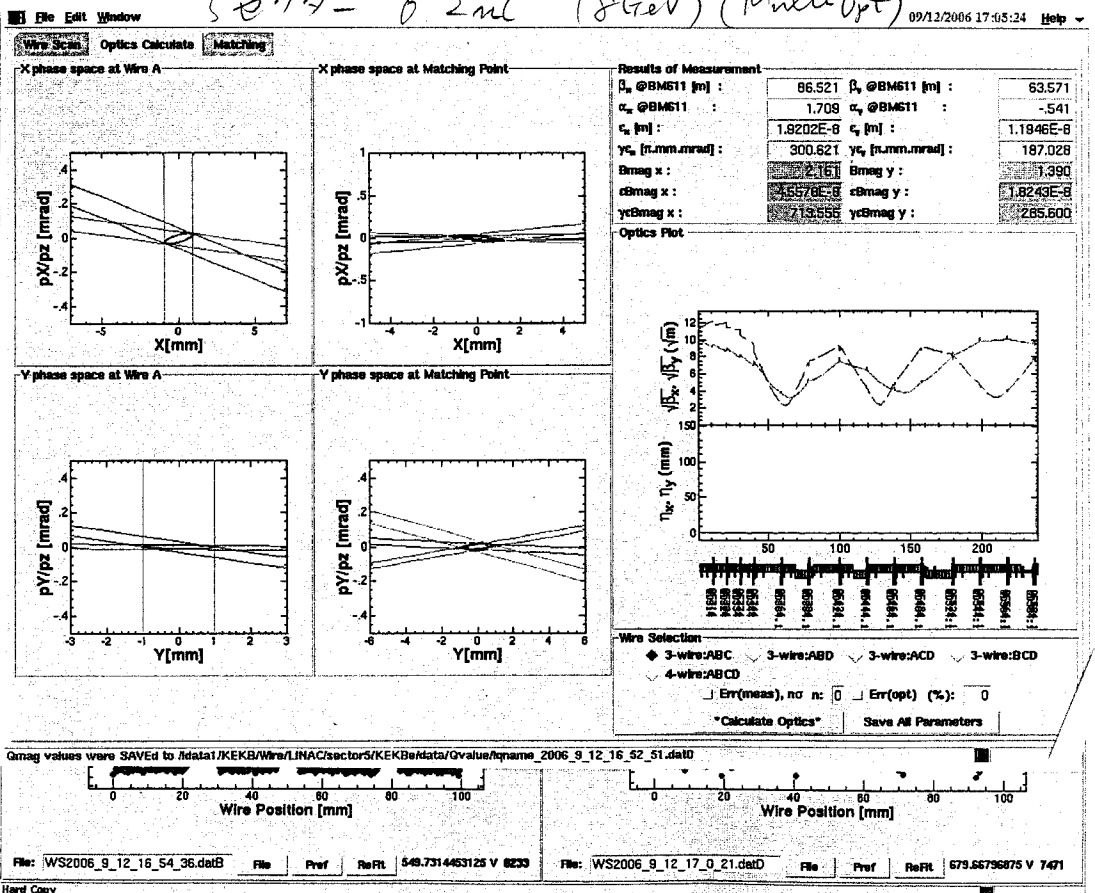


5079 - 0.2 nC 2.5 GeV (Multi Opt)



5079 - 0.2 nC (8 GeV) (Multi Opt)



5 2 7 7 - 1/2 C 2 Ge V (Multi Opt)

File Edit Window 09/12/2006 18:31:21 Help

Wire Scan Optics Calculate Matching

X phase space at Wire A

X phase space at Matching Point

Y phase space at Wire A

Y phase space at Matching Point

Results of Measurement

β_x @BM611 [m] :	73.727	β_y @BM611 [m] :	31.430
α_x @BM611 :	567	α_y @BM611 :	-083
c_x [m] :	6.7215E-8	c_y [m] :	3.7452E-8
yc_x [r.m.m.mrad] :	1052.287	yc_y [r.m.m.mrad] :	586.337
Bmag x :	2.380	Bmag y :	1.010
cbmag x :	4.7815E-8	cbmag y :	4.1949E-8
ycBmag x :	22788.105	ycBmag y :	856.738

Optics Plot

Wire Selection

3-wire:ABC
 3-wire:ABD
 3-wire:ACD
 3-wire:BCD
 4-wire:ABCD

Err(mess), n: 0
 Err(opt) (%): 0

Files Saved to /data1/KEKB/Wire/LINAC/sector5/KEKBa/data/0value/0name_2006_9_12_18_10_45.dat

Wire Position [mm] 0 20 40 60 80 100

File: WS2006_9_12_18_25_3.dat File: WS2006_9_12_18_30_0.dat

Hard Copy

← *Marking*

187

'06/9/13

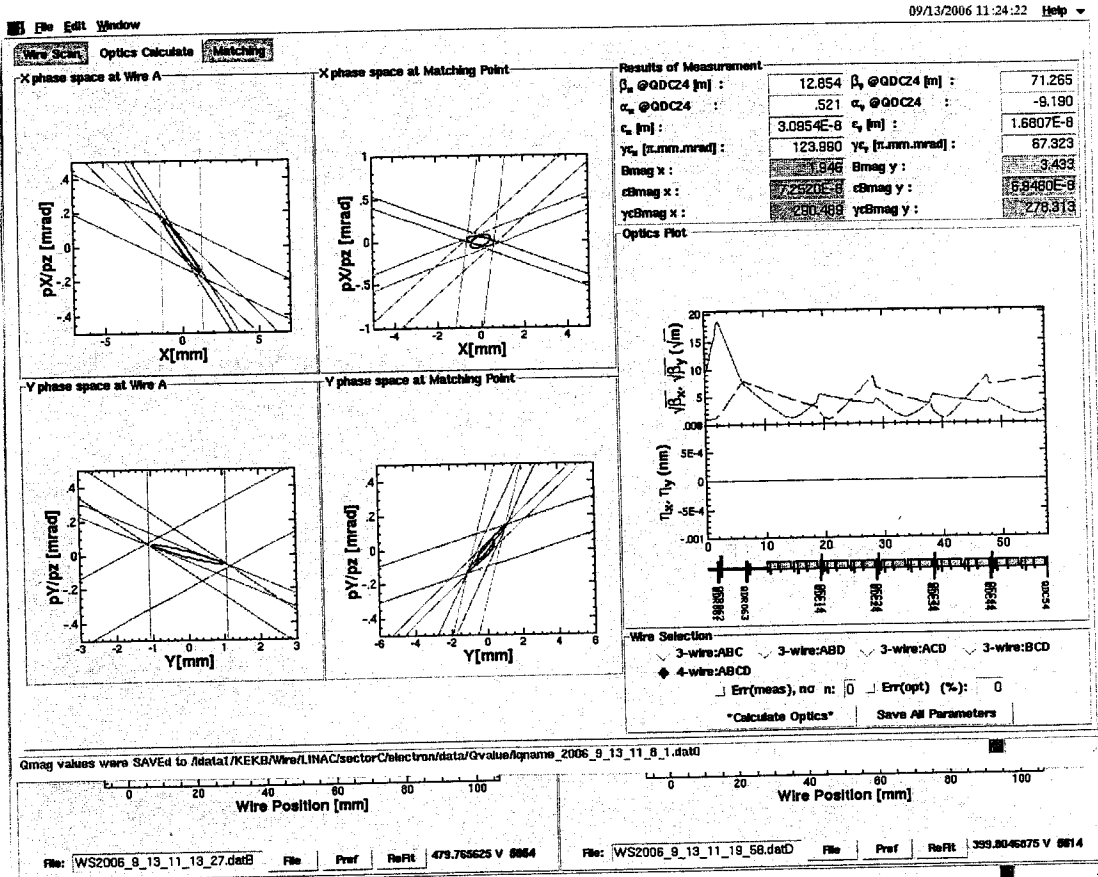
Multi Energy Study

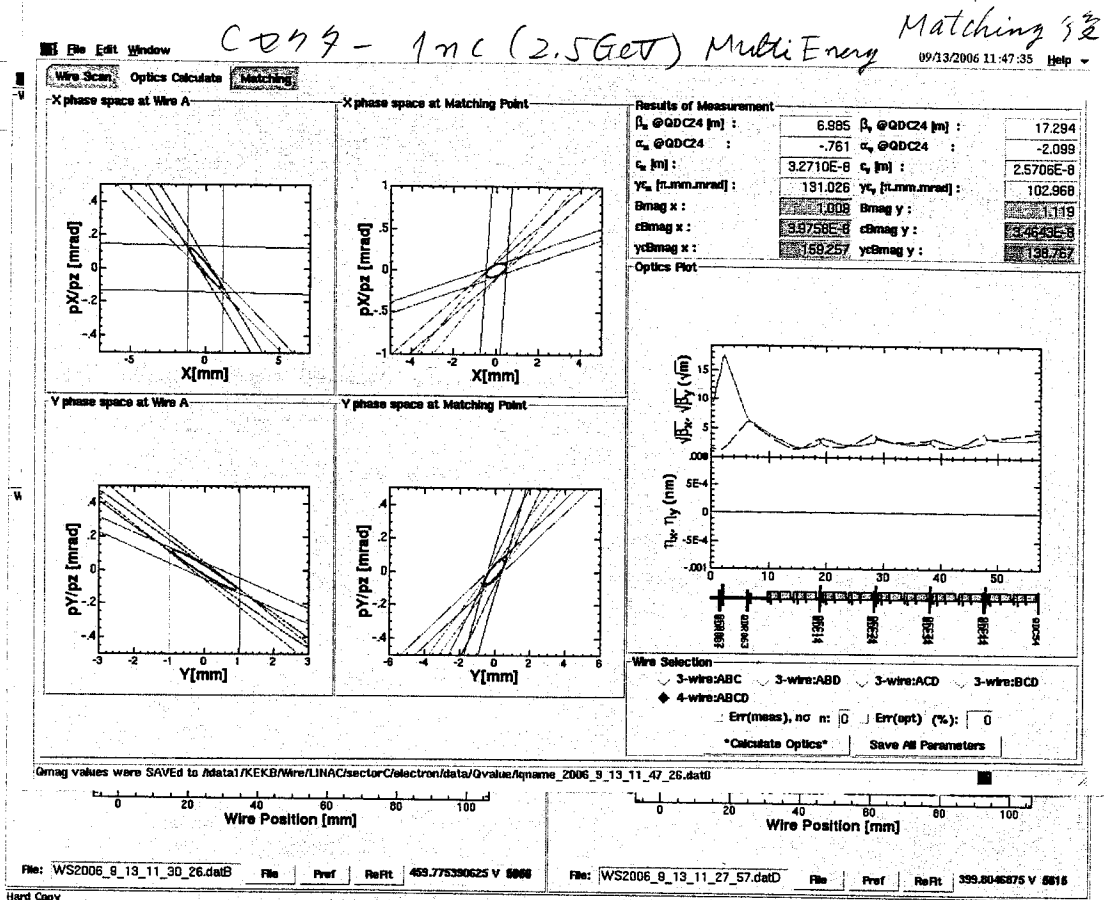
大西 飯田



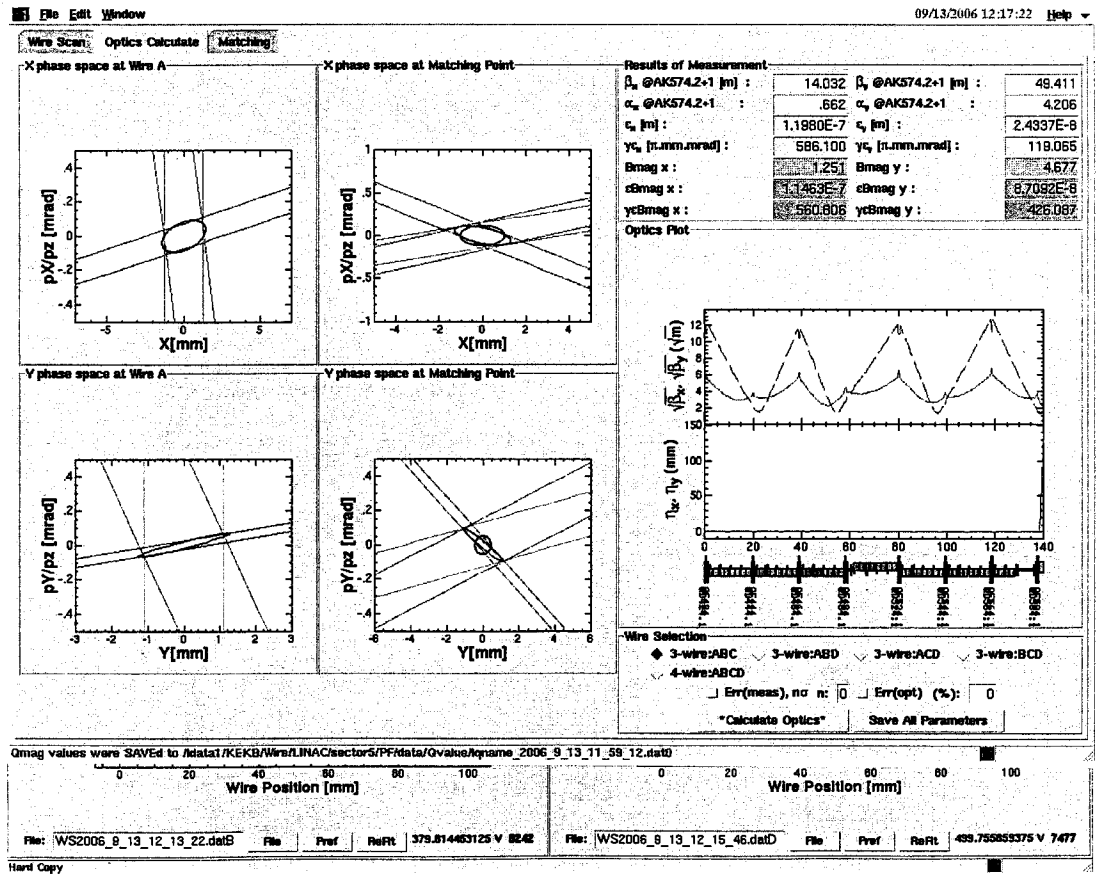
2.5 GeV Multi-Energy 17 Optics 3 set L. (1nC)
C 75-WS i Matching

*2 sector の Q17. θ 1 = set 127. DAC の RB が θ 17
51

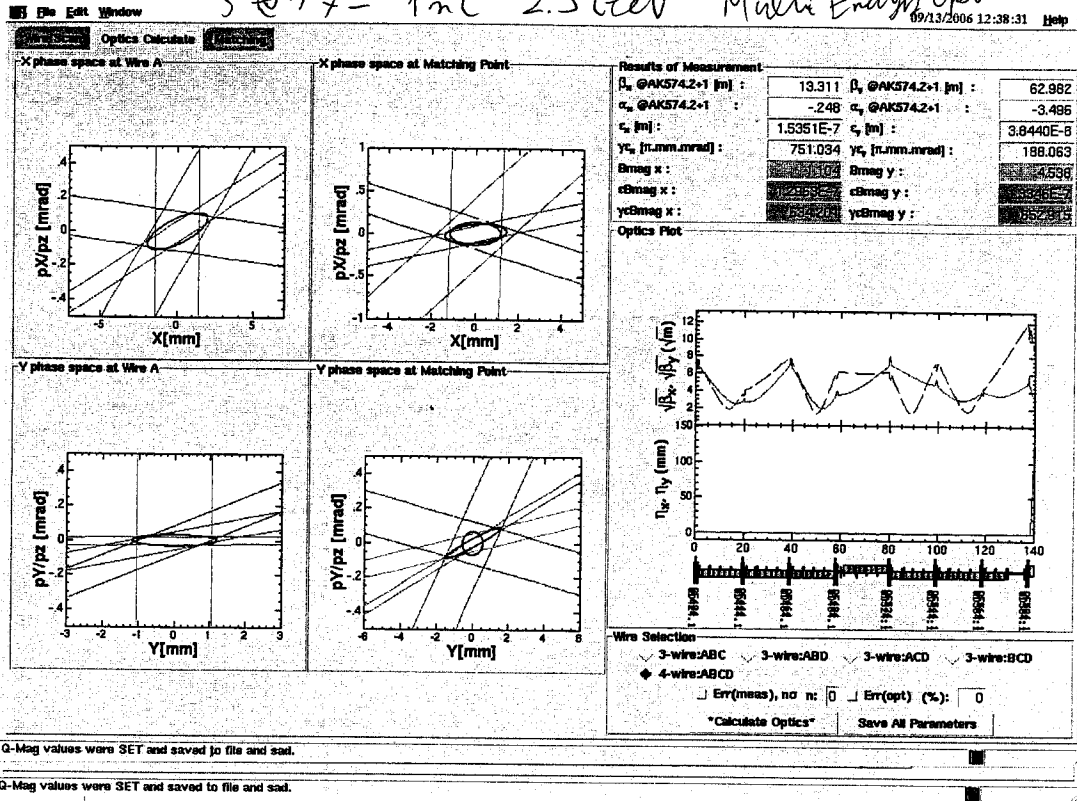




5079 - 1mc (2.5GeV) Multi Opt Matching



← act. 6 T =

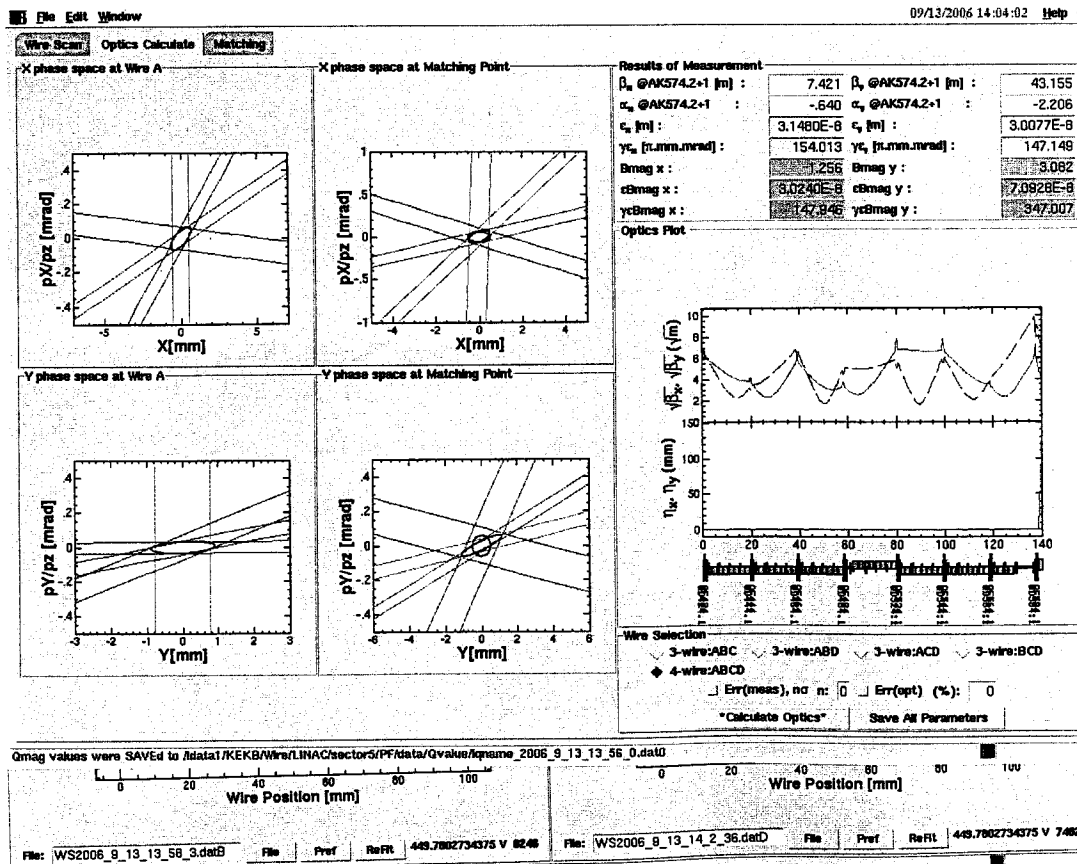


← Matching 後

おまひ
良<2m

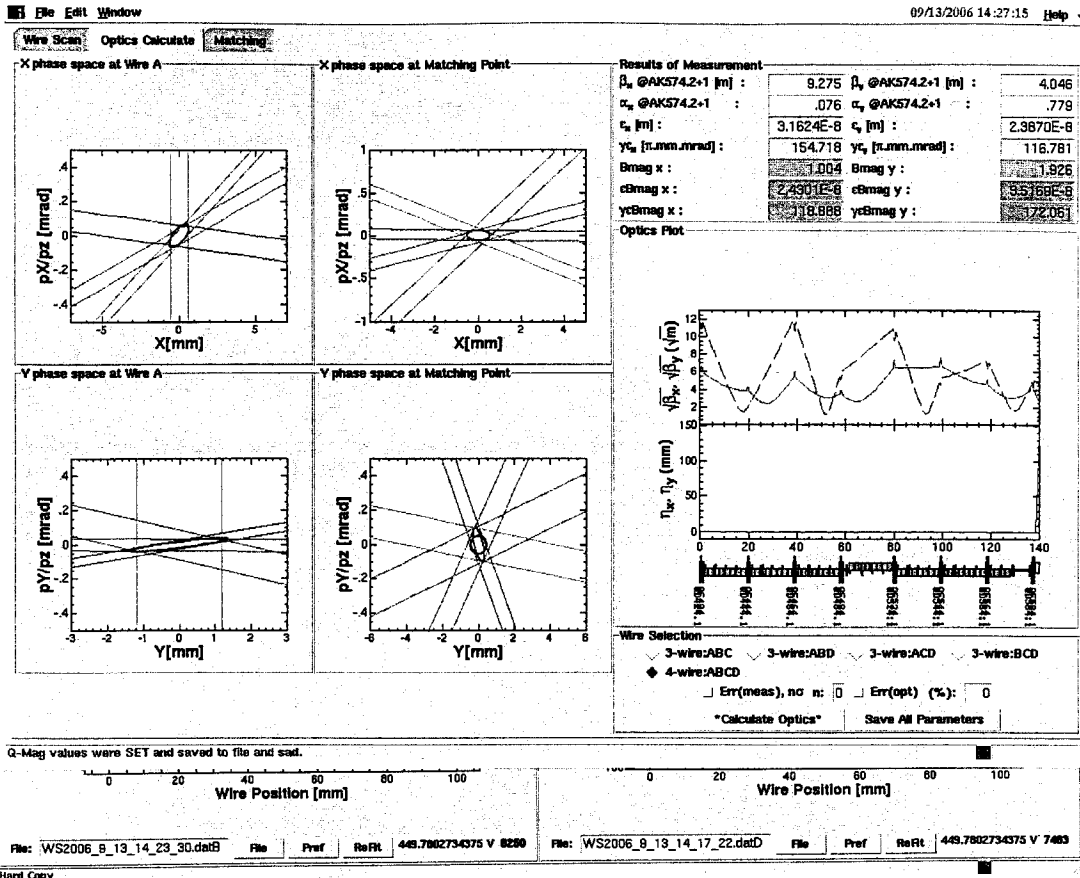
57-2
2ch 1234-2
113

① WS-57-2, SC-57-2 7 2ch.
→ SB-C1234, SB-AB を調整して Energy Spread を 1% に絞った。
② 更に軌道を通じた子軌道を通り易くした。 → 1% に絞った。



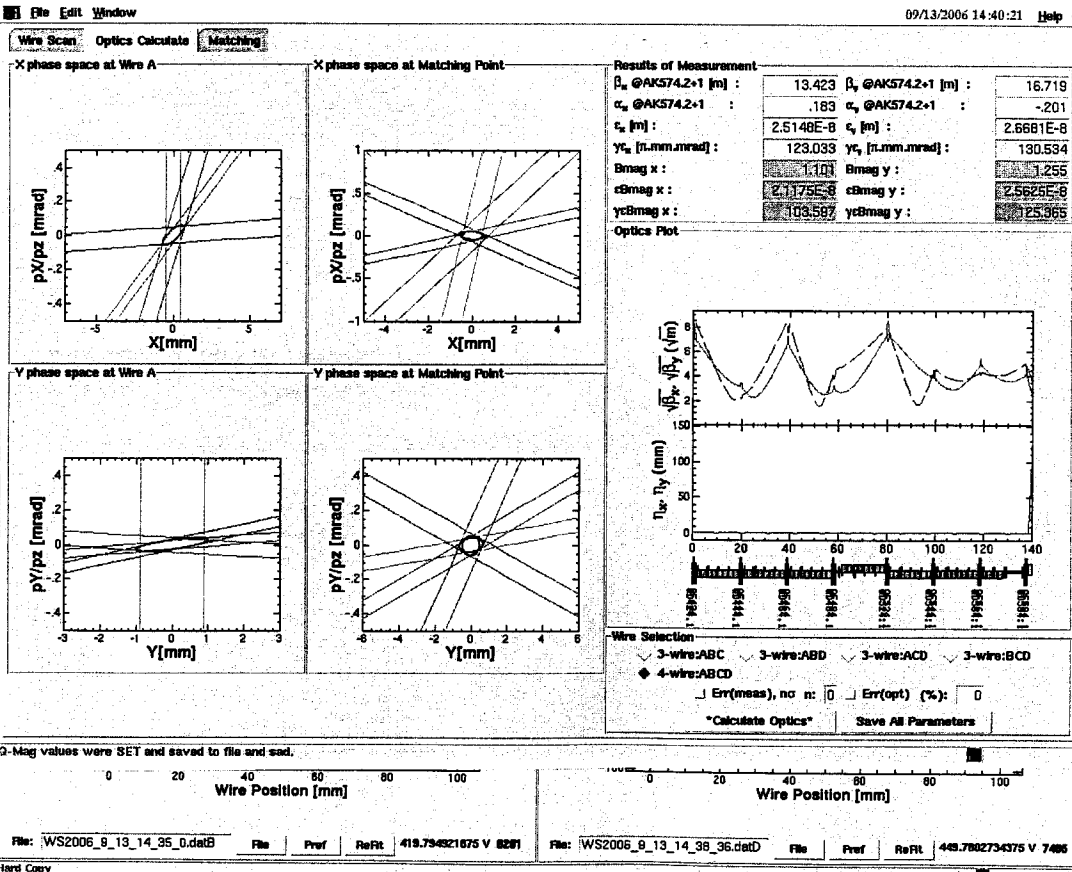
← set 後

軌道補正



Matching後

set



ここは Matching後

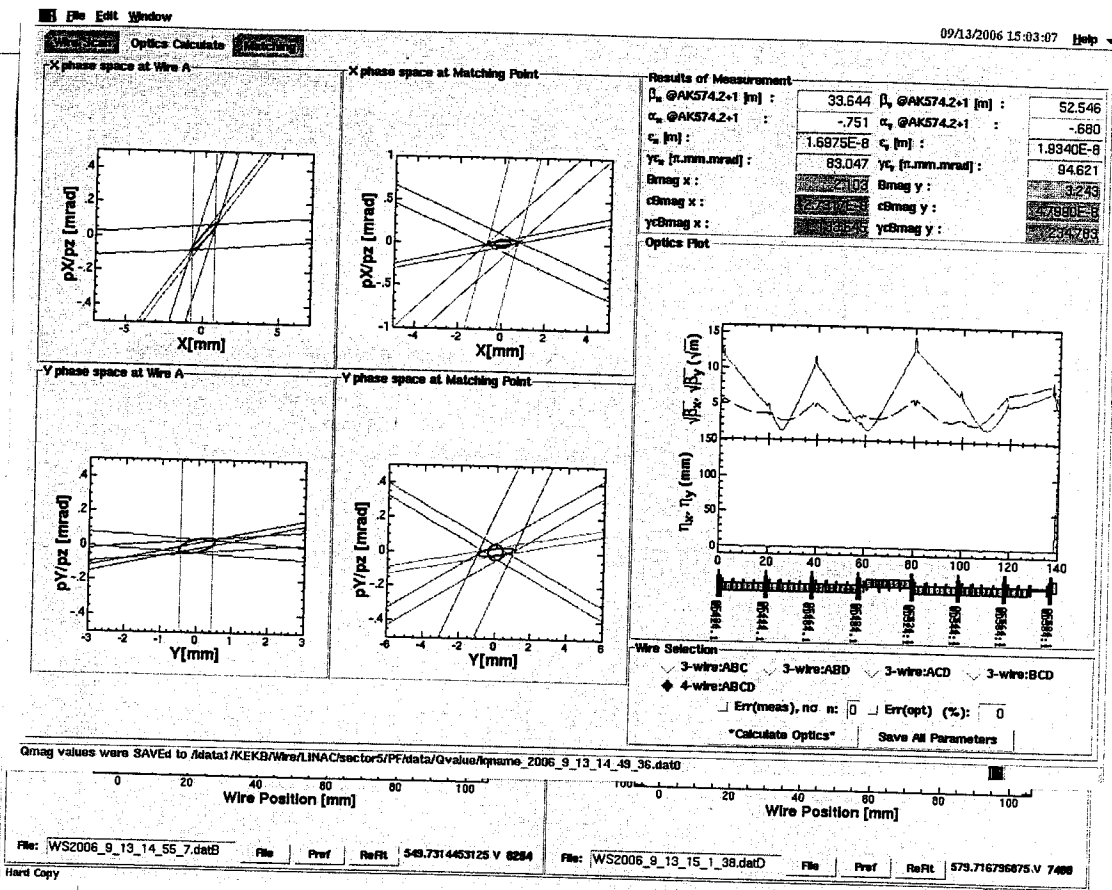
OKとする

磁場は

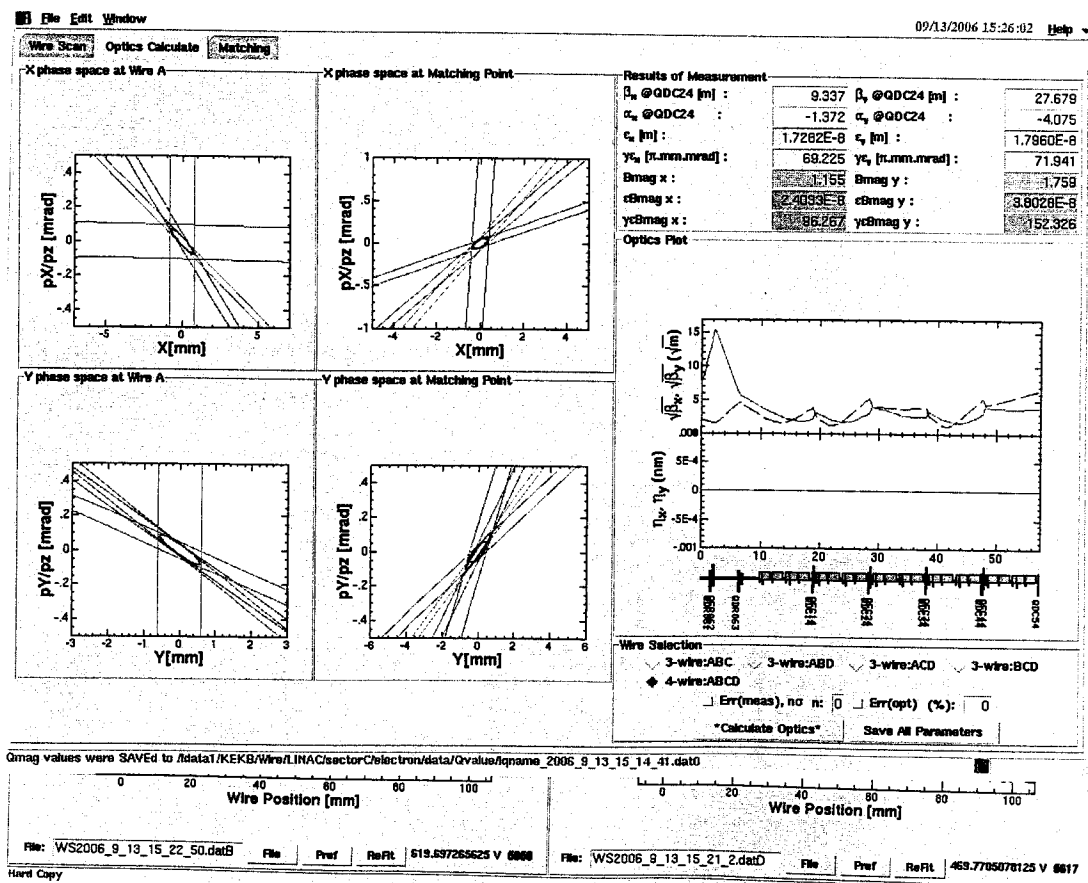
前頁より

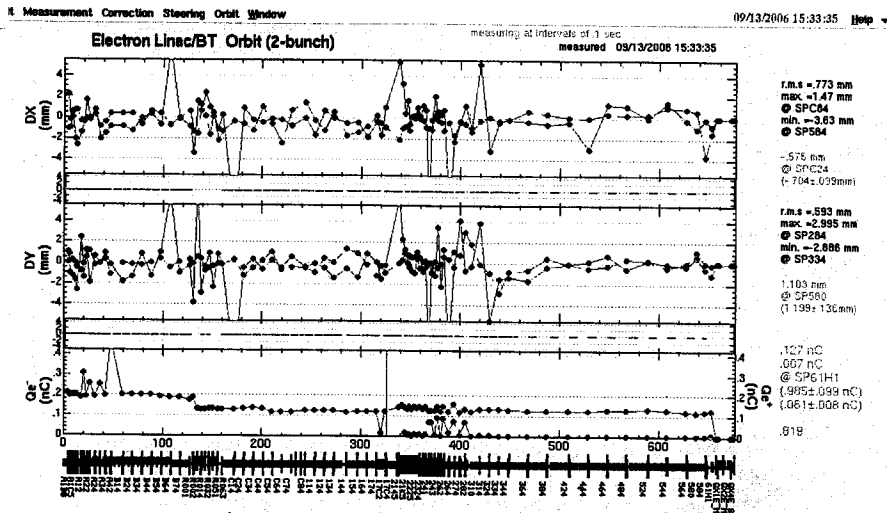
Energy S
軌道調整

← 1nC(2.50
i Matching
してあり



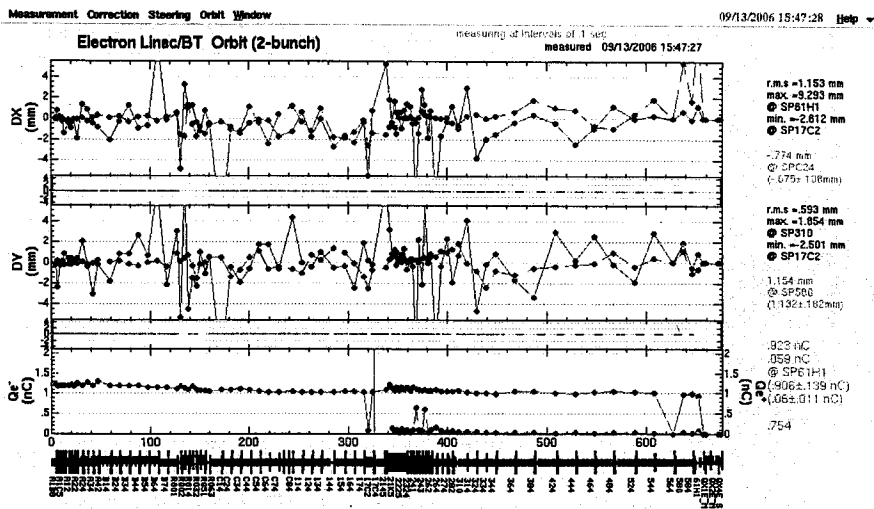
← 1nC(2.50
i Matching
してあり



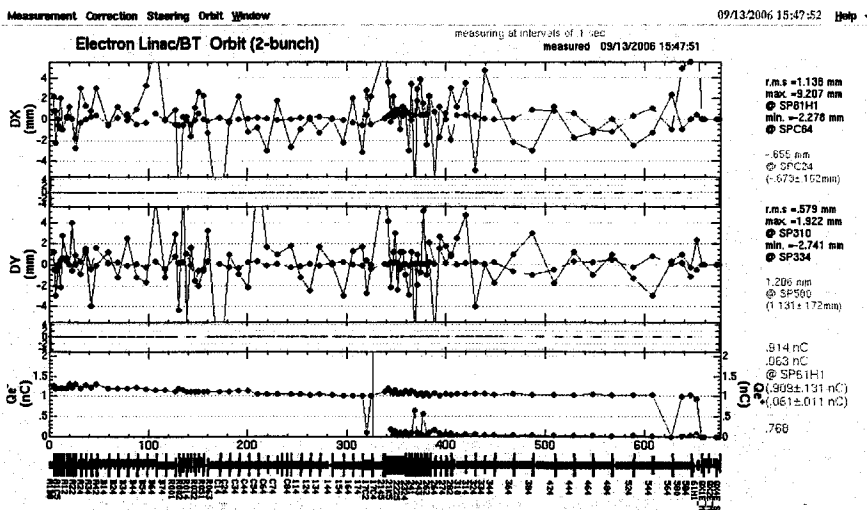


MultiOpt.
2.5 GeV
0.2 nC

軌道がわる



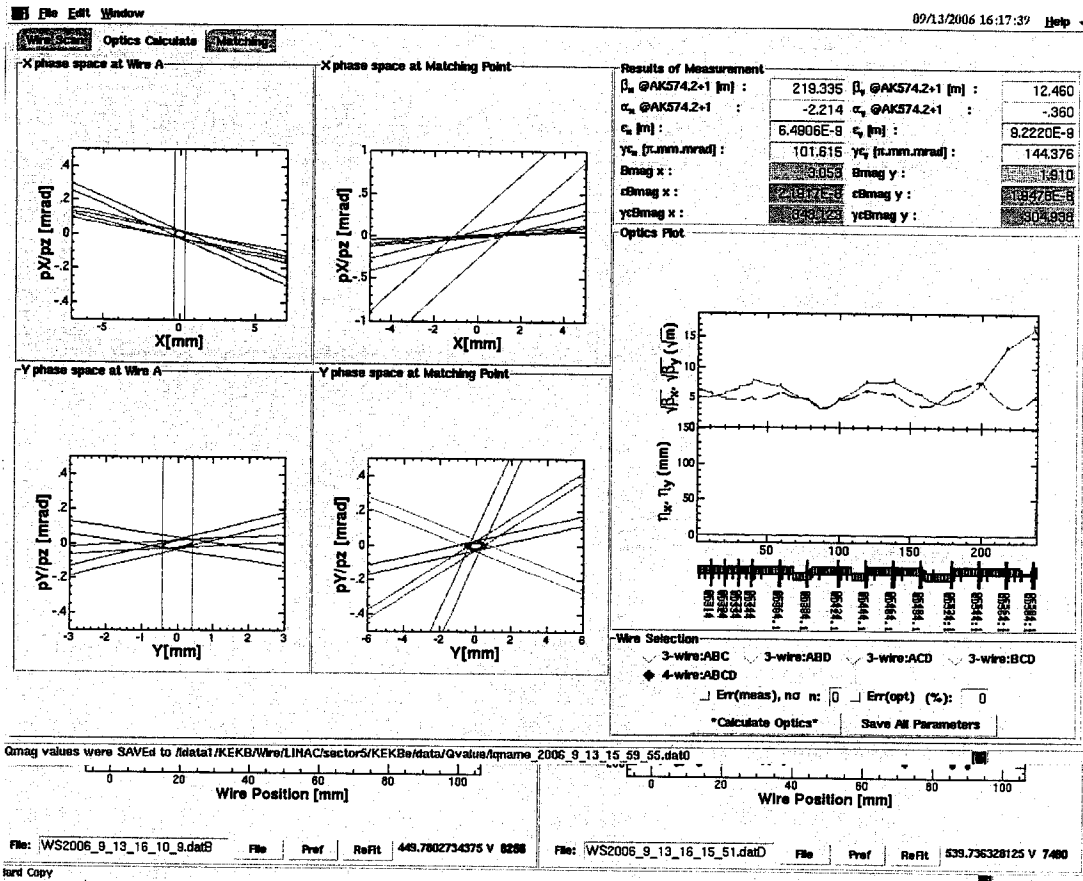
8 GeV
1 nC



8 GeV (7 nC)
-2.5 GeV (0.2 nC)

5077- 1nC Seet (Multi Opt.)

磁場
P191a
JF



C077- 1nC Seet (Multi Opt.)

